

# CLARKSVILLE CAMPUS

## Nashville State Community College

# Evacuation & Safe Areas

### Main Building Evacuation

➔ Follow arrows to nearest exit.

### Main Building Safe Areas

Take shelter in these areas:

- Men's Restroom. . . . . 144
- Women's Restroom. . . . . 145
- Men's Restroom. . . . . 153
- Classroom. . . . . 142
- Classroom. . . . . 137
- Corridor - Bottom of Stairs. . . . 161
- Conference Room. . . . . 152
- Storage. . . . . 157
- Faculty/Staff Lounge. . . . . 148
- Bursar Storage. . . . . 150

### Modular Building Evacuation

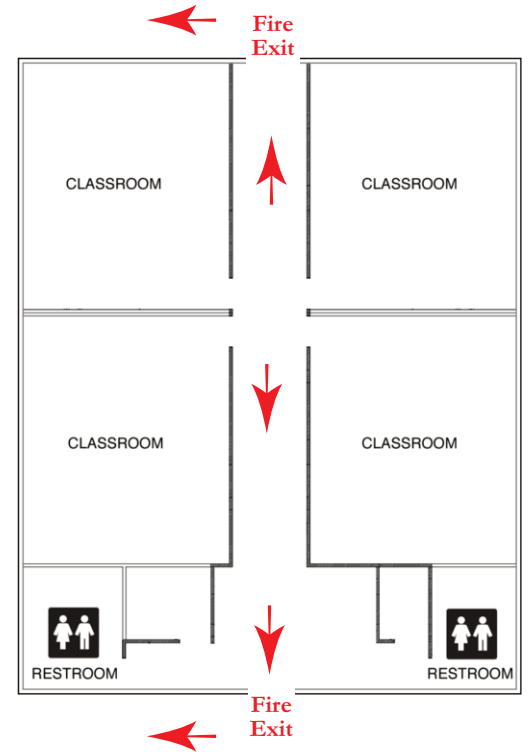
➔ Exit doors to the field next to the parking lot.

### Modular Building Safe Areas

There are no designated safe areas in the Modular Building. For severe weather, move to safe areas in the Main Building. Emergency Management recommends evacuating the Modular Building when a Tornado Watch is in effect for our area.

Campus Evacuation Map — Revised 8-16-18

NSCC 04-19 – NSCC is a TBR institution, AA/EEO employer, and does not discriminate against students, employees, or applicants for admission or employment on the basis of race, color, religion, creed, national origin, sex, sexual orientation, gender identity/expression, disability, age, status as a protected veteran, genetic information, or any other legally protected class with respect to all employment, programs and activities sponsored by NSCC. Inquiries regarding non-discrimination policies: Human Resources, HumanResources@nsc.edu, 120 White Bridge Rd, 615-353-3305. The Nashville State policy on nondiscrimination can be found at www.nsc.edu/legal/non-discrimination-policy. Printer: NSCC Copy Shop • 120 White Bridge Rd, Nashville, TN 37209 • Qty: 2,500 • © 2018, NSCC.



**Modular Building**

## Main Building

