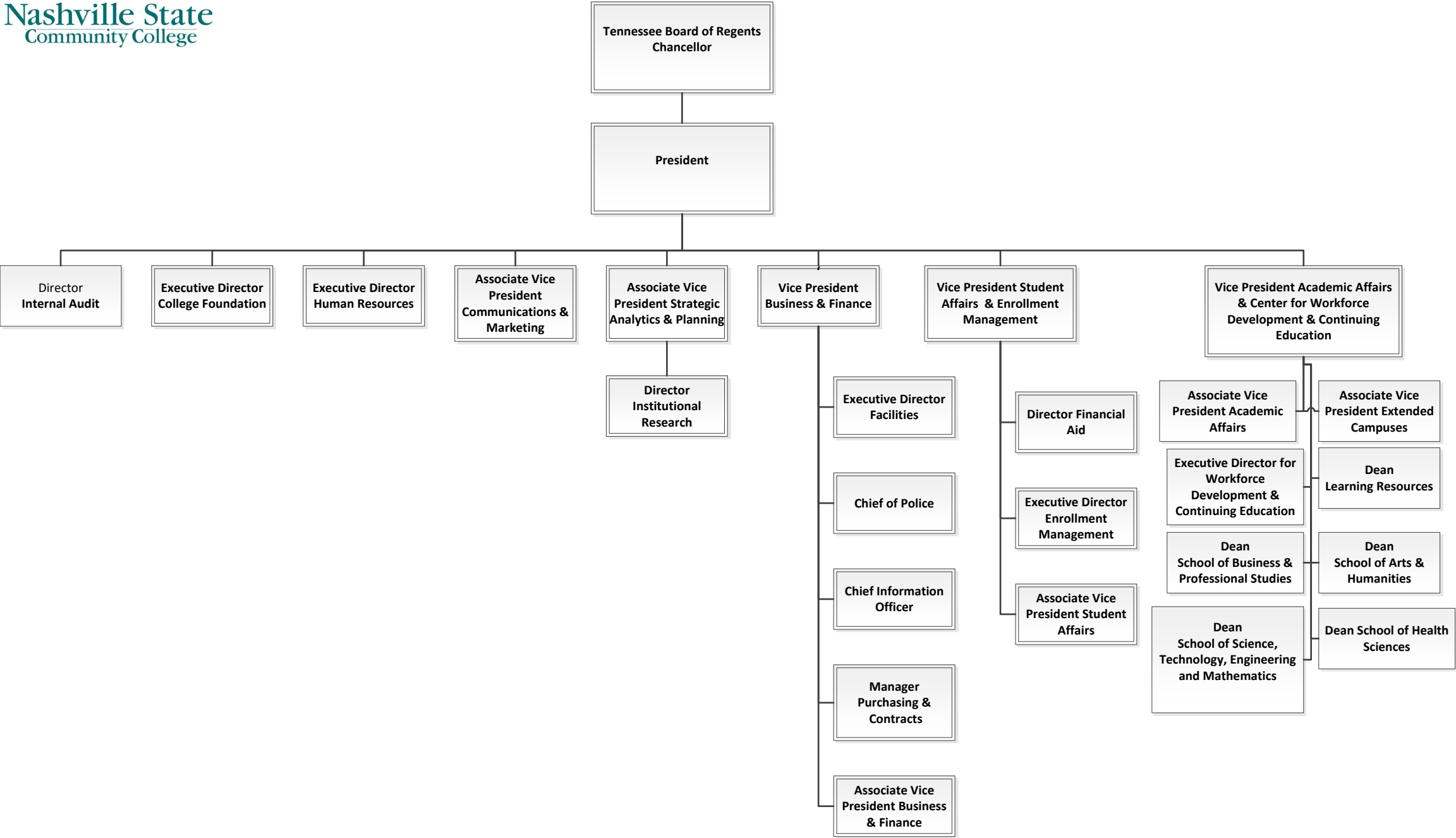


**NASHVILLE STATE COMMUNITY COLLEGE
ORGANIZATIONAL CHART**



PRESIDENT

President's Office

Office of the President

Office of Internal Audit

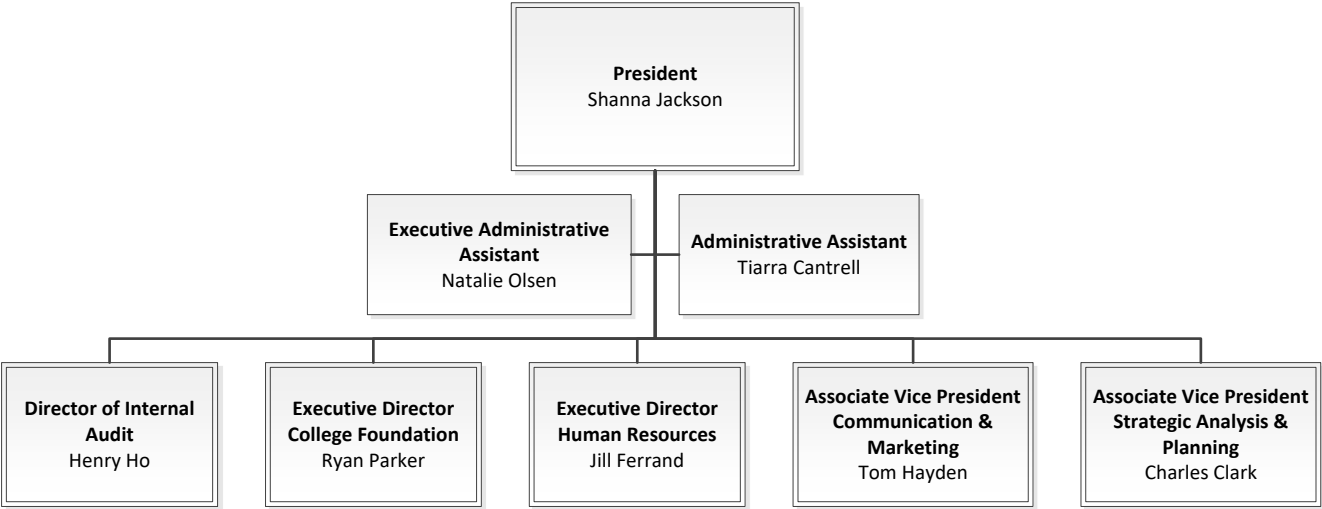
College Foundation

Office of Human Resources

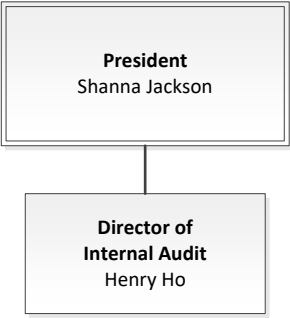
Office of Communication & Marketing

Office of Strategic Analytics & Planning

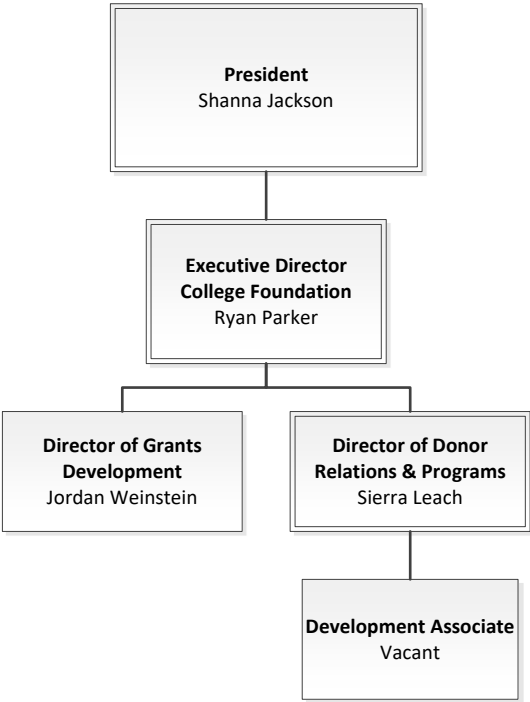
Office of the President



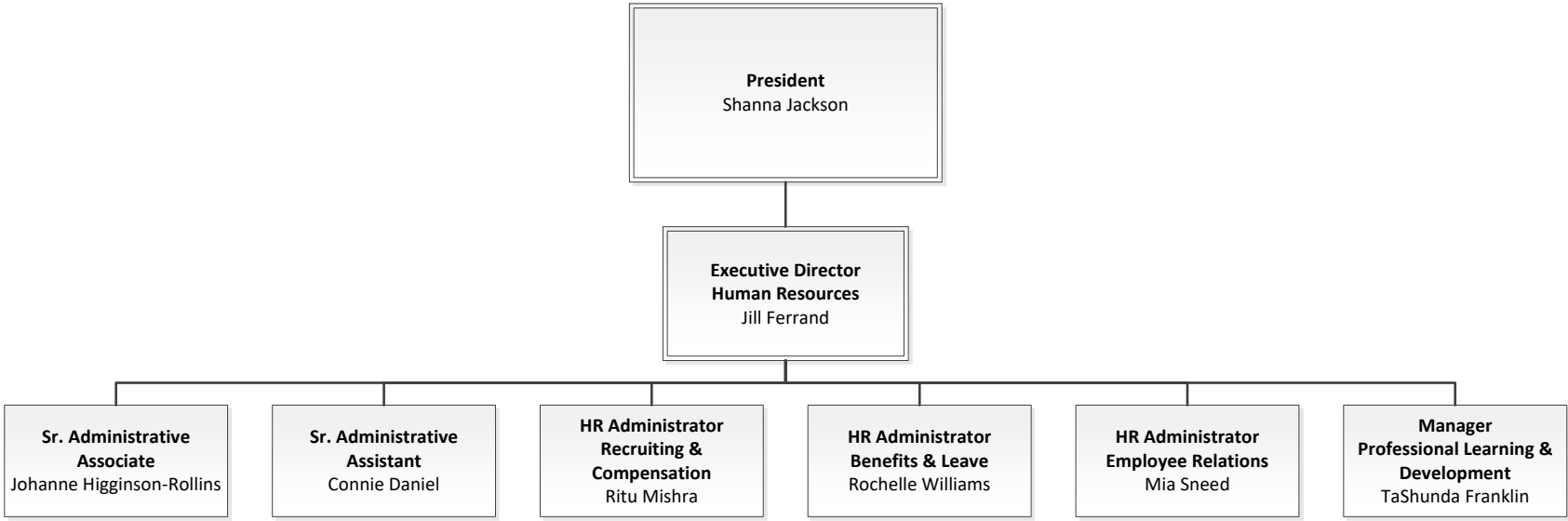
Office of Internal Audit



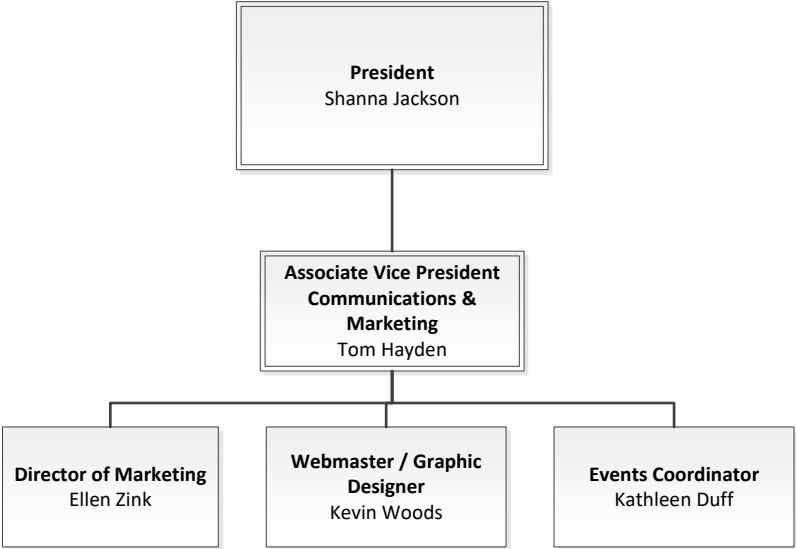
College Foundation



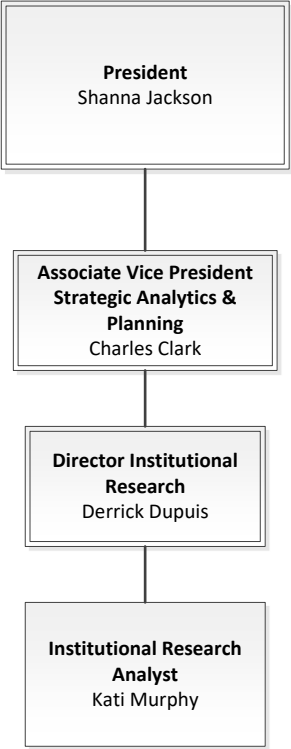
Office of Human Resources



Office of Communications & Marketing



Office of Strategic Analytics & Planning



Vice President of Business and Finance

Vice President of Business & Finance

Office of the Vice President of Business & Finance

Office of Facilities Management

Office of Police and Security

Office of Technology Services

Office of Purchasing & Contracts

Office of the Associate Vice President of Business and Finance

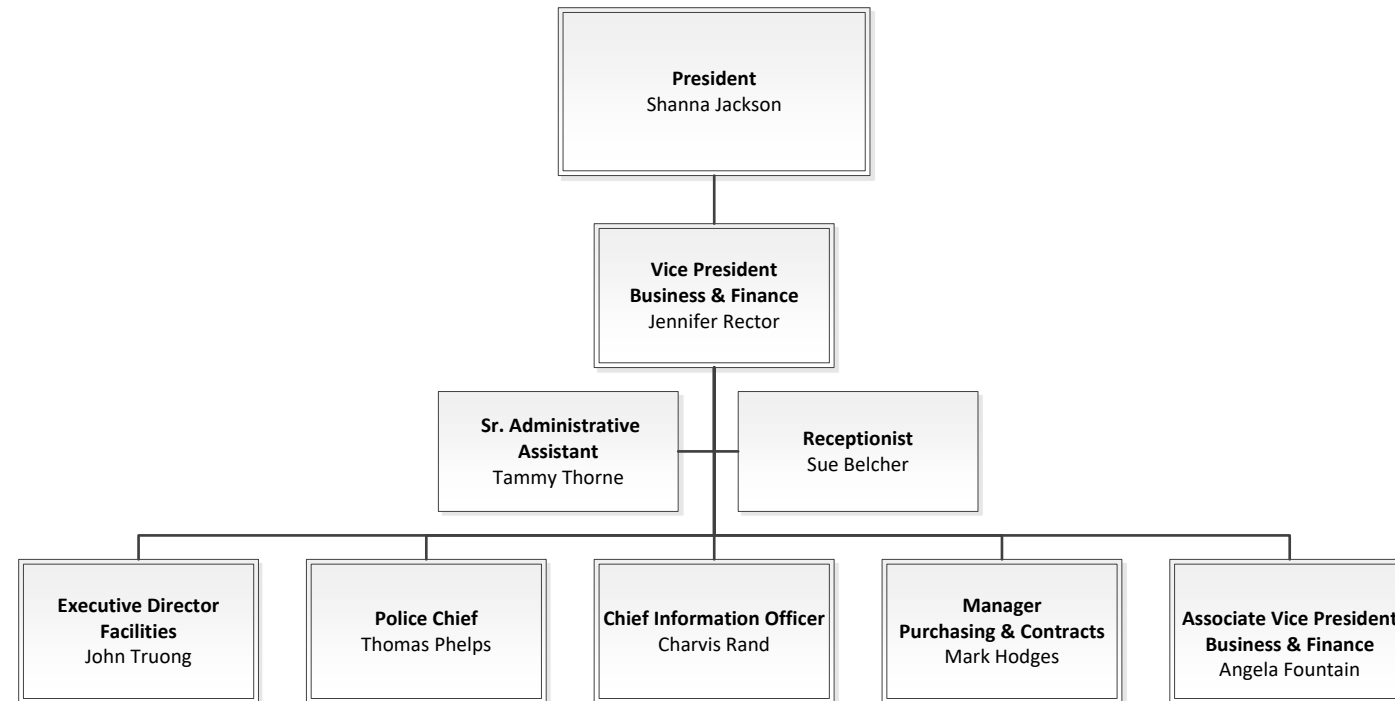
Office of Accounting & External Reporting

Office of Payroll

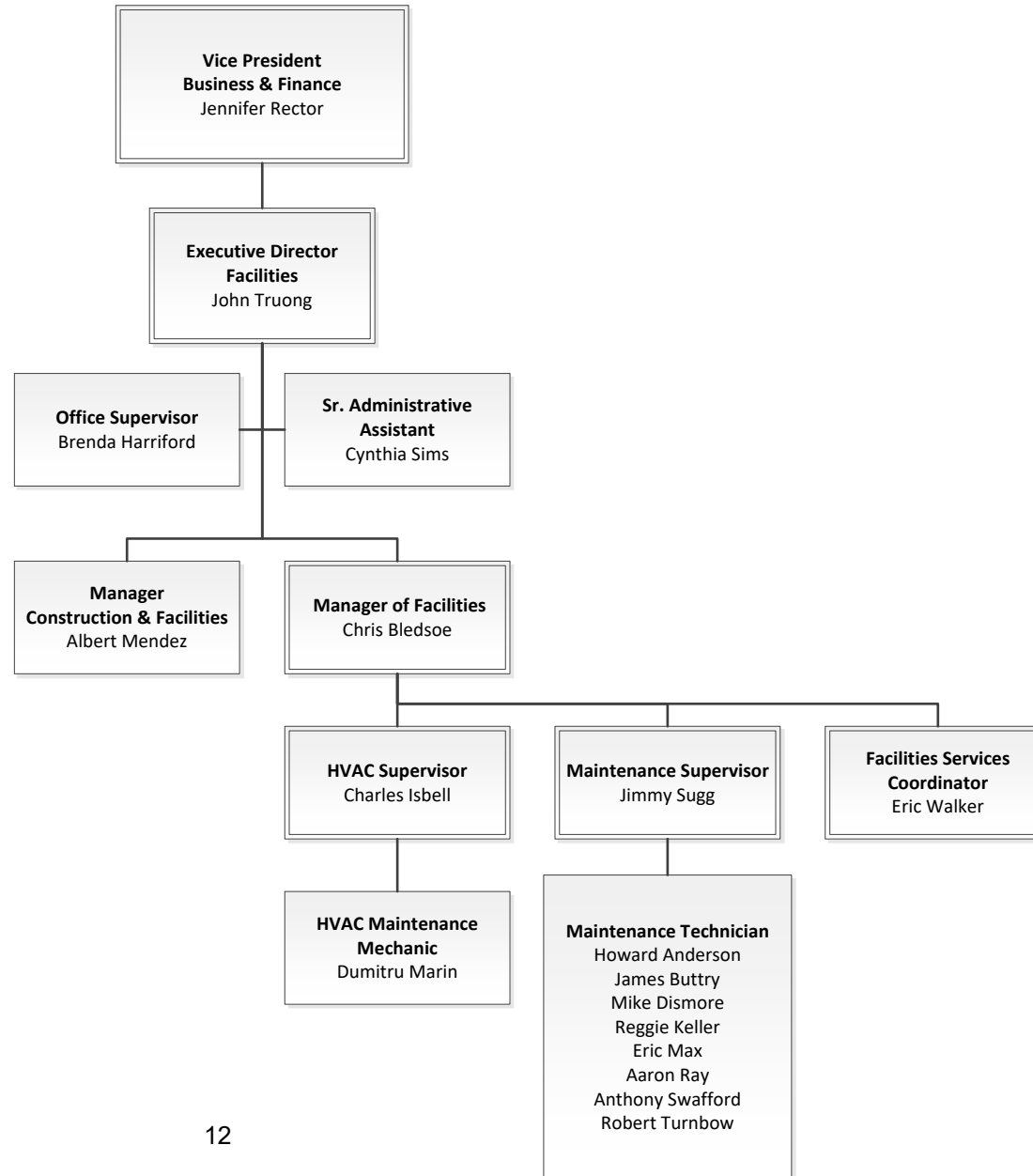
Office of Budget & Travel

Office of Student Billing & Account Services

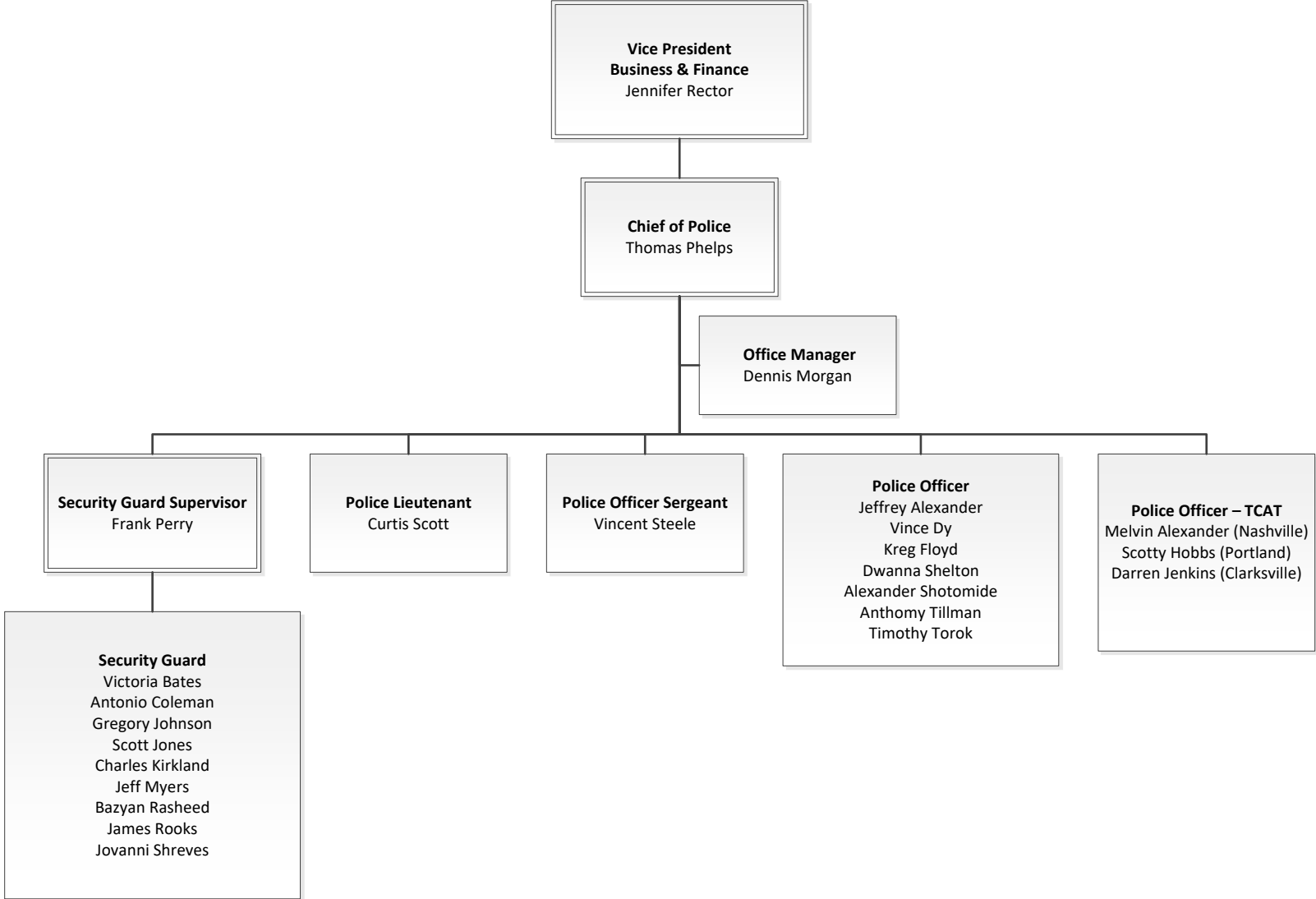
Office of the Vice President of Business & Finance



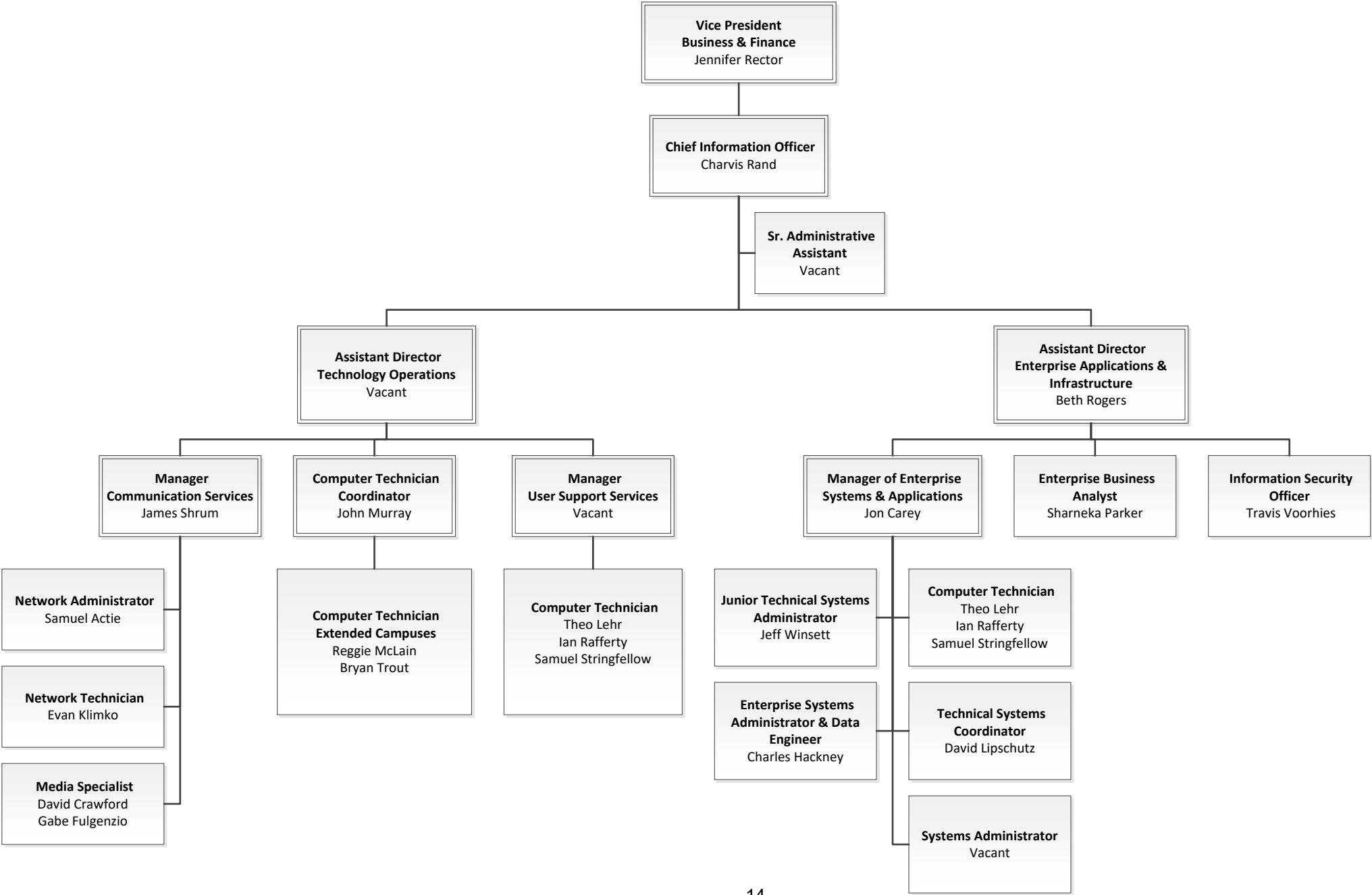
Office of Facilities Management



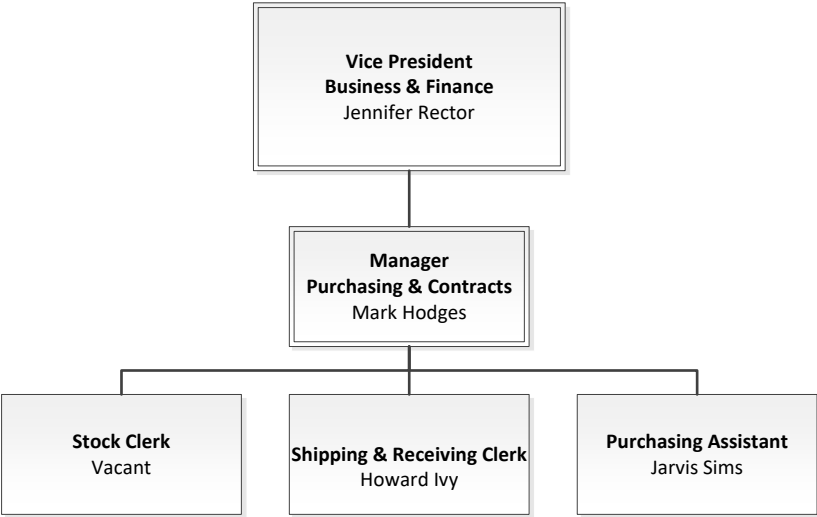
Office of Police & Security



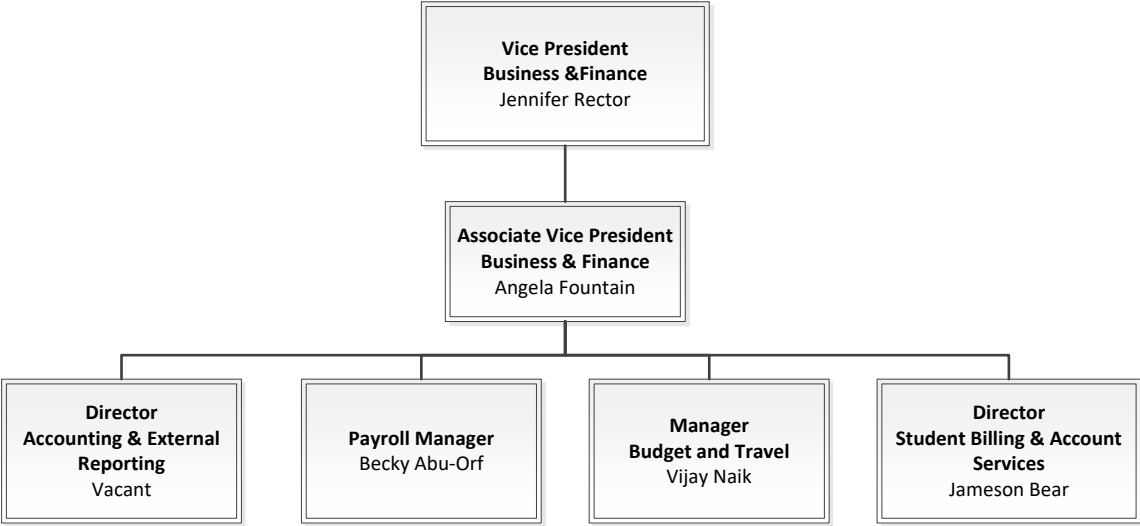
Office of Technology Services



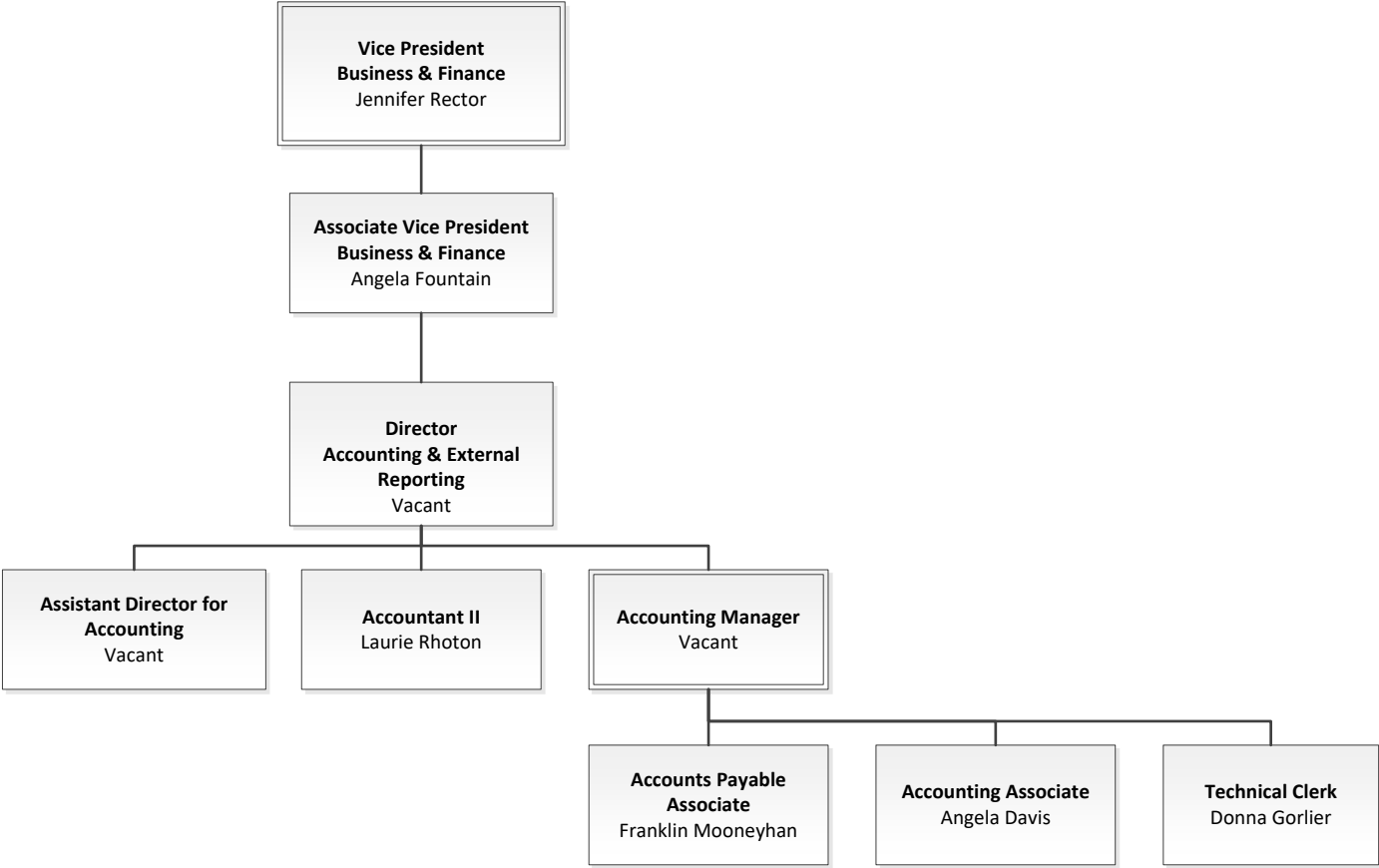
Office of Purchasing & Contracts



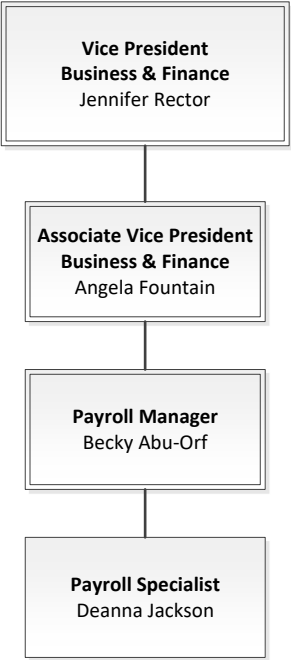
Office of the Associate Vice President of Business & Finance



Office of Accounting & External Reporting



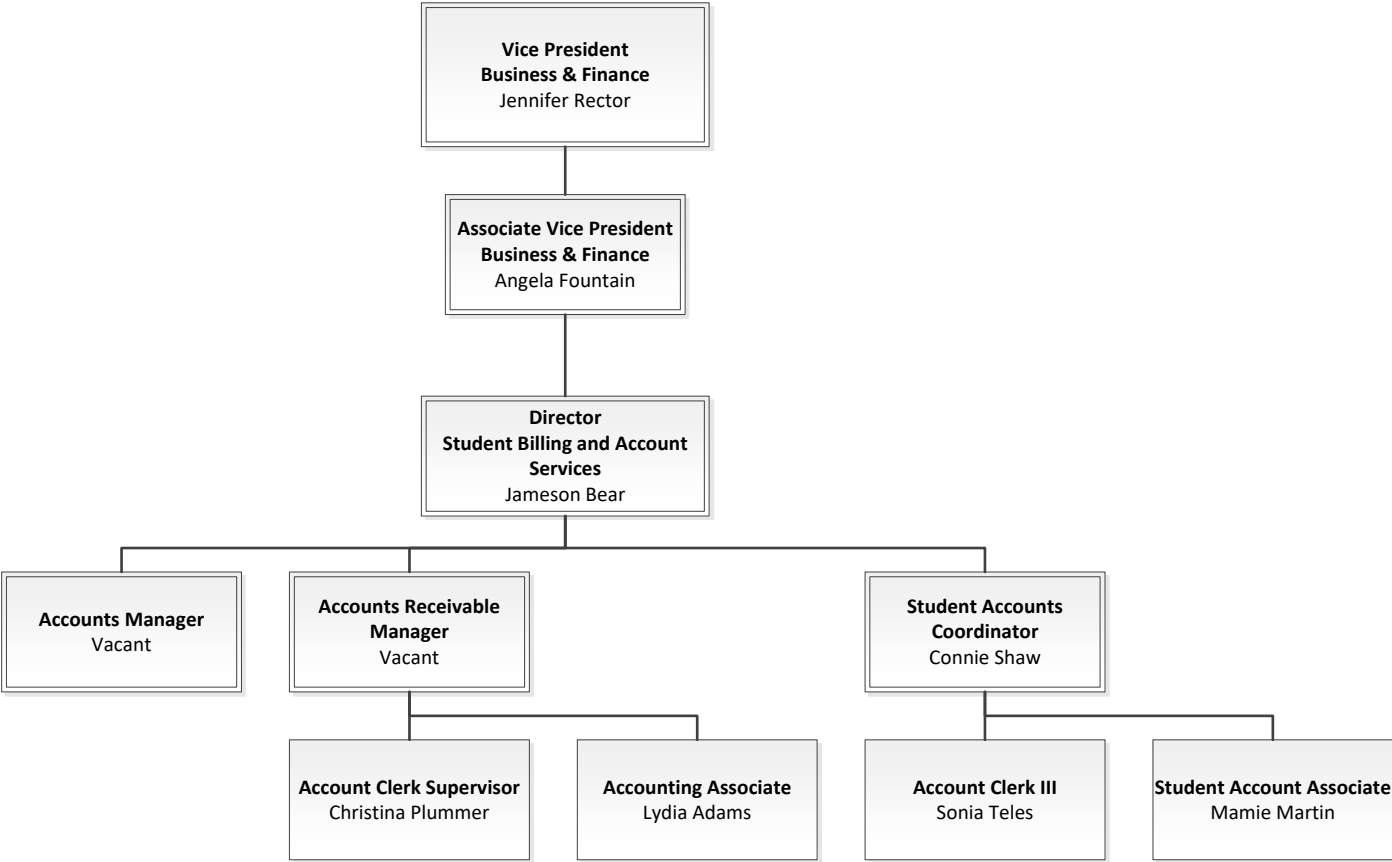
Office of Payroll



Office of Budget & Travel



Office of Student Billing & Account Services



Vice President of Student Affairs & Enrollment Management

Vice President of Student Affairs & Enrollment Management

Office of the Vice President of Student Affairs and Enrollment Management

Office of Financial Aid

Office of Enrollment Services

- Office of Admissions & Records
- Office of the Welcome Center
- Office of the Testing Center

Office of the Associate Vice President of Student Affairs

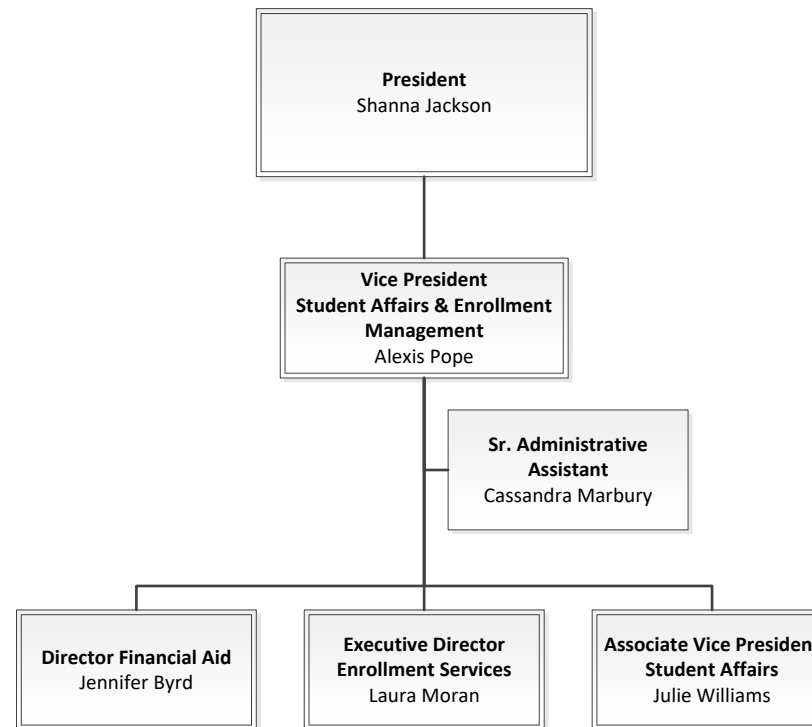
Office of the Student Success Center

Office of Career and Transfer Center

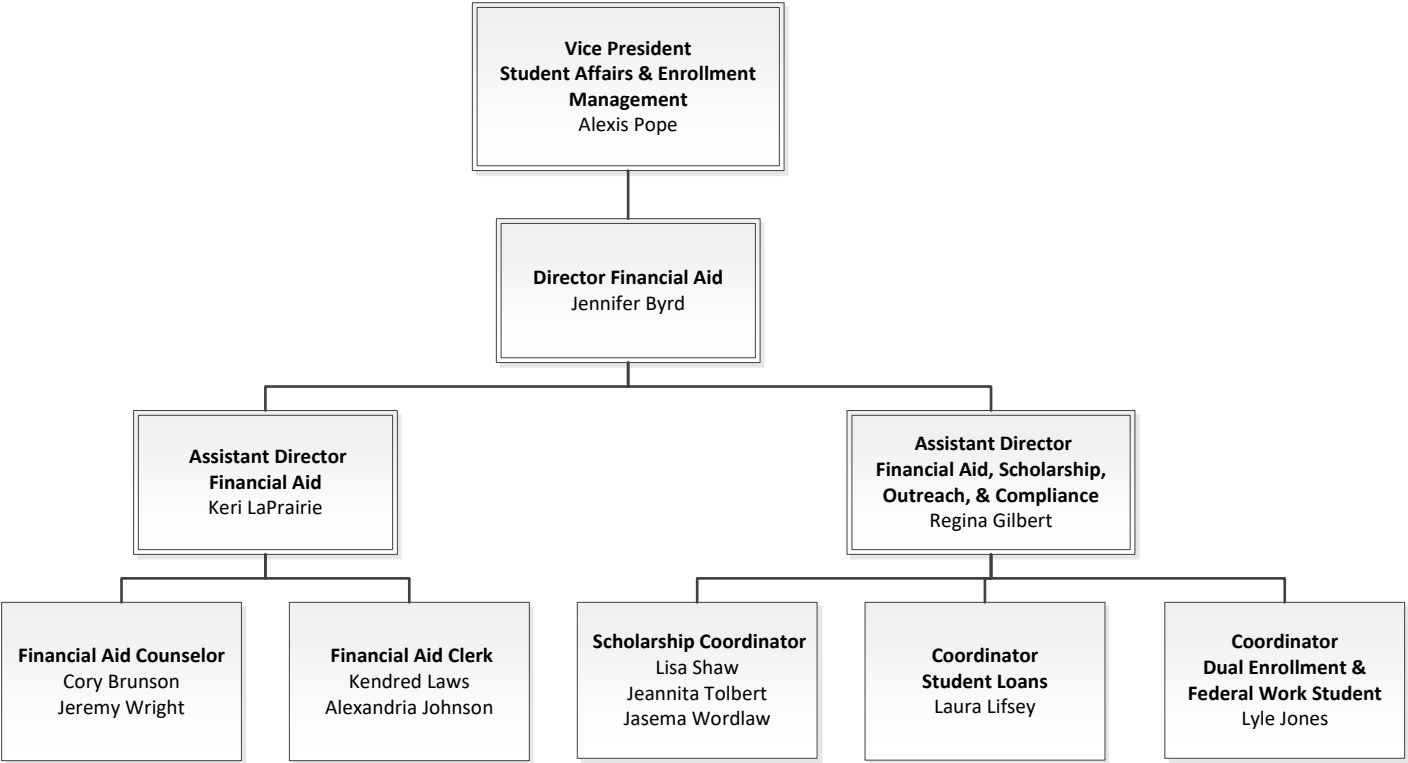
Office of the Access Center

Office of Student Life

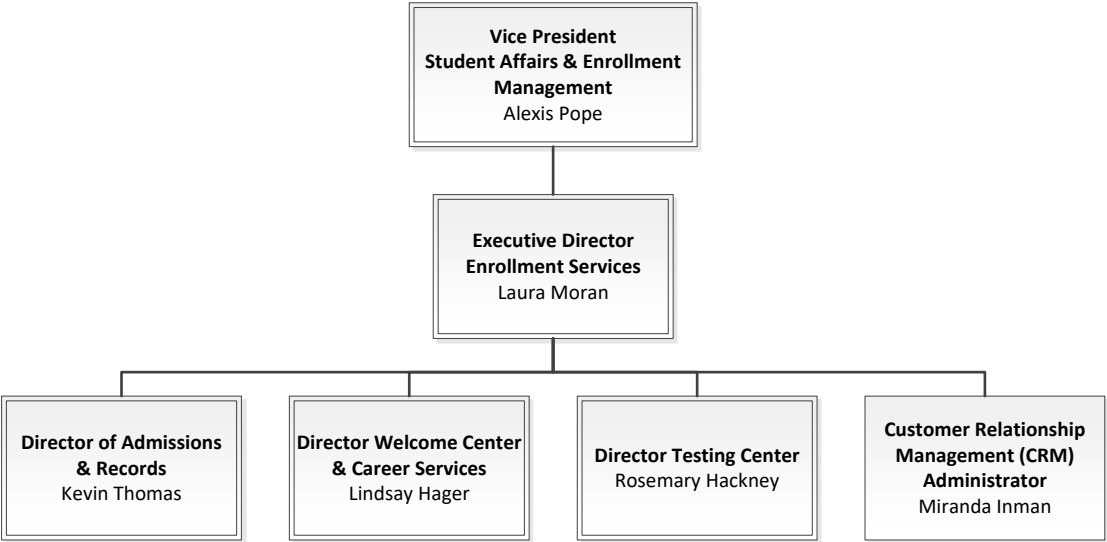
Office of the Vice President of Student Affairs & Enrollment Management



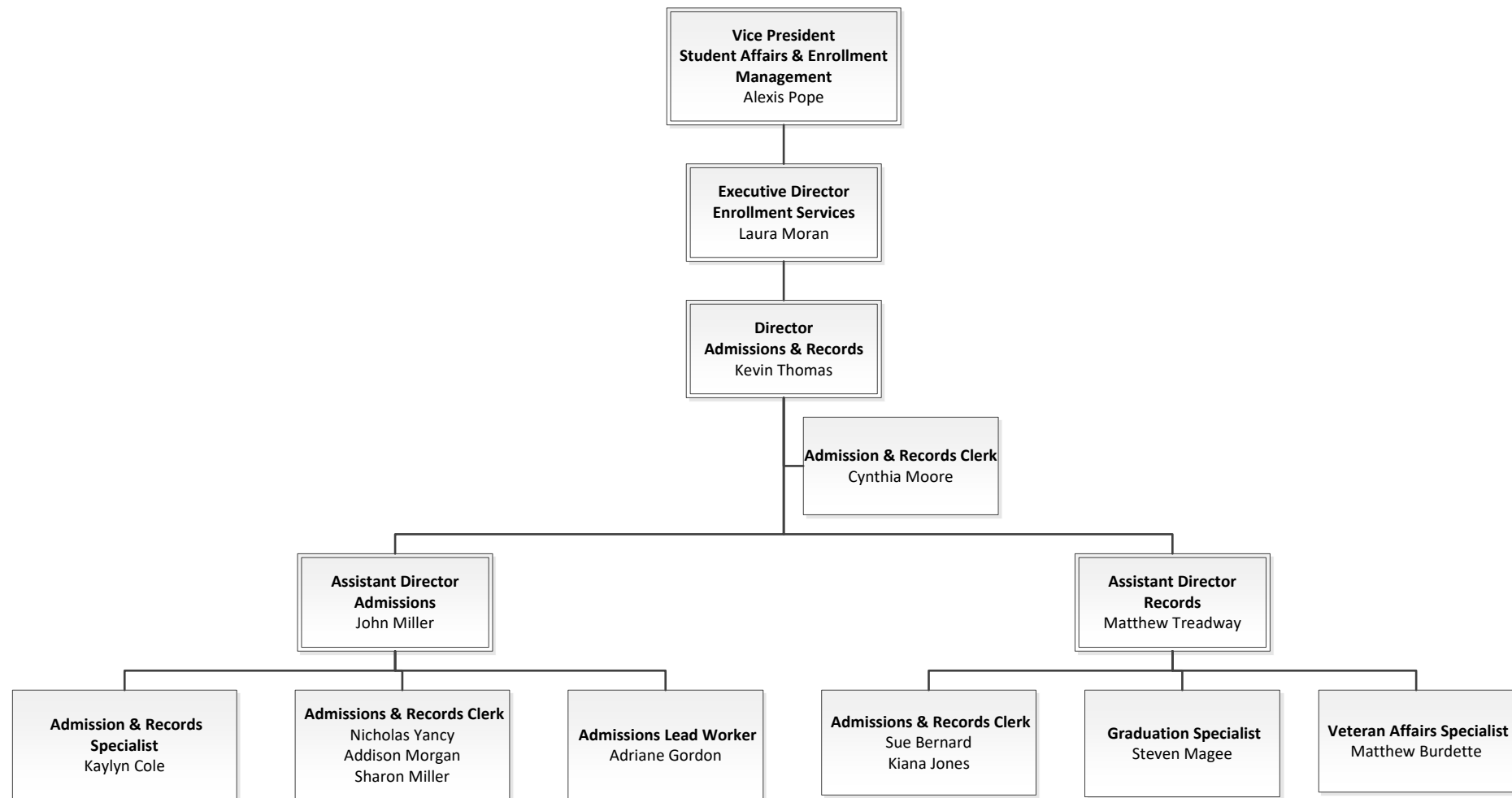
Office of Financial Aid



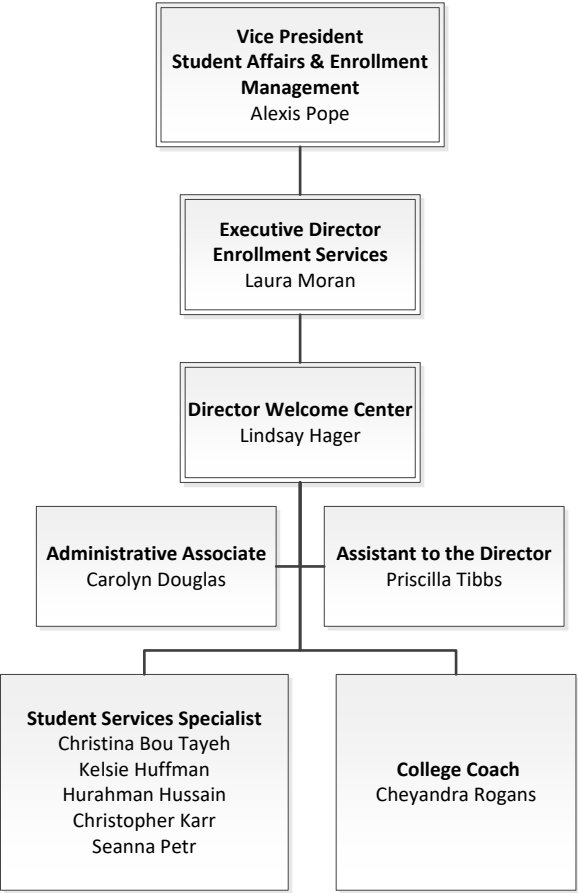
Office of Enrollment Services



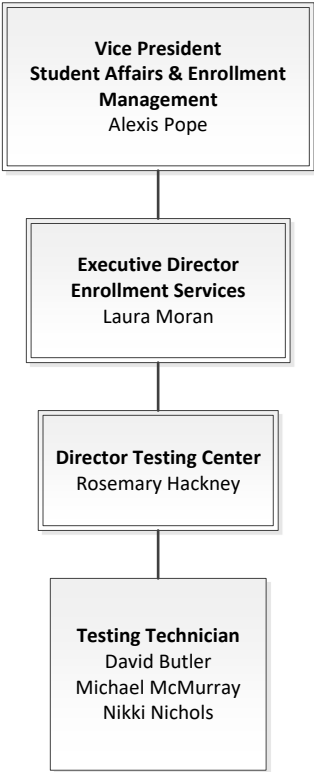
Office of Admissions & Records



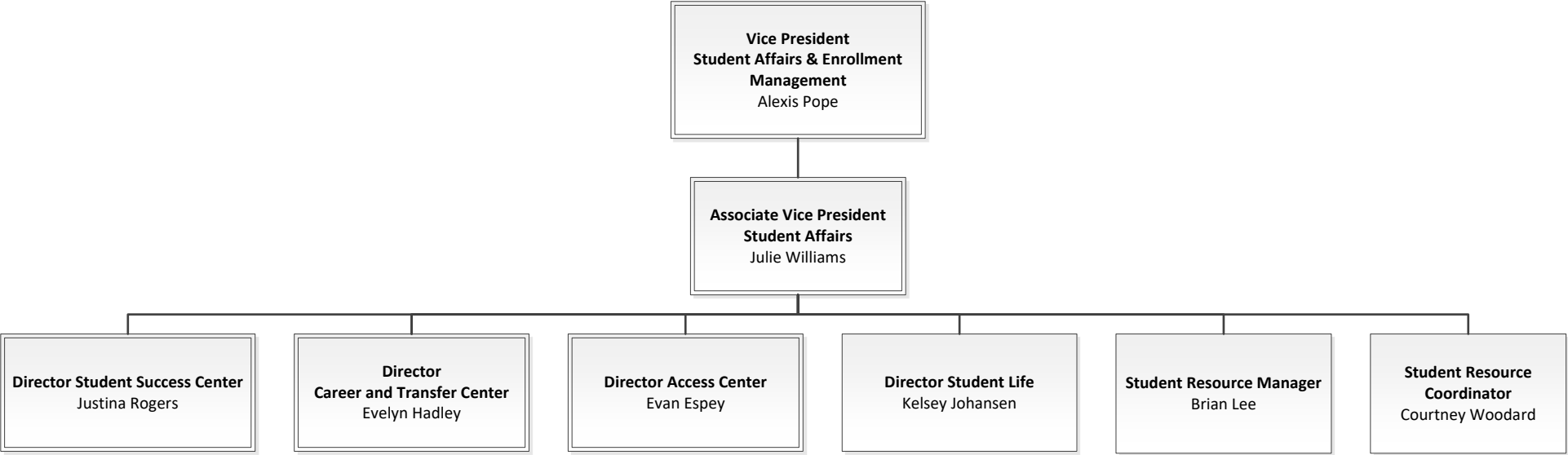
Office of the Welcome Center



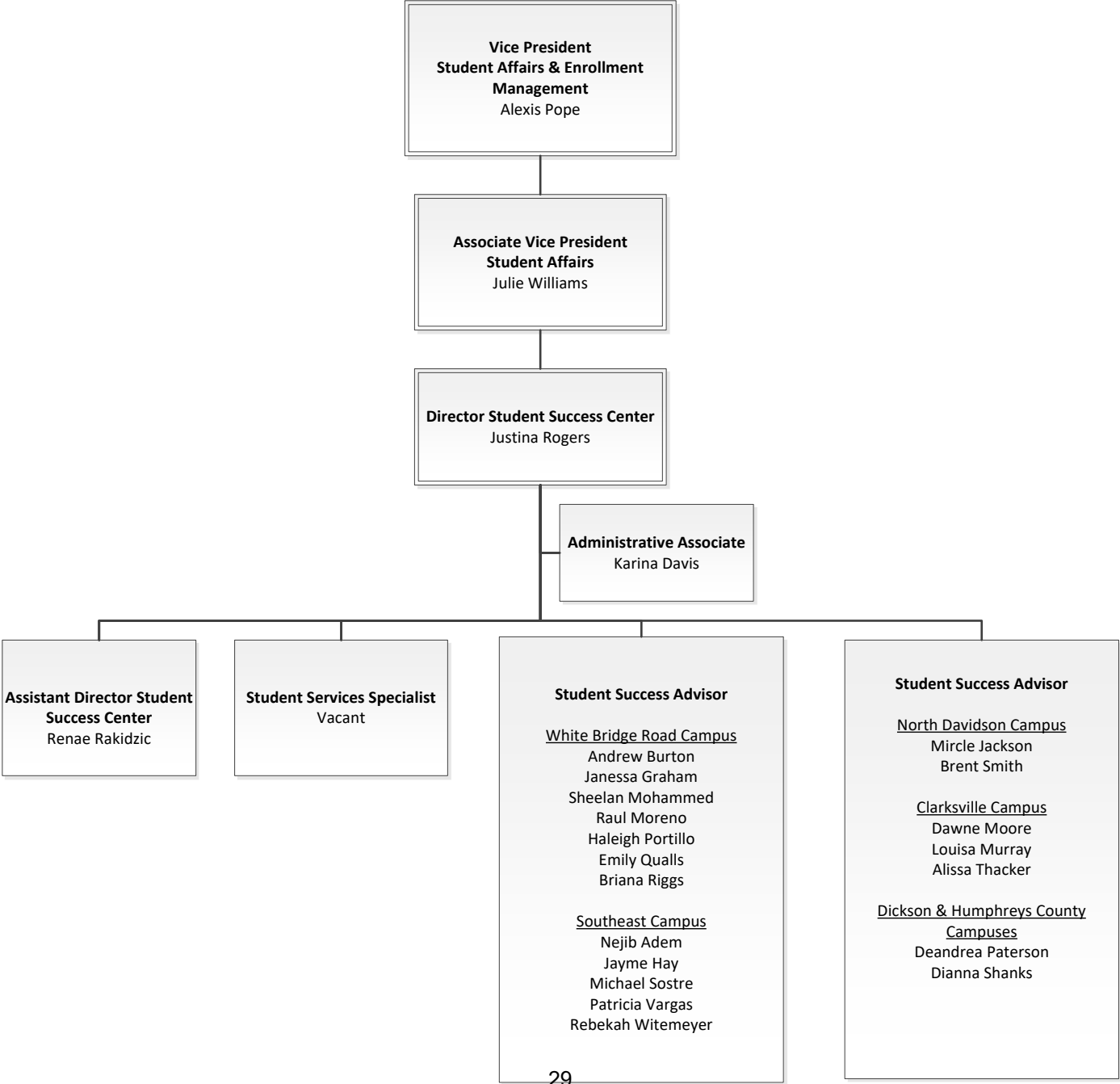
Office of the Testing Center



Office of the Associate Vice President of Student Affairs

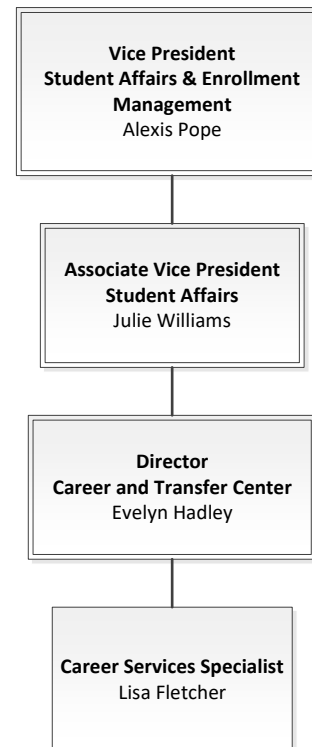


Office of the Student Success Center

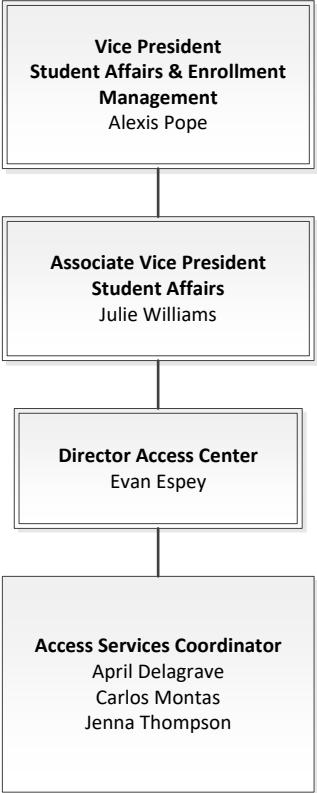


Office of the Associate Vice President of Student Affairs

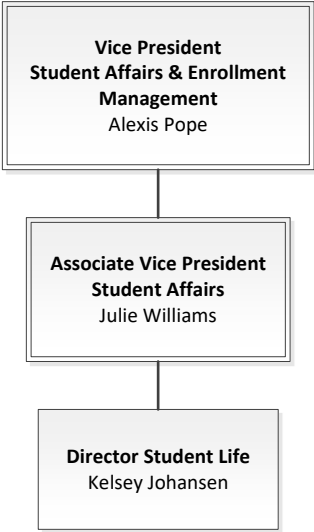
Office of the Career and Transfer Center



Office of the Access Center



Office of Student Life



Vice President of Academic Affairs

Vice President for Academic Affairs & Workforce Development/Continuing Education

Office of the Vice President of Academic Affairs

Office of the Associate Vice President Academic Affairs

- Office of Online Learning and Teaching Innovation

Office of the Center for Workforce Development and Continuing Education

Office of Learning Resources

School of Arts and Humanities

School of Business and Professional Studies

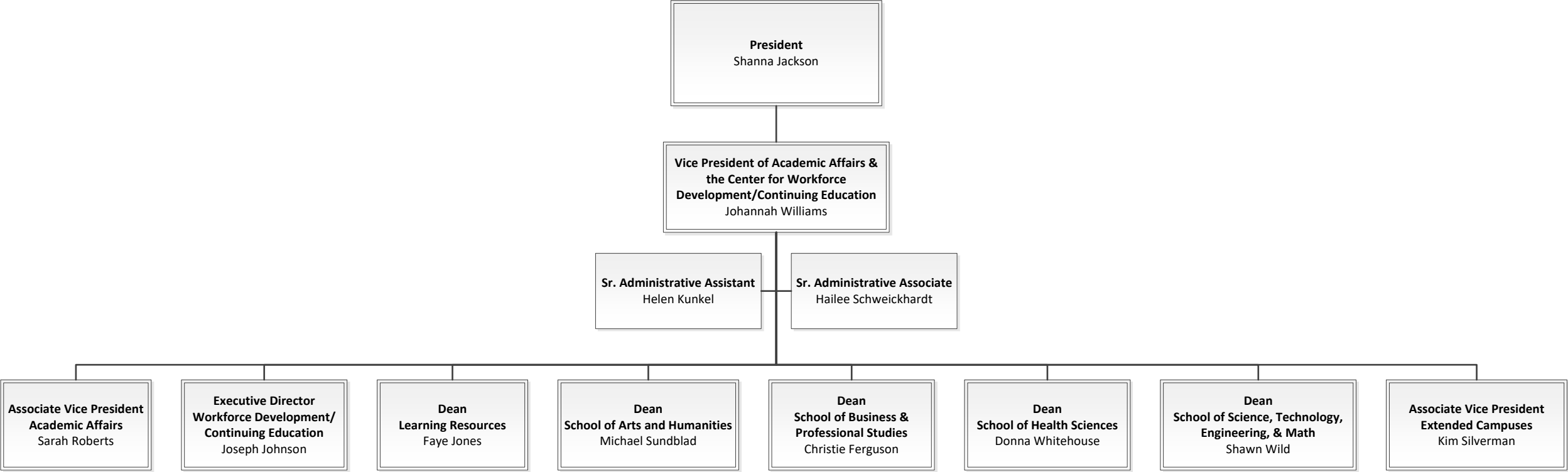
School of Health Sciences

School of Science, Technology, Engineering and Mathematics

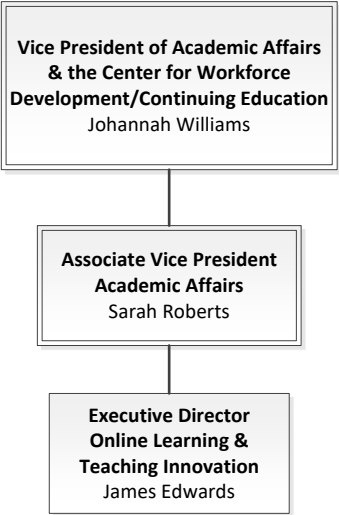
Office of the Associate Vice President Extended Campuses

- Office of High School Initiatives & Dual Enrollment
- Clarksville Campus
- Dickson Campus
- Humphreys County Campus
- North Davidson Campus
- Southeast Campus

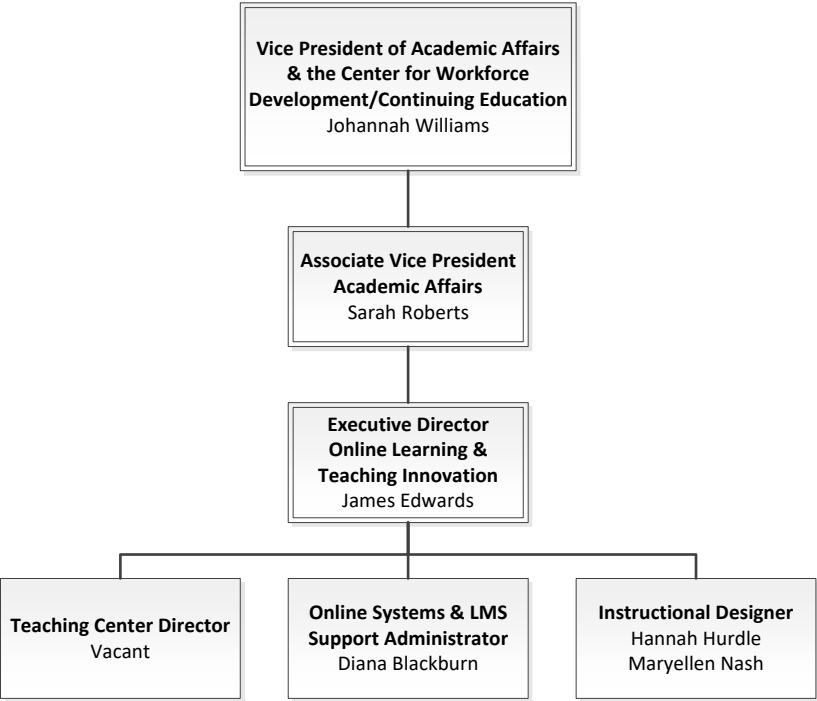
Office of the Vice President of Academic Affairs



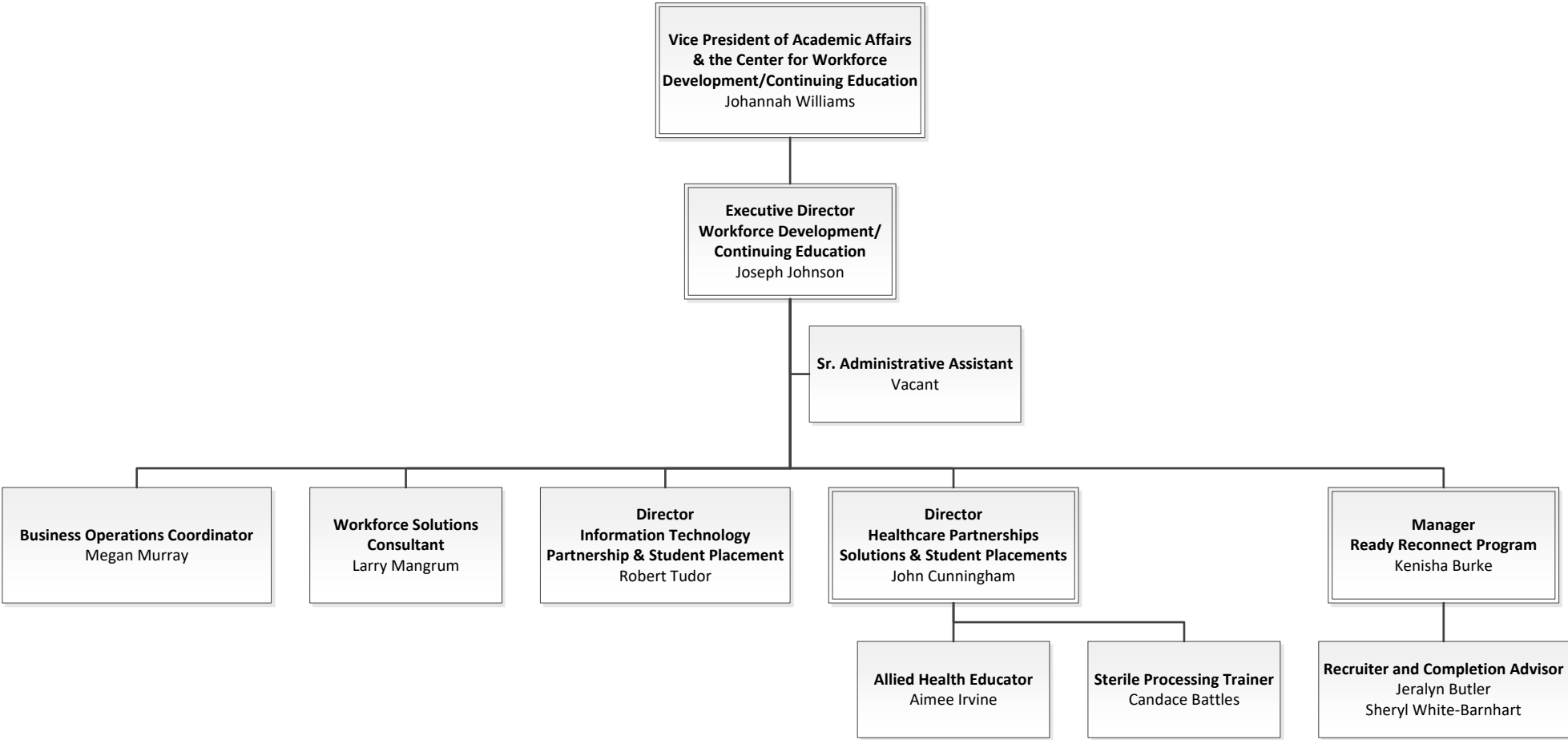
Office of the Associate Vice President of Academic Affairs



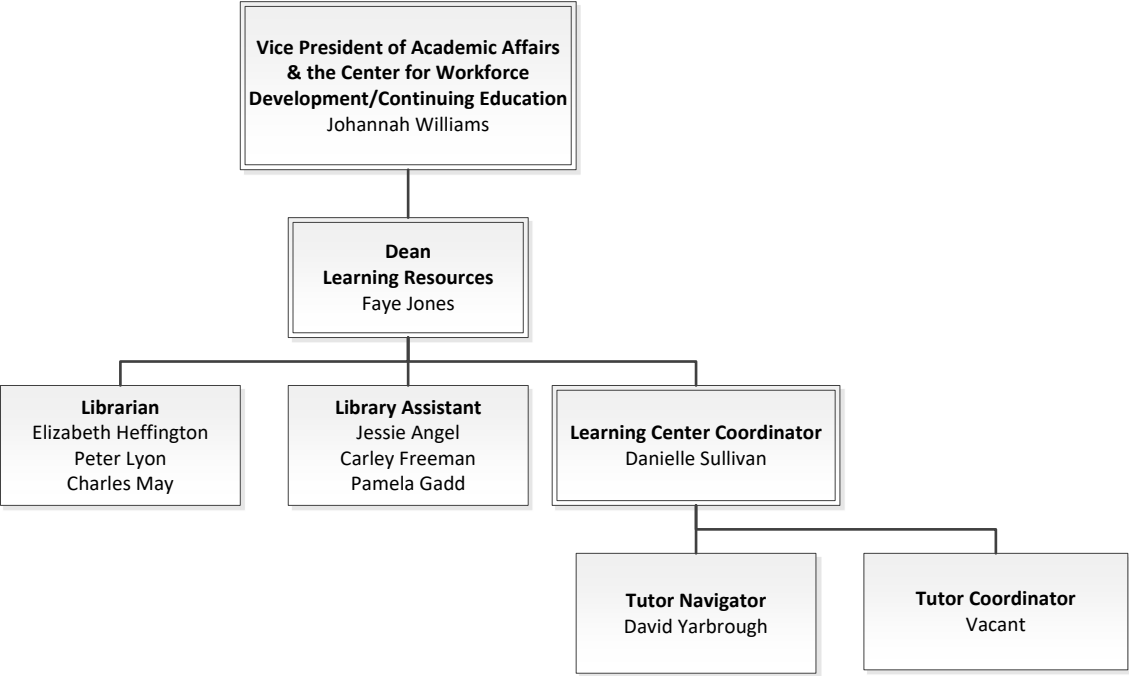
Office of Online Learning and Teaching Innovation



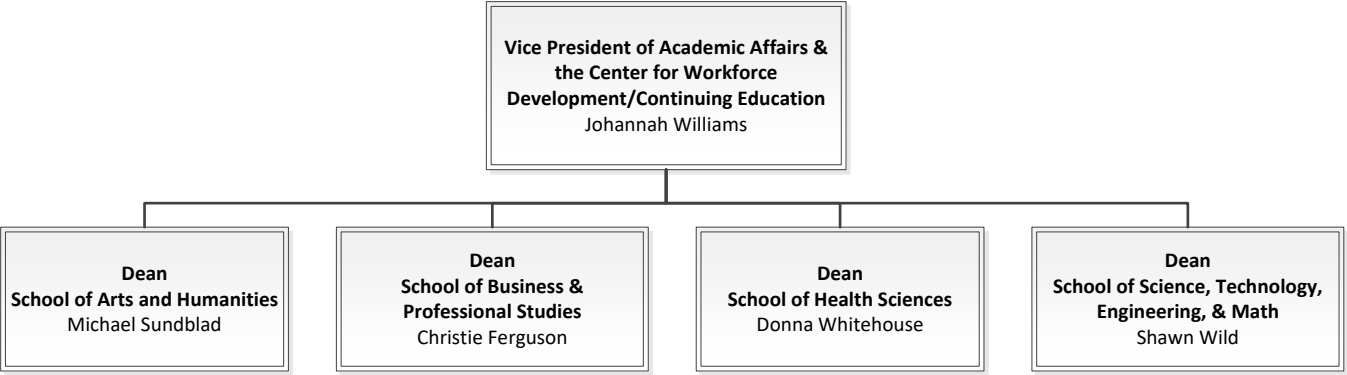
Office of the Center for Workforce Development & Continuing Education



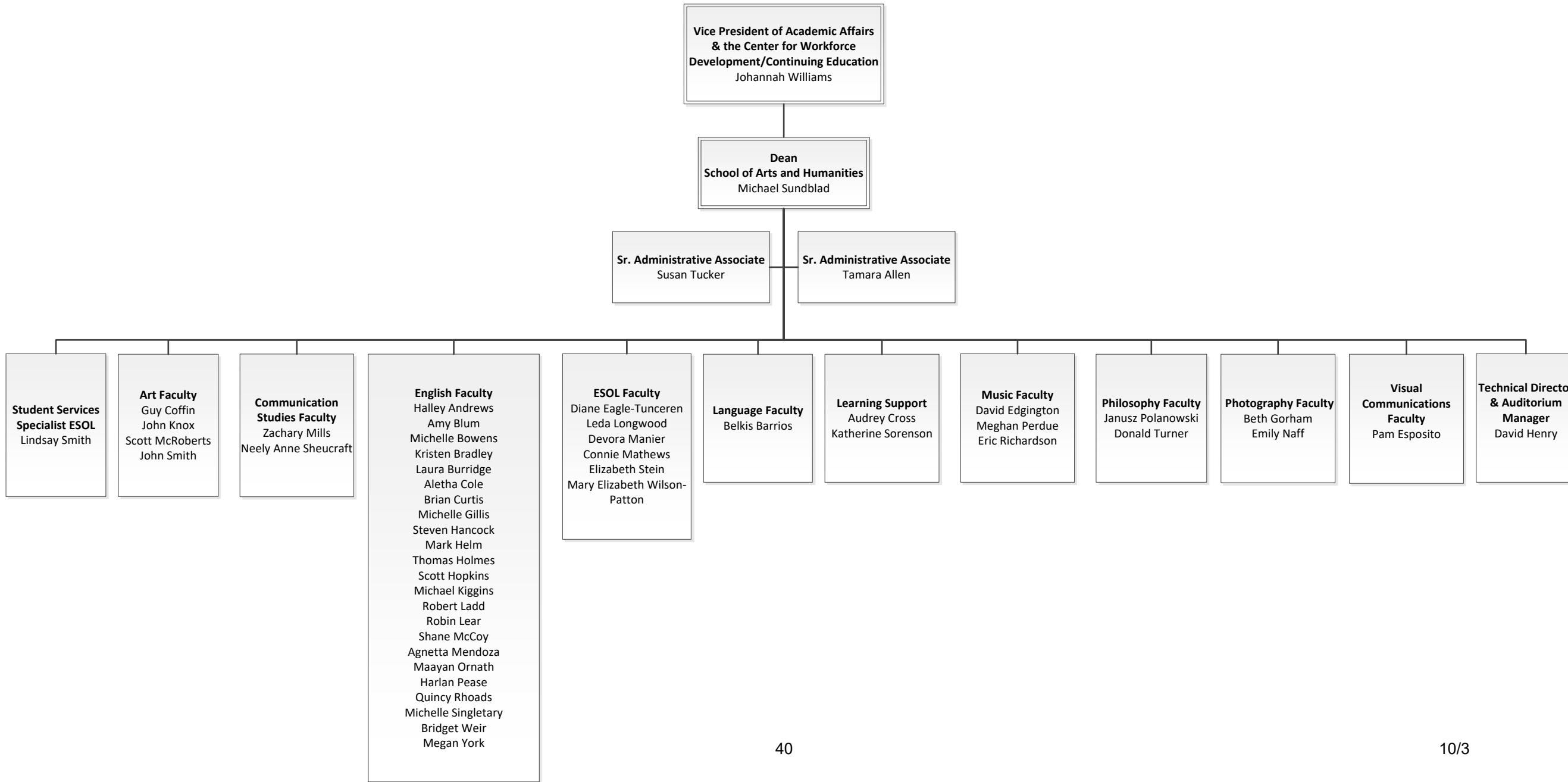
Office of Learning Resources



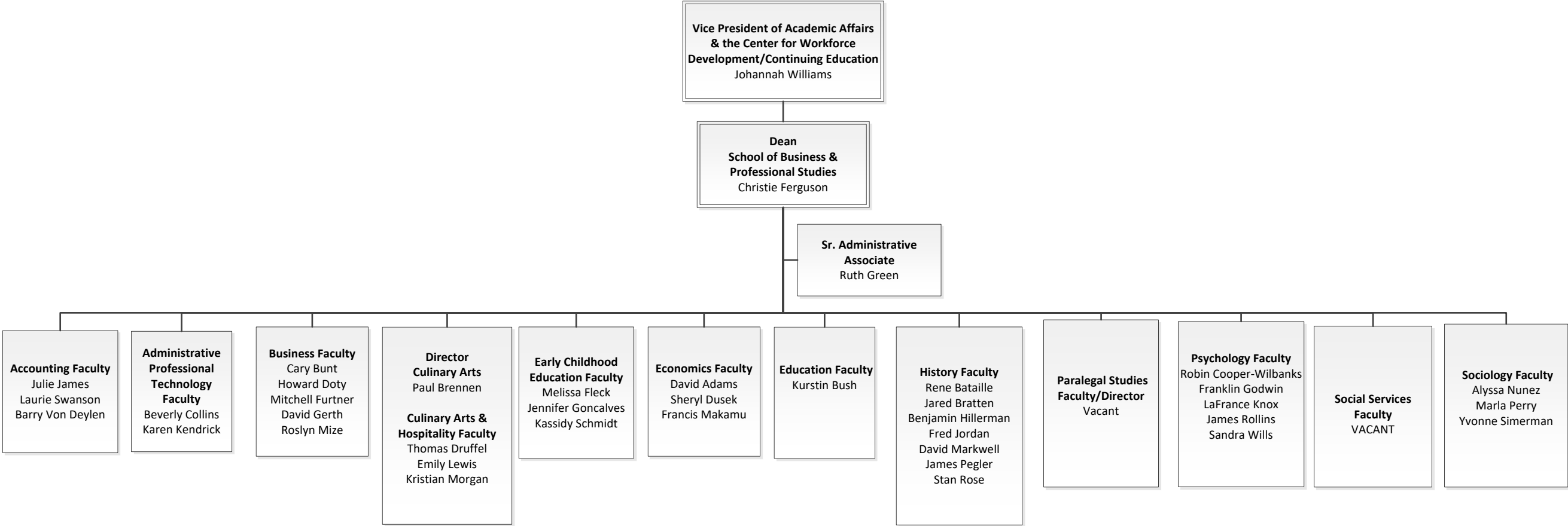
Academic Divisions



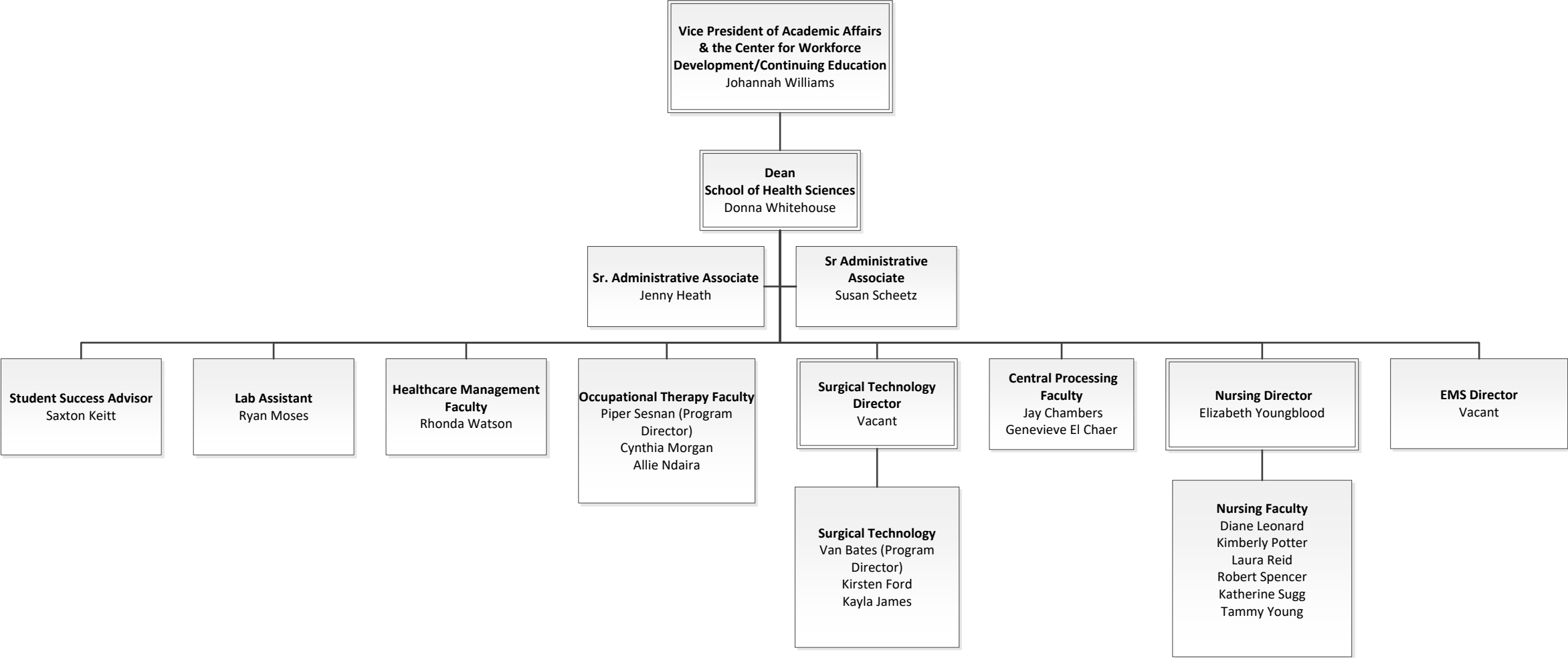
School of Arts & Humanities



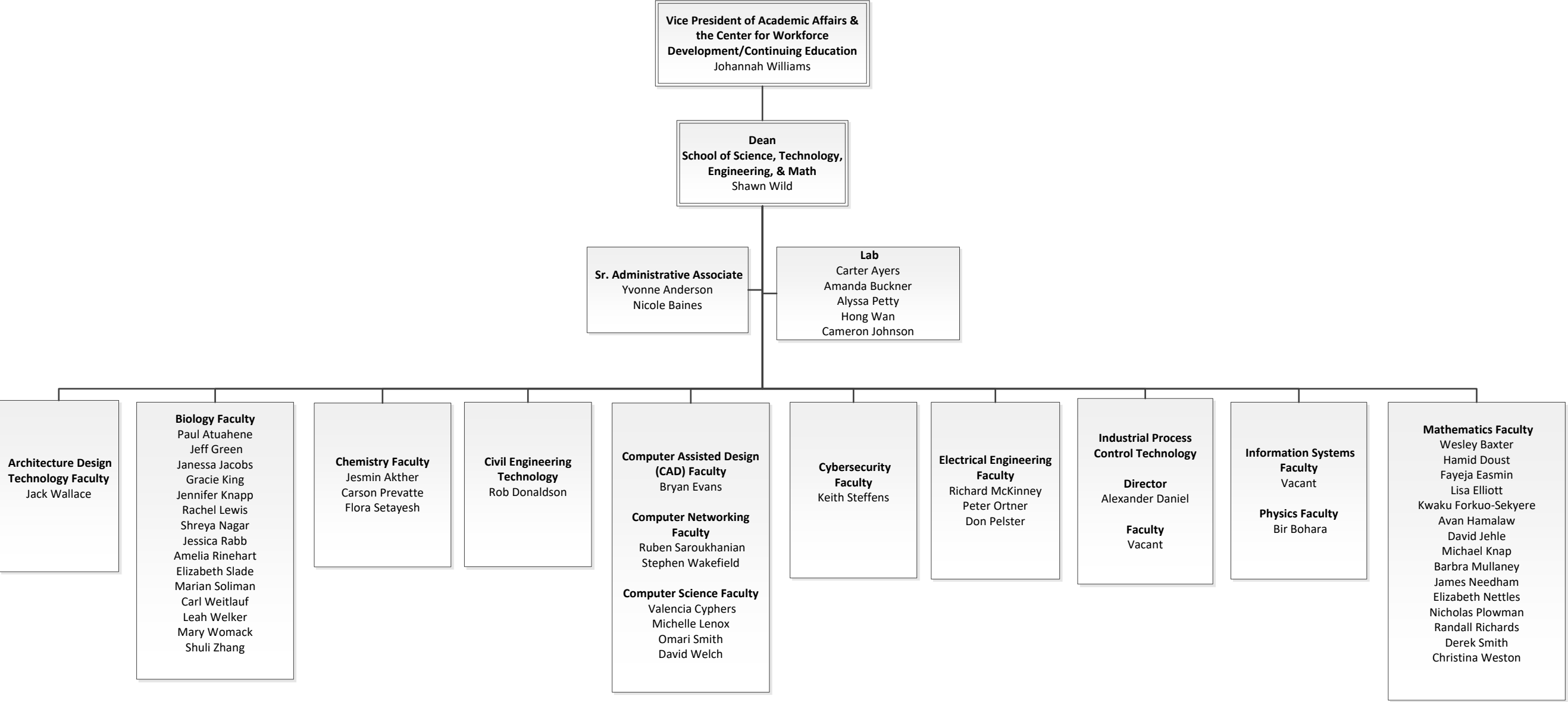
School of Business and Professional Studies



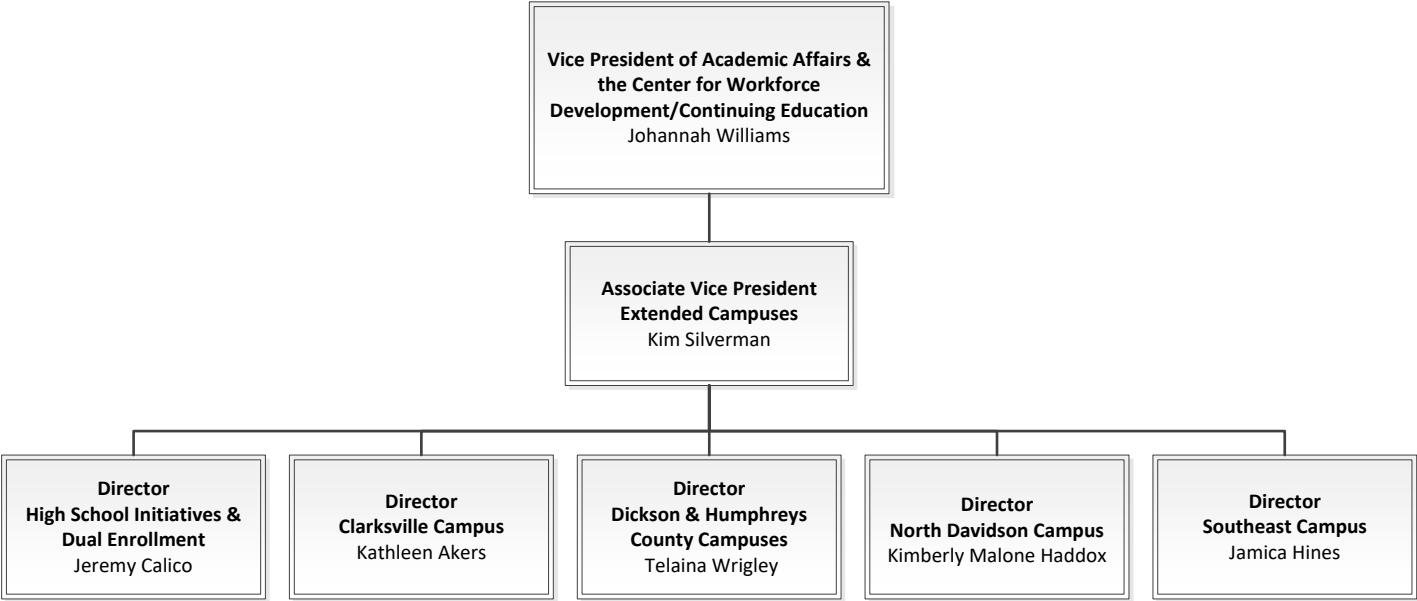
School of Health Sciences



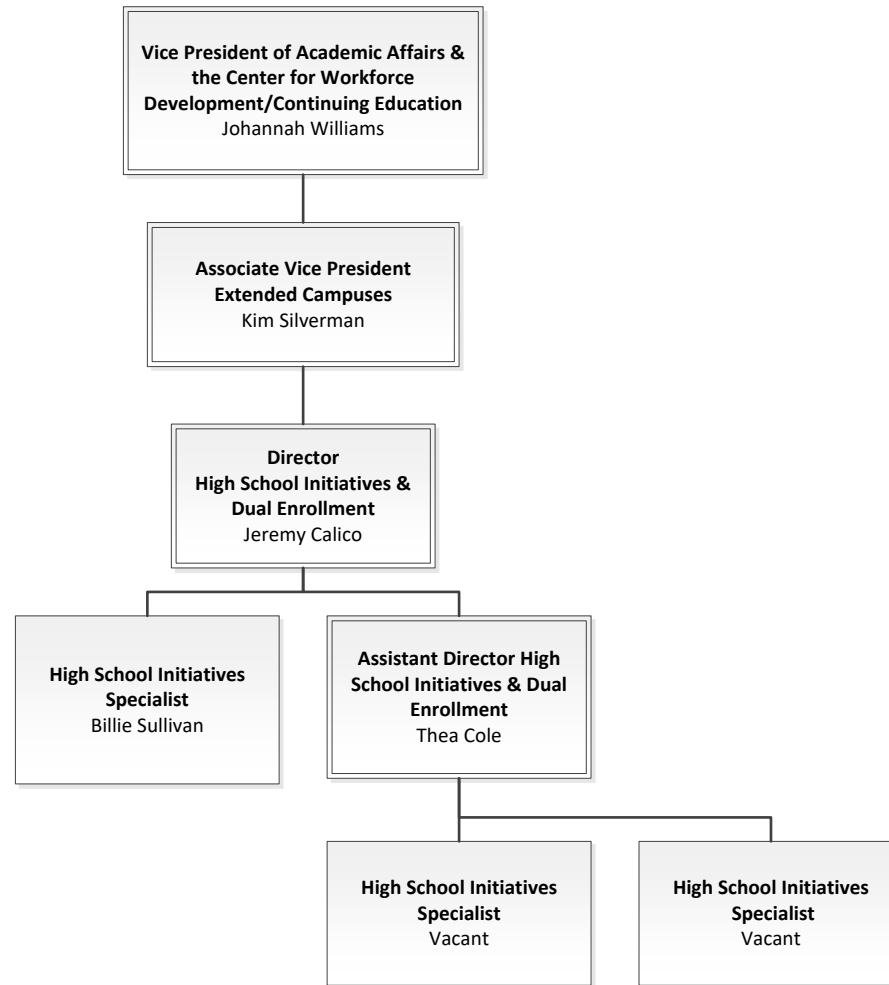
School of Science, Technology, Engineering, & Mathematics



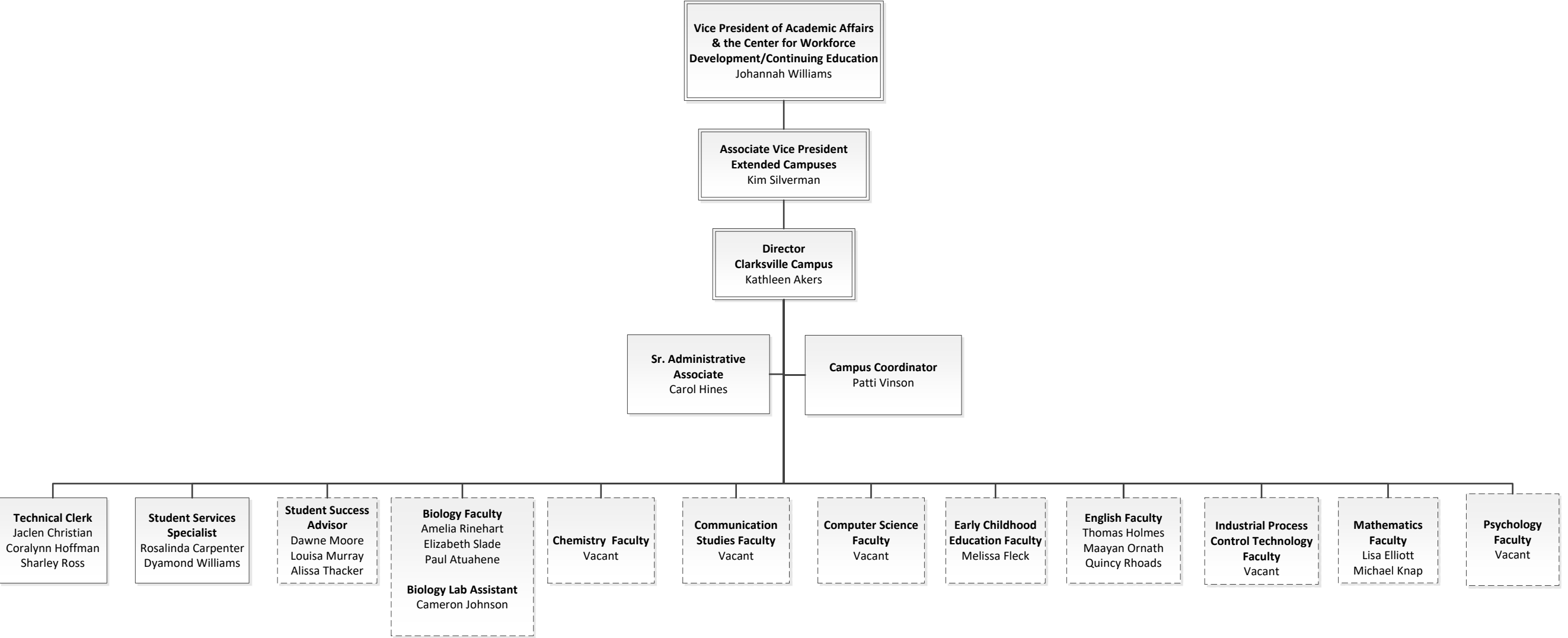
Office of the Associate Vice President of Extended Campuses



Office of High School Initiatives & Dual Enrollment



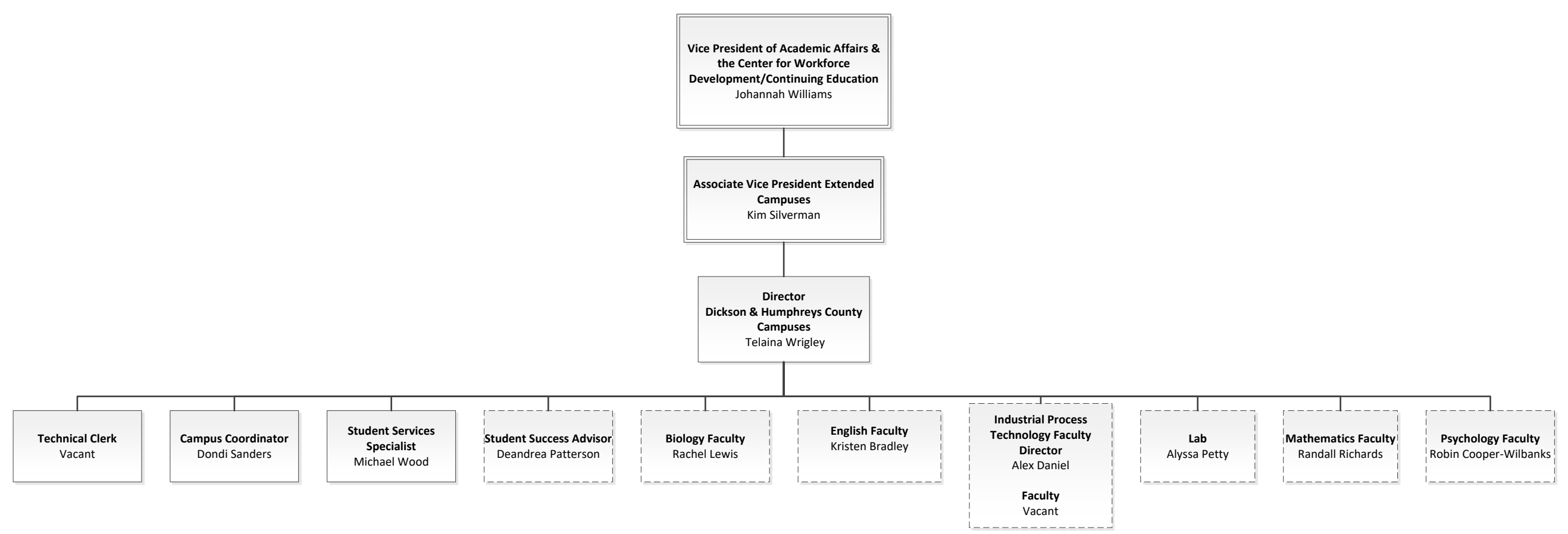
Clarksville Campus



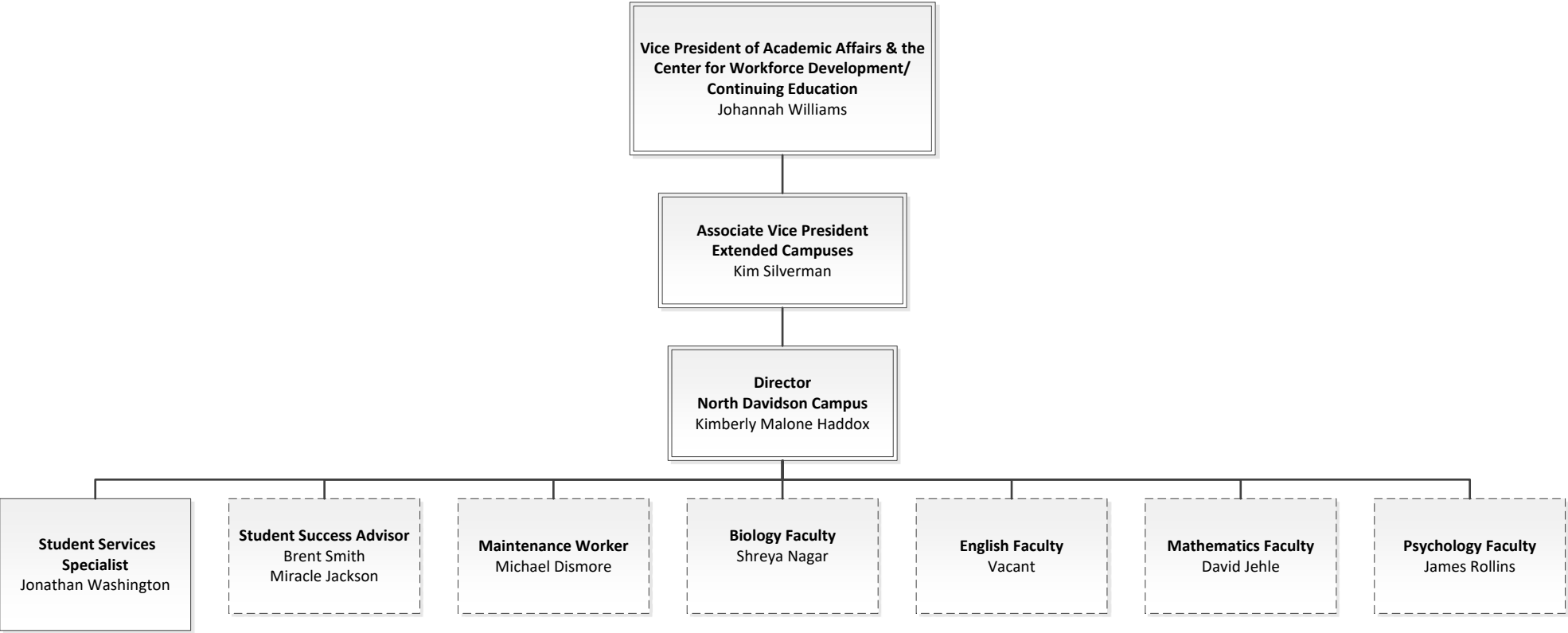
Dickson Campus



Humphreys County Campus



North Davidson Campus



Southeast Campus

