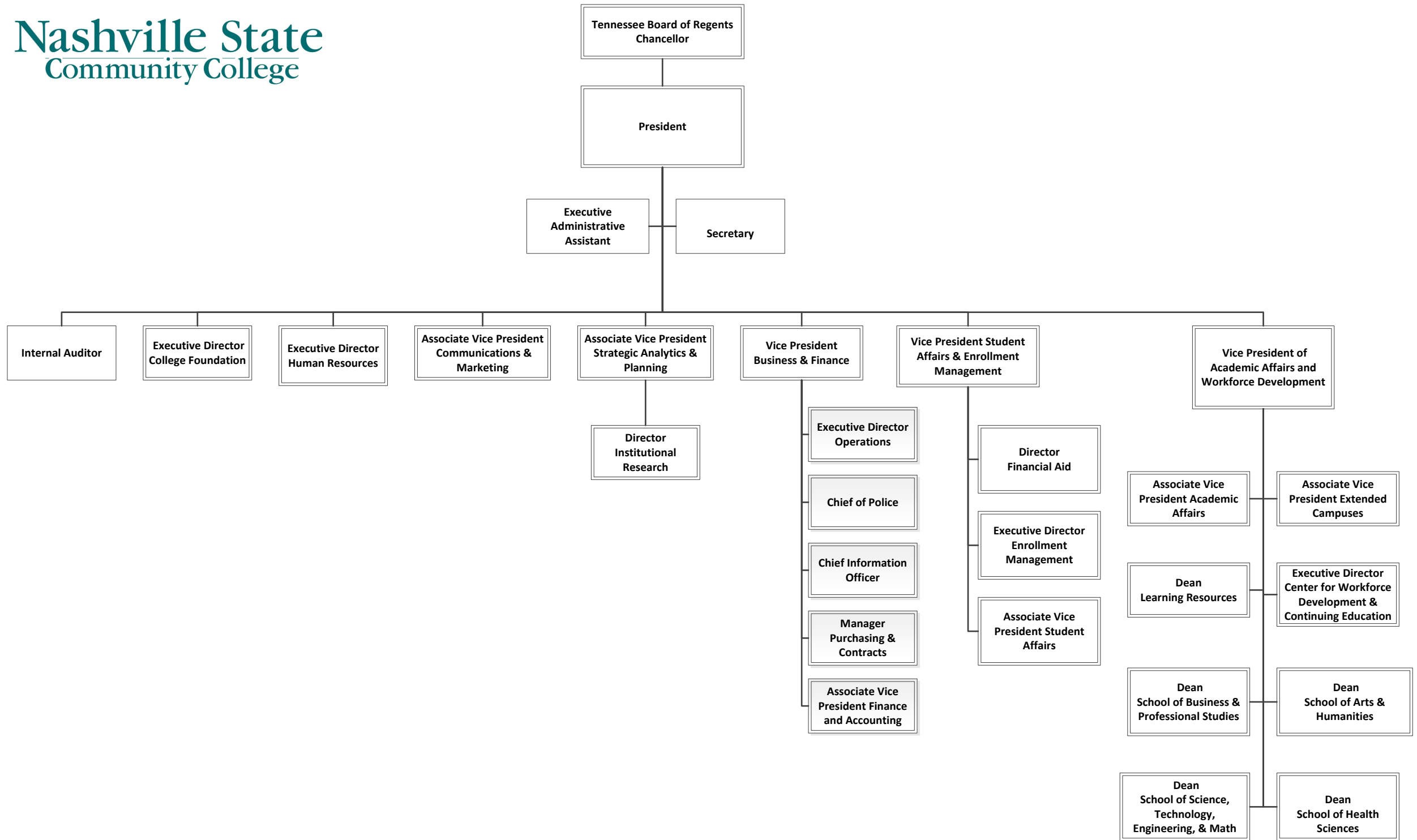


# **NASHVILLE STATE COMMUNITY COLLEGE ORGANIZATIONAL CHART**



# Office of the President

## **President's Office**

President's Office

Internal Auditor

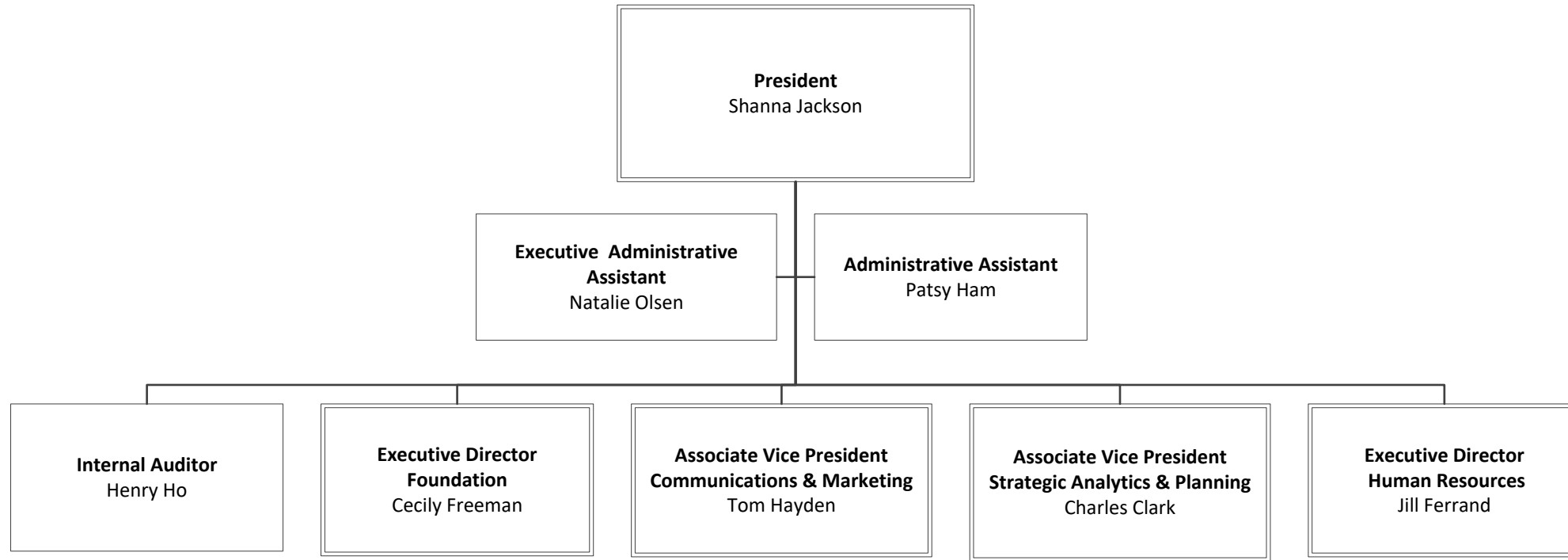
College Foundation

Communications & Marketing

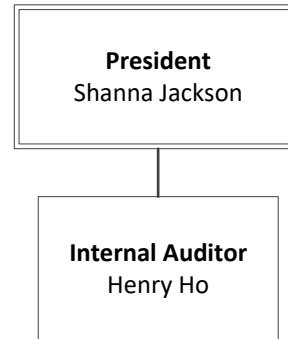
Strategic Analytics & Planning

Human Resources

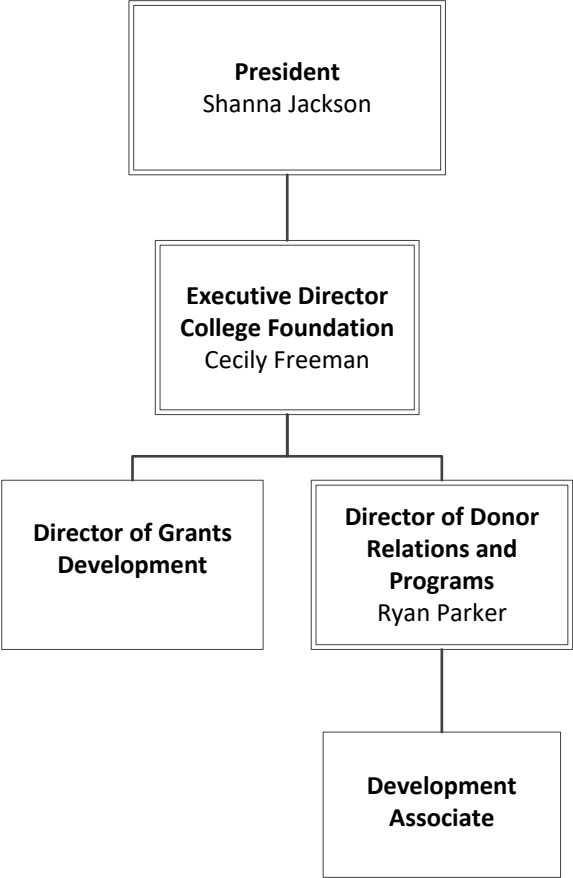
# Office of the President



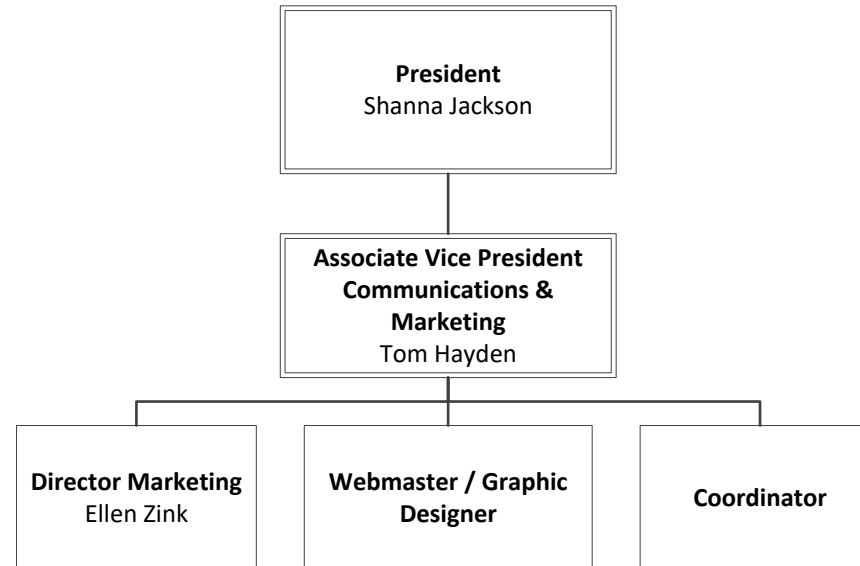
# Internal Auditor



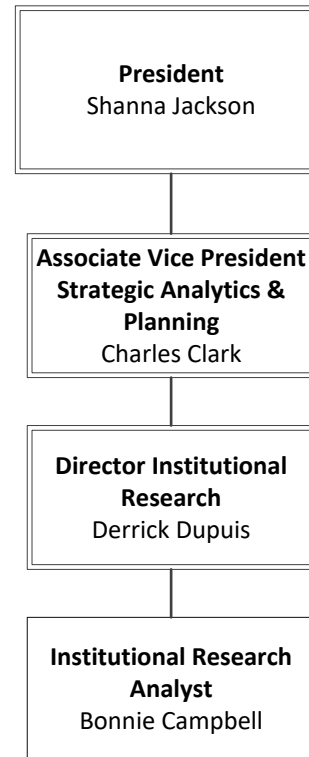
# College Foundation



# Communications and Marketing

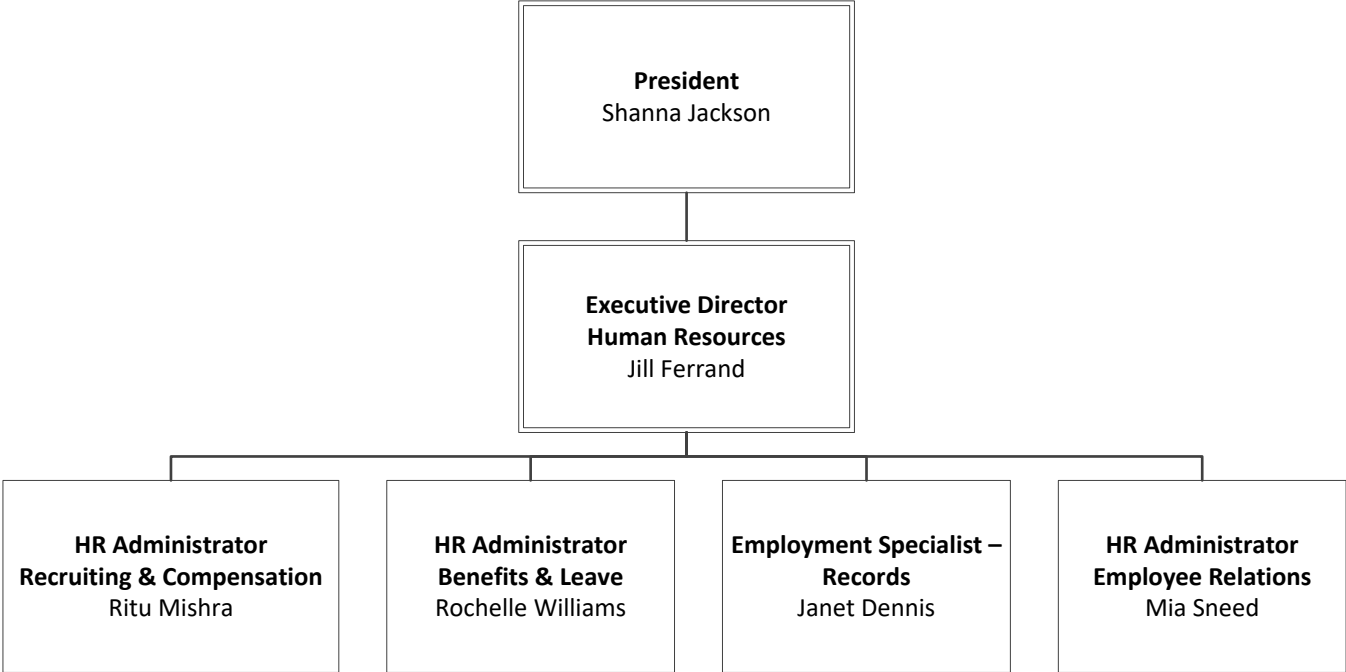


# Strategic Analytics and Planning





# Human Resources



# Office of Business & Finance

## **Vice President for Business & Finance**

Vice President's Office of Business & Finance

Office of Facilities Management

Police and Security

Technology Services

Purchasing and Contracts

## **Associate Vice President Finance & Accounting**

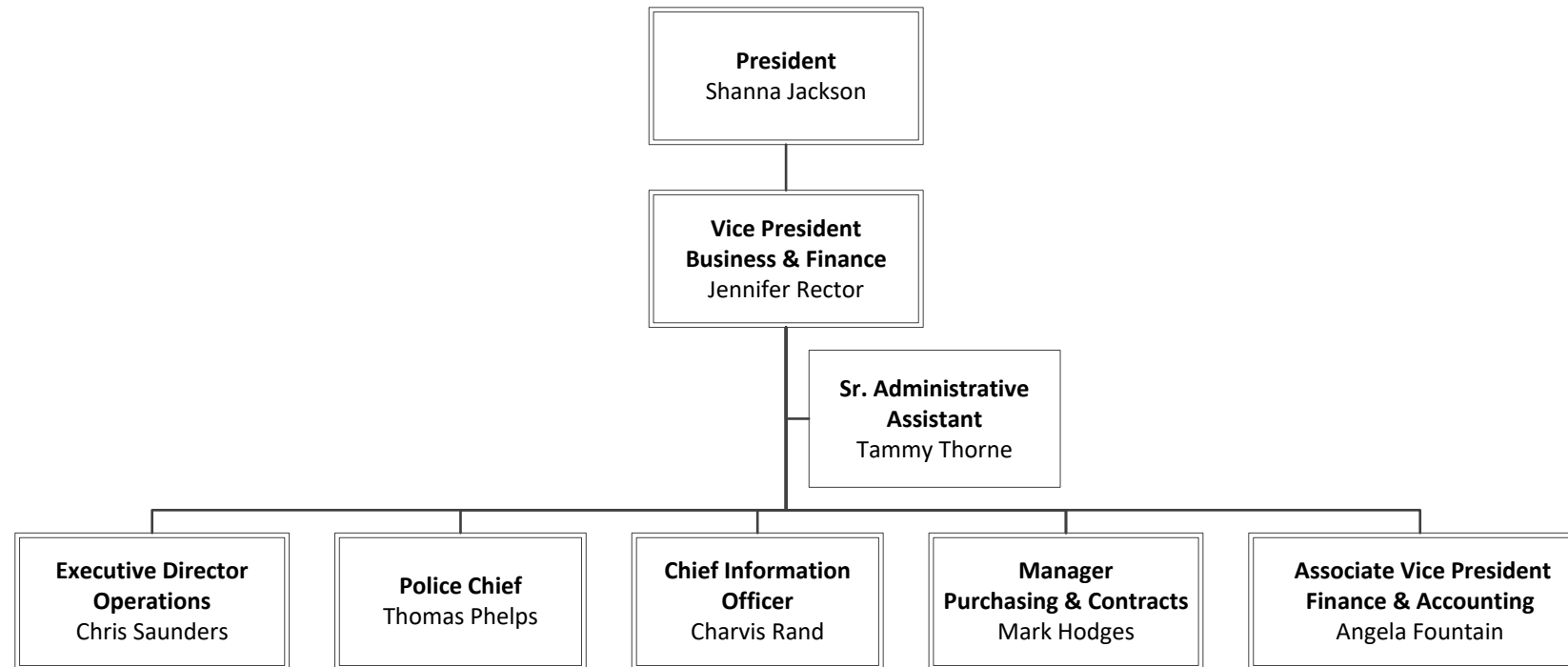
Accounting & External Reporting

Payroll

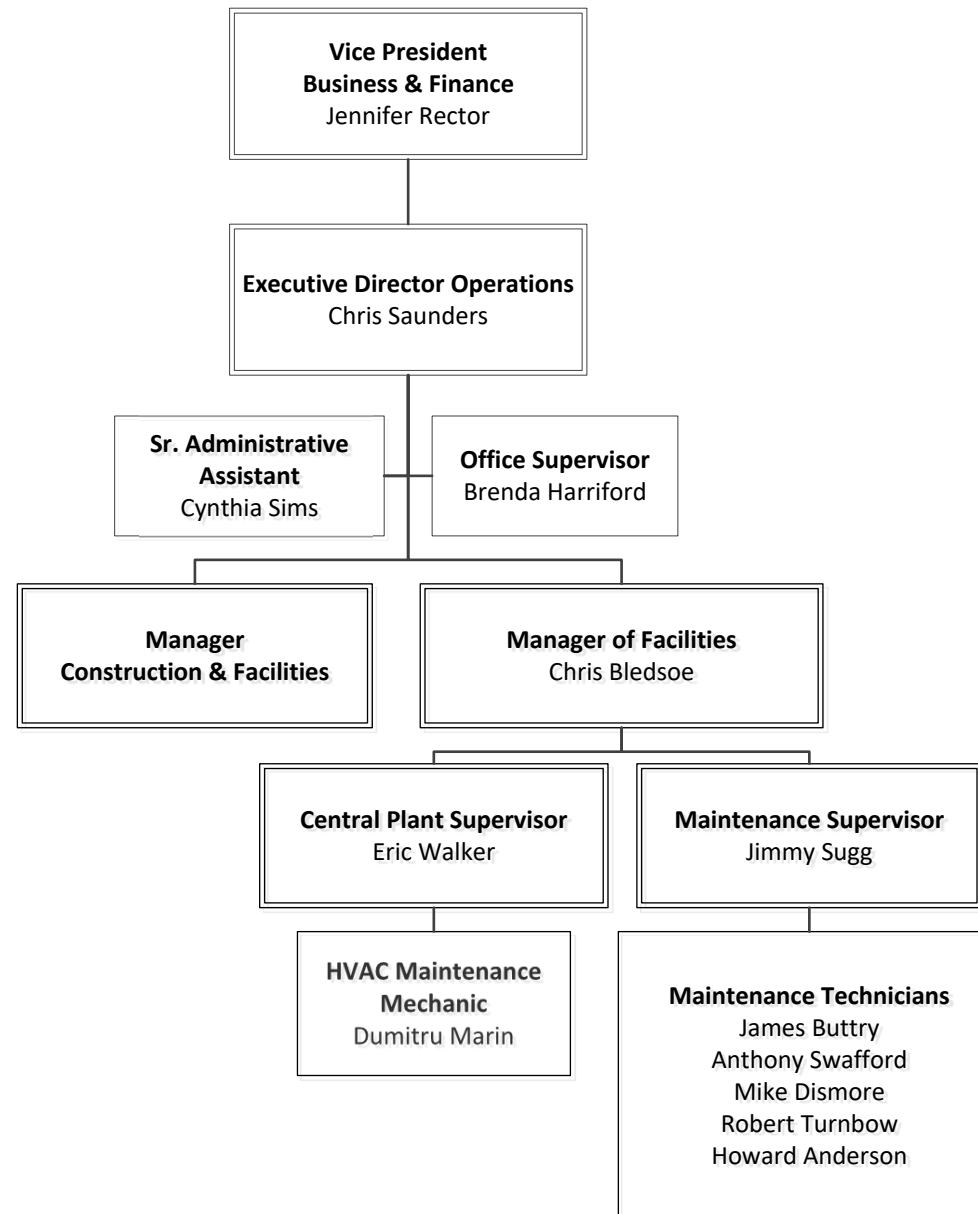
Budget and Travel

Student Accounts

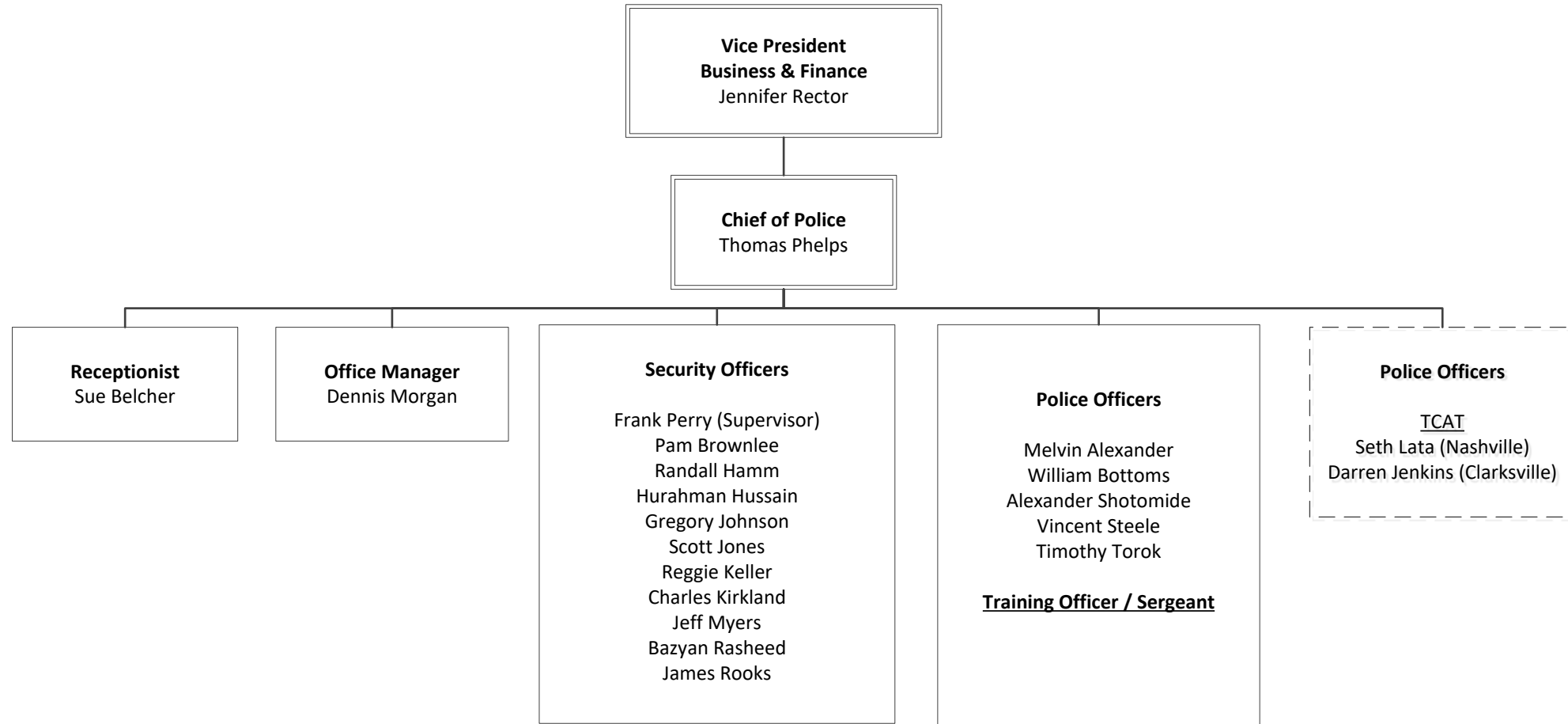
# Vice President for Business & Finance



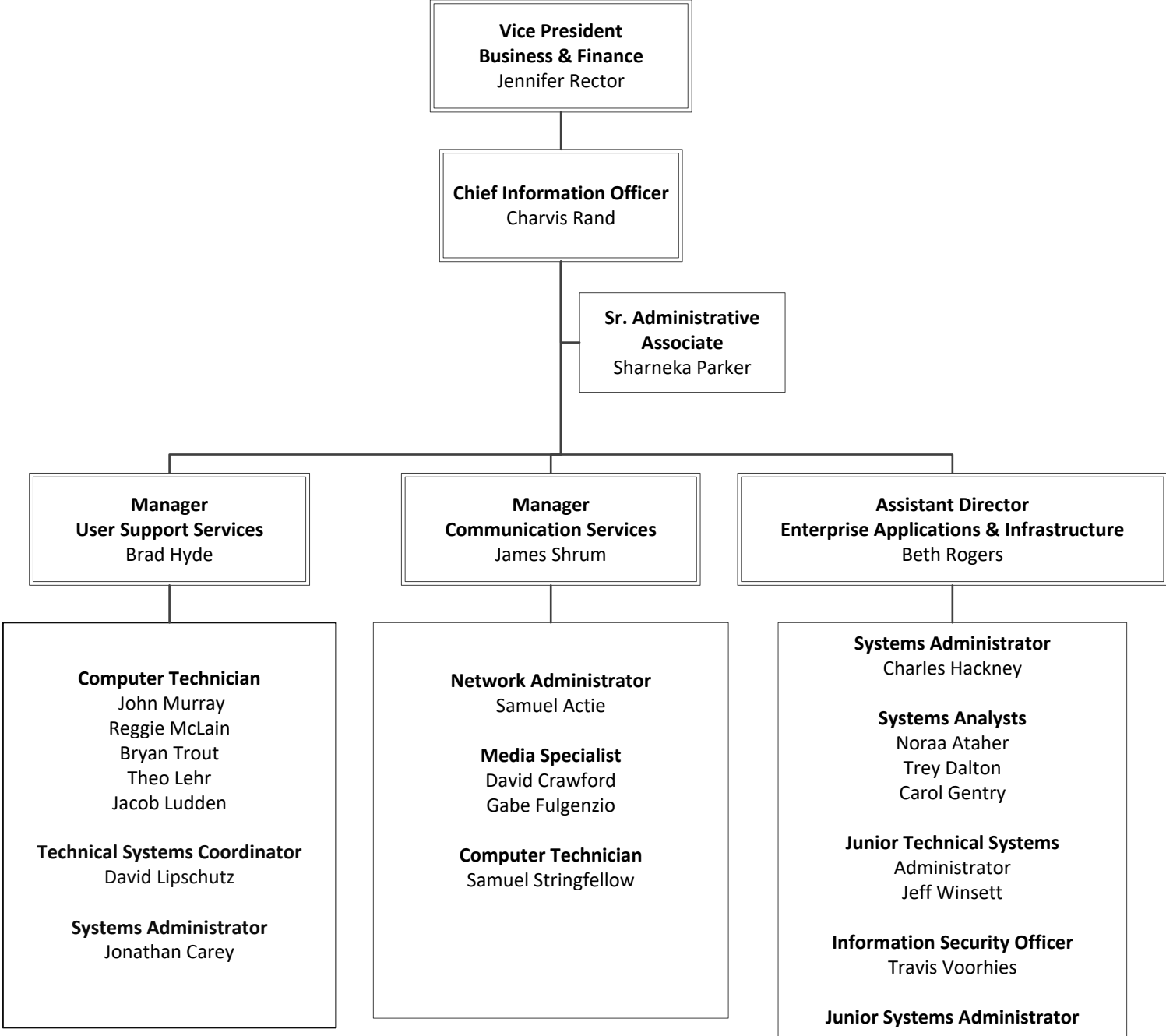
# Facilities Management



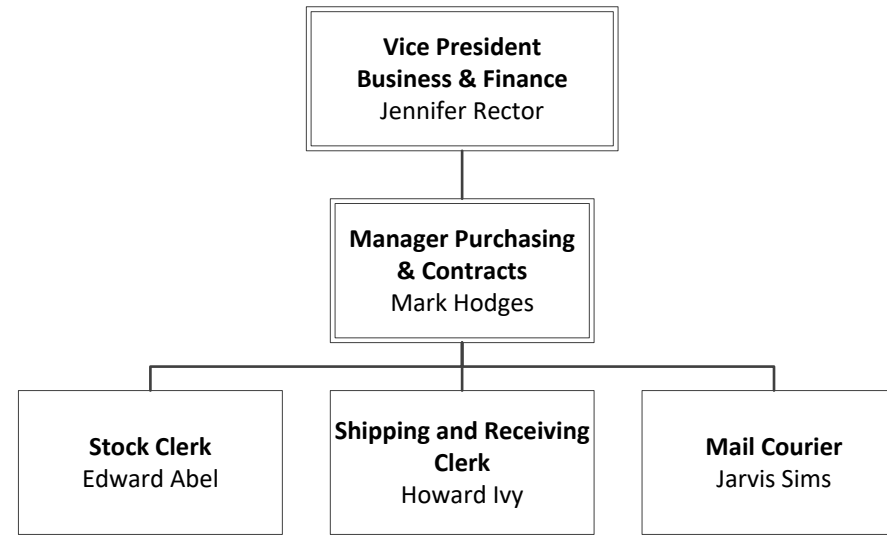
# Police and Security



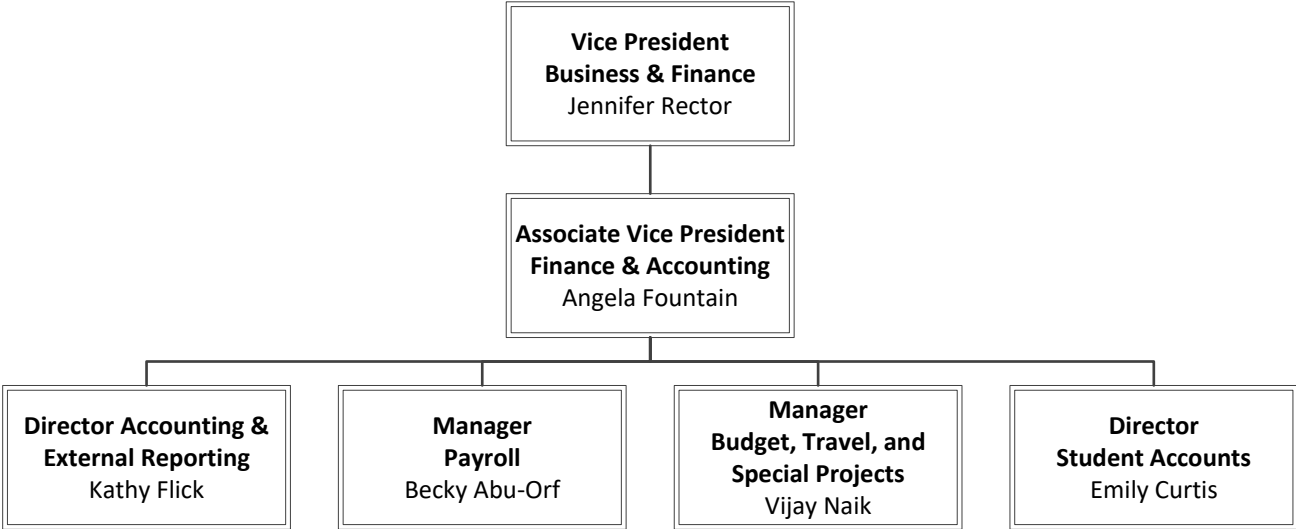
# Technology Services



# Purchasing & Contracts

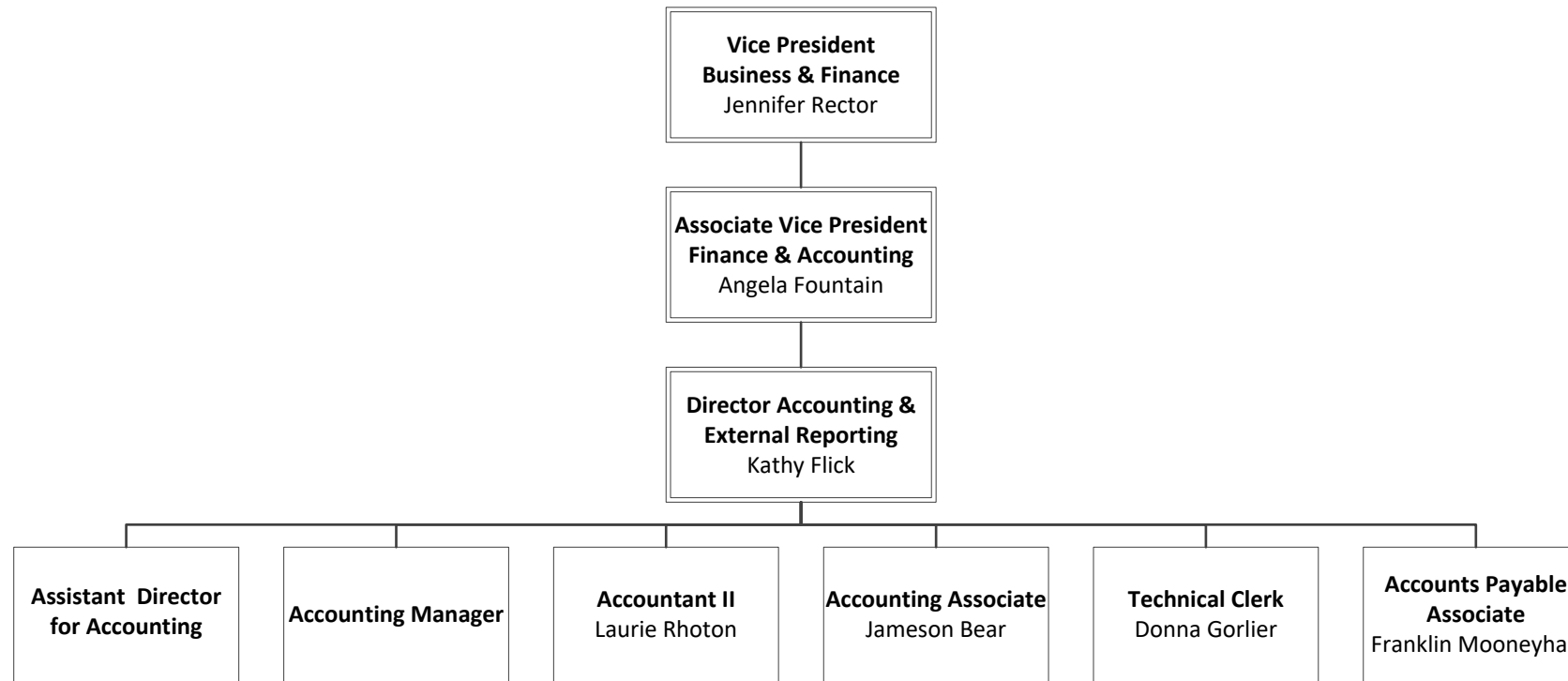


# Associate VP for Finance and Accounting

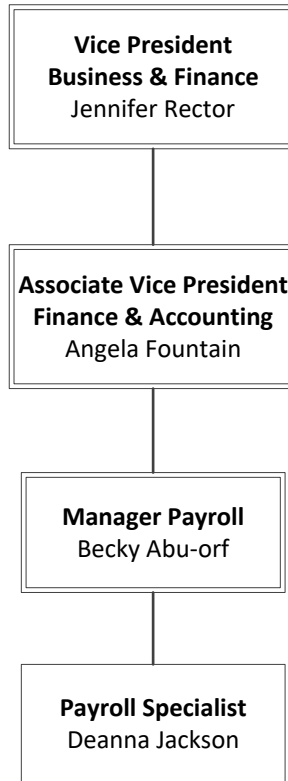




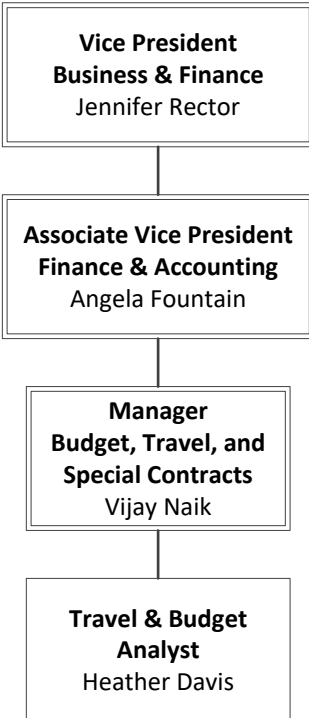
# Accounting & External Reporting



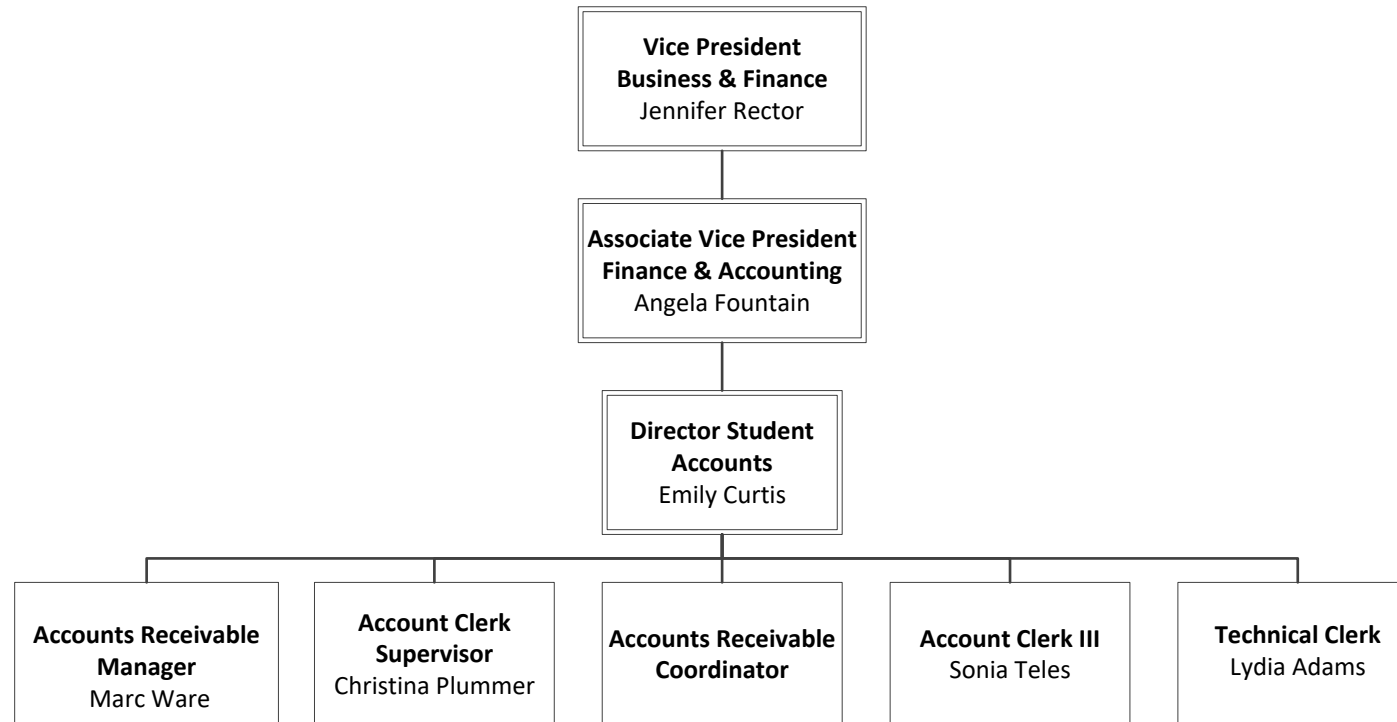
# Payroll



# Budget and Travel



# Student Accounts



# Office of the Student Affairs and Enrollment Management

## Vice President for Student Affairs and Enrollment Management

Financial Aid

Enrollment Services

Associate Vice President for Student Affairs

## Office of Enrollment Services

Admission & Records

Welcome Center & Career Services

Testing Center

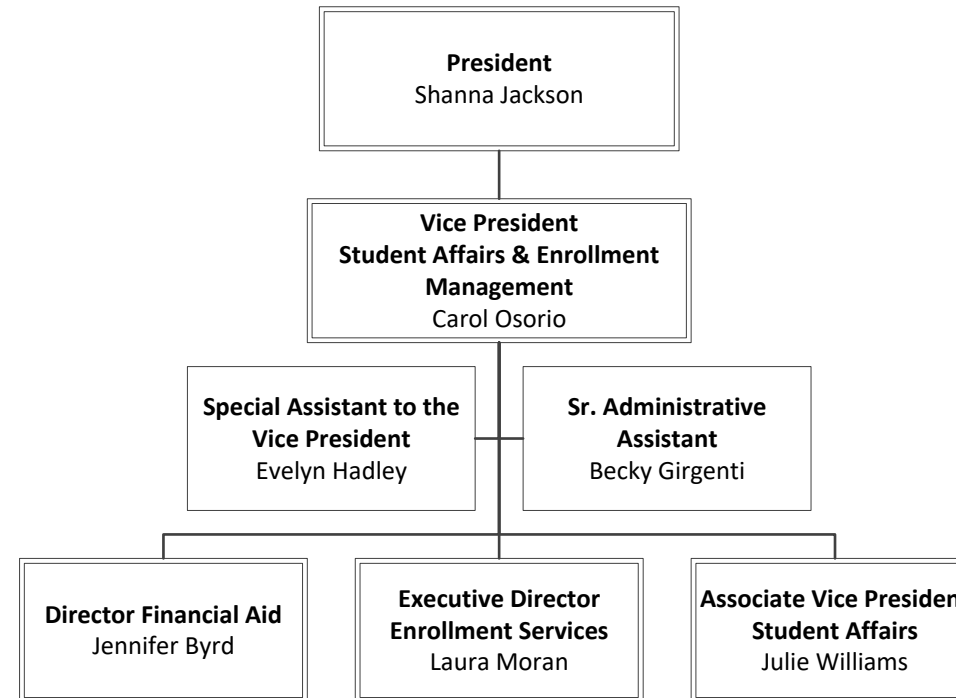
## Office of Associate Vice President Student Affairs

Student Success Center/ NashGRAD

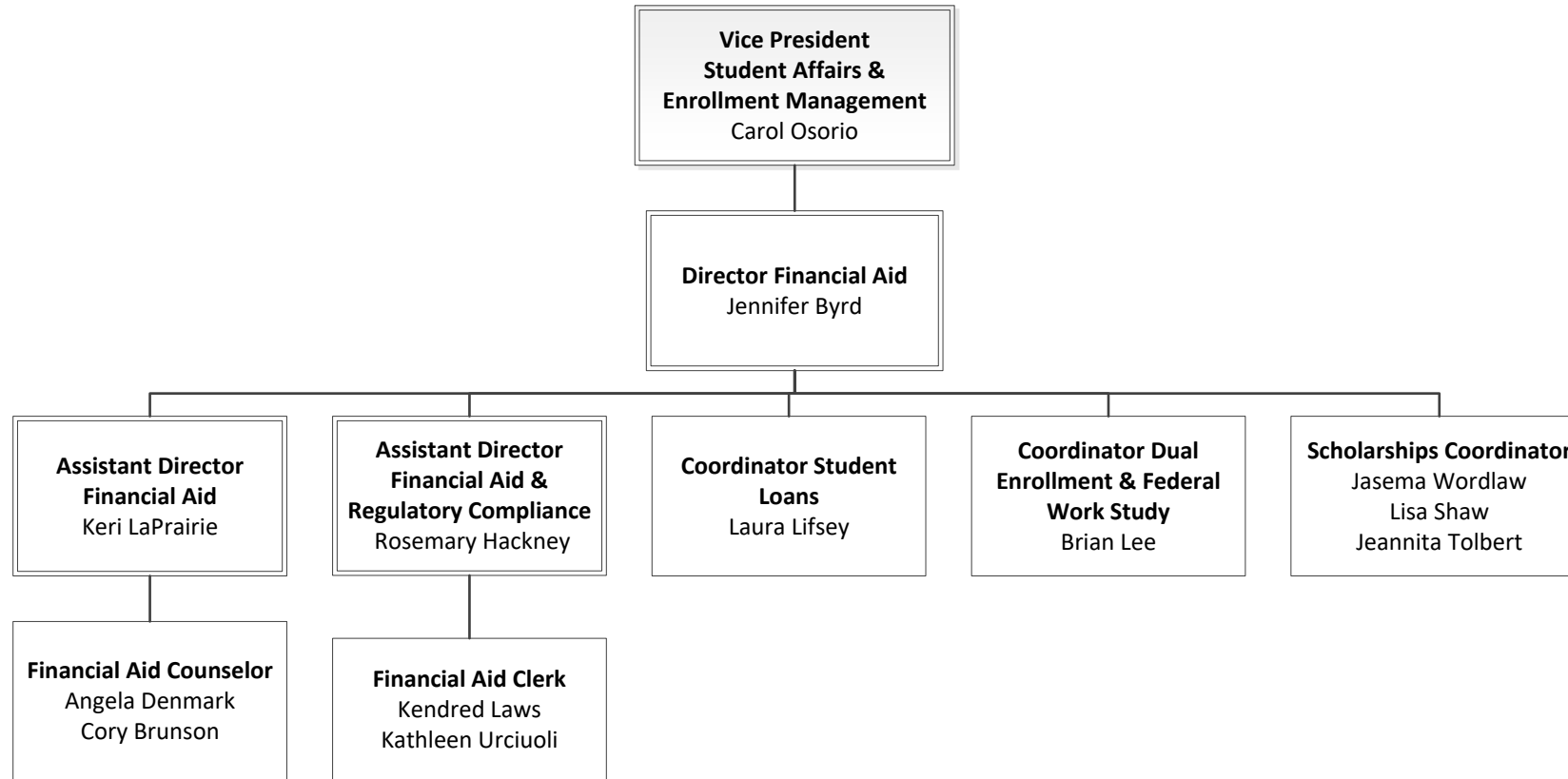
Access Center

Student Life

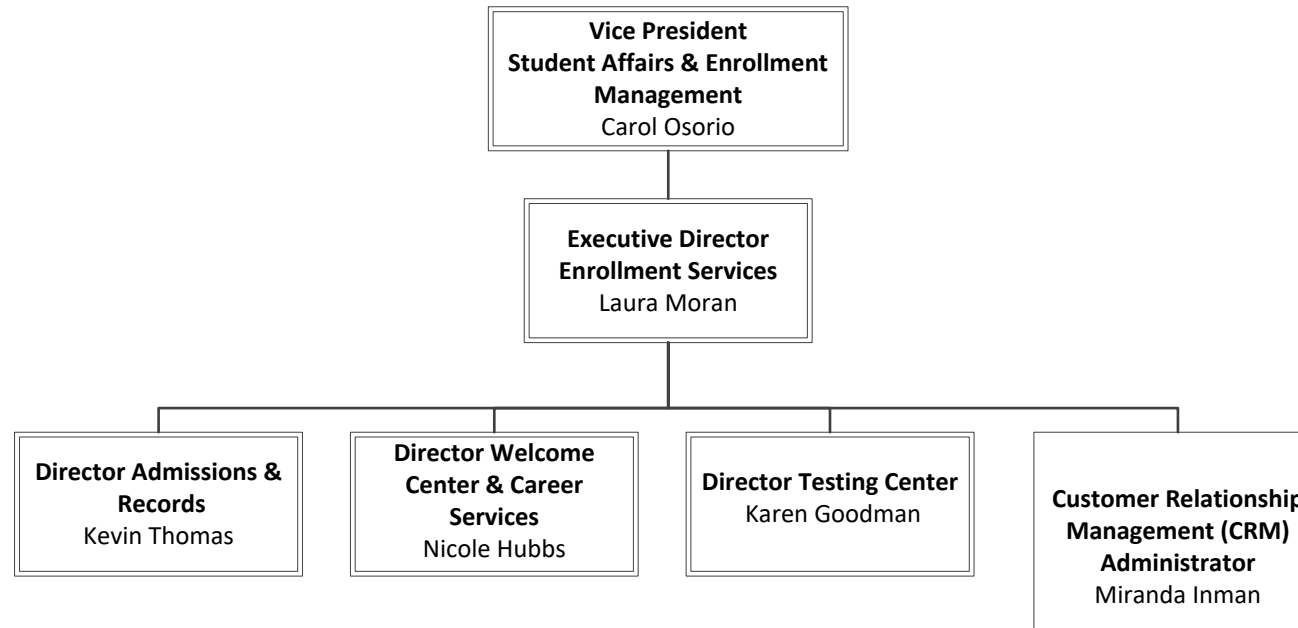
# Vice President for Student Affairs & Enrollment Management



# Financial Aid

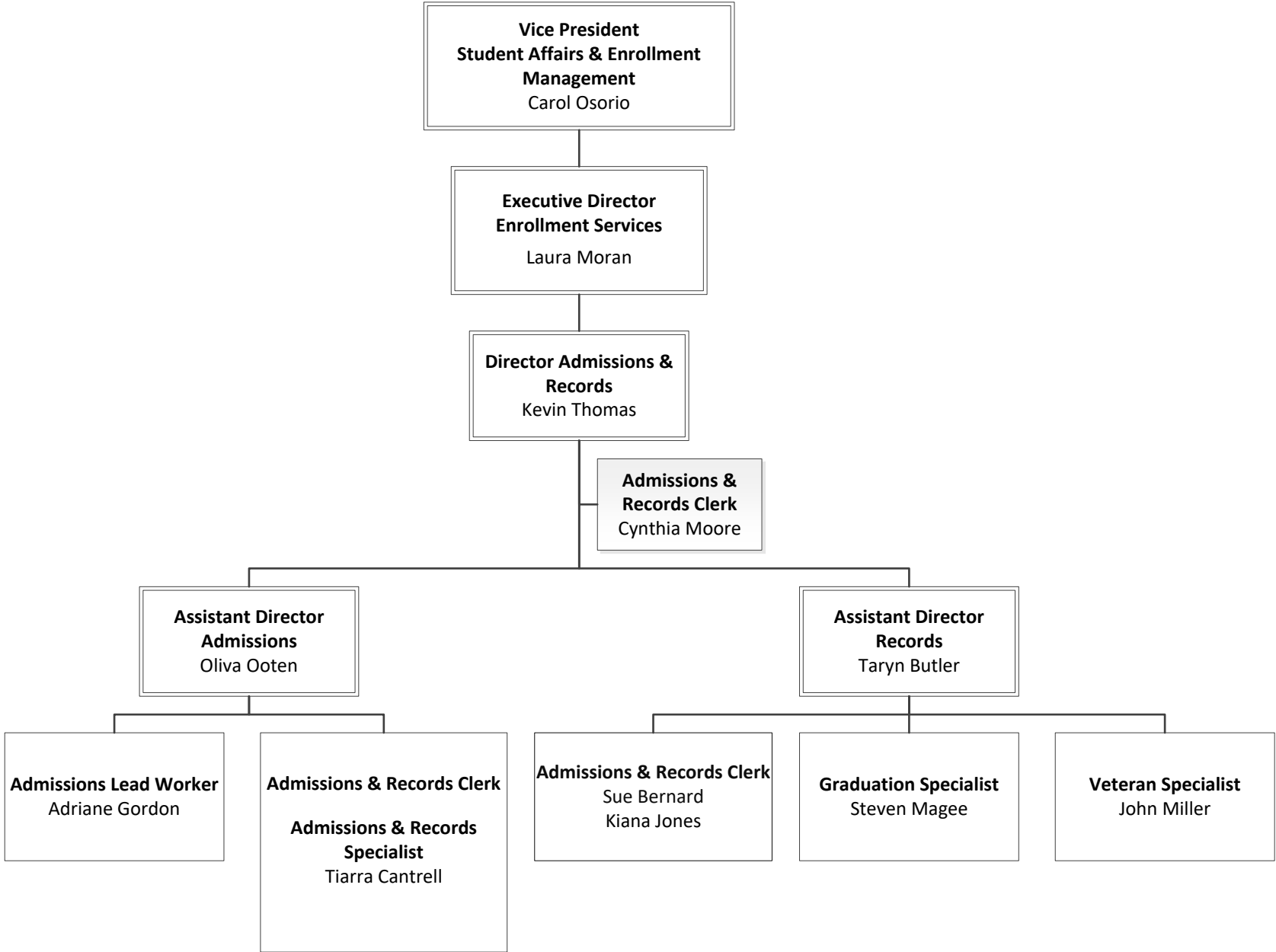


# Enrollment Services

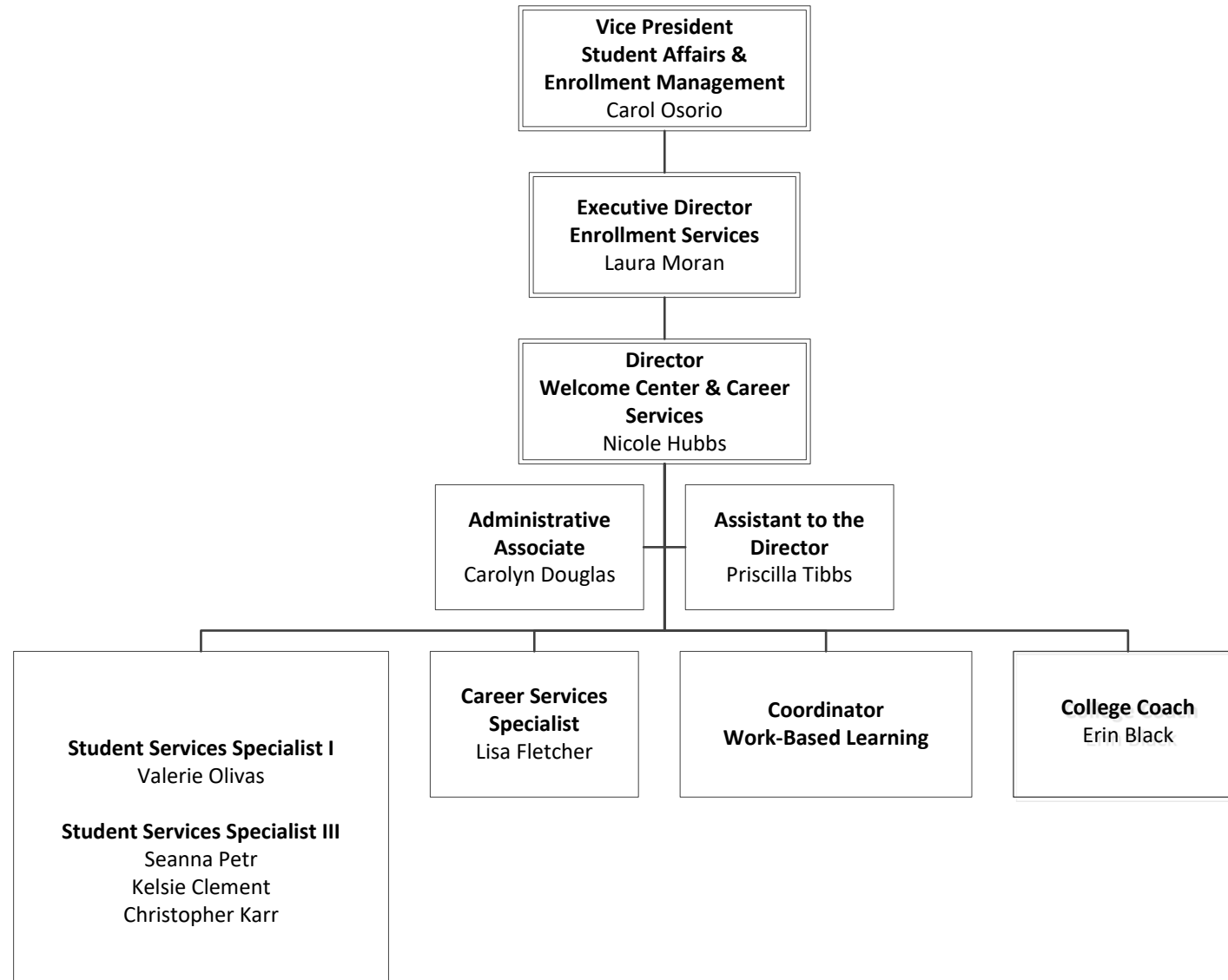




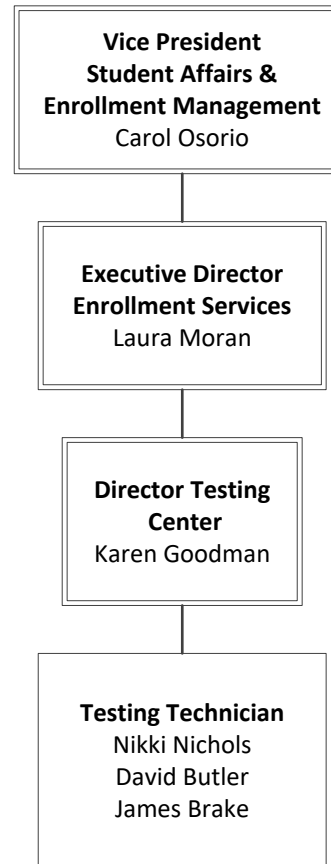
# Admissions & Records



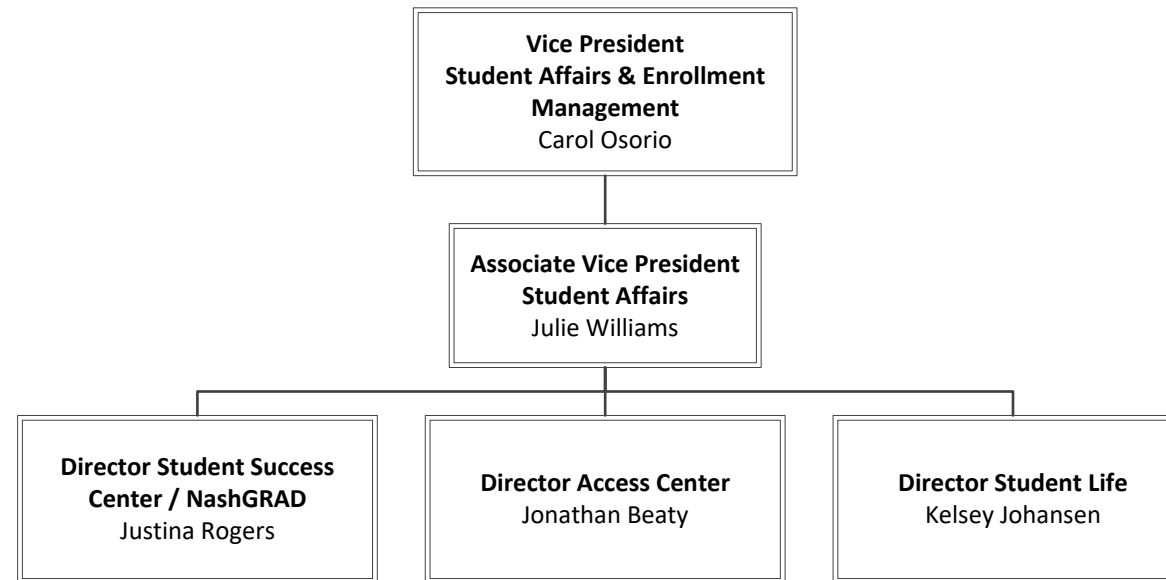
# Welcome Center & Career Services



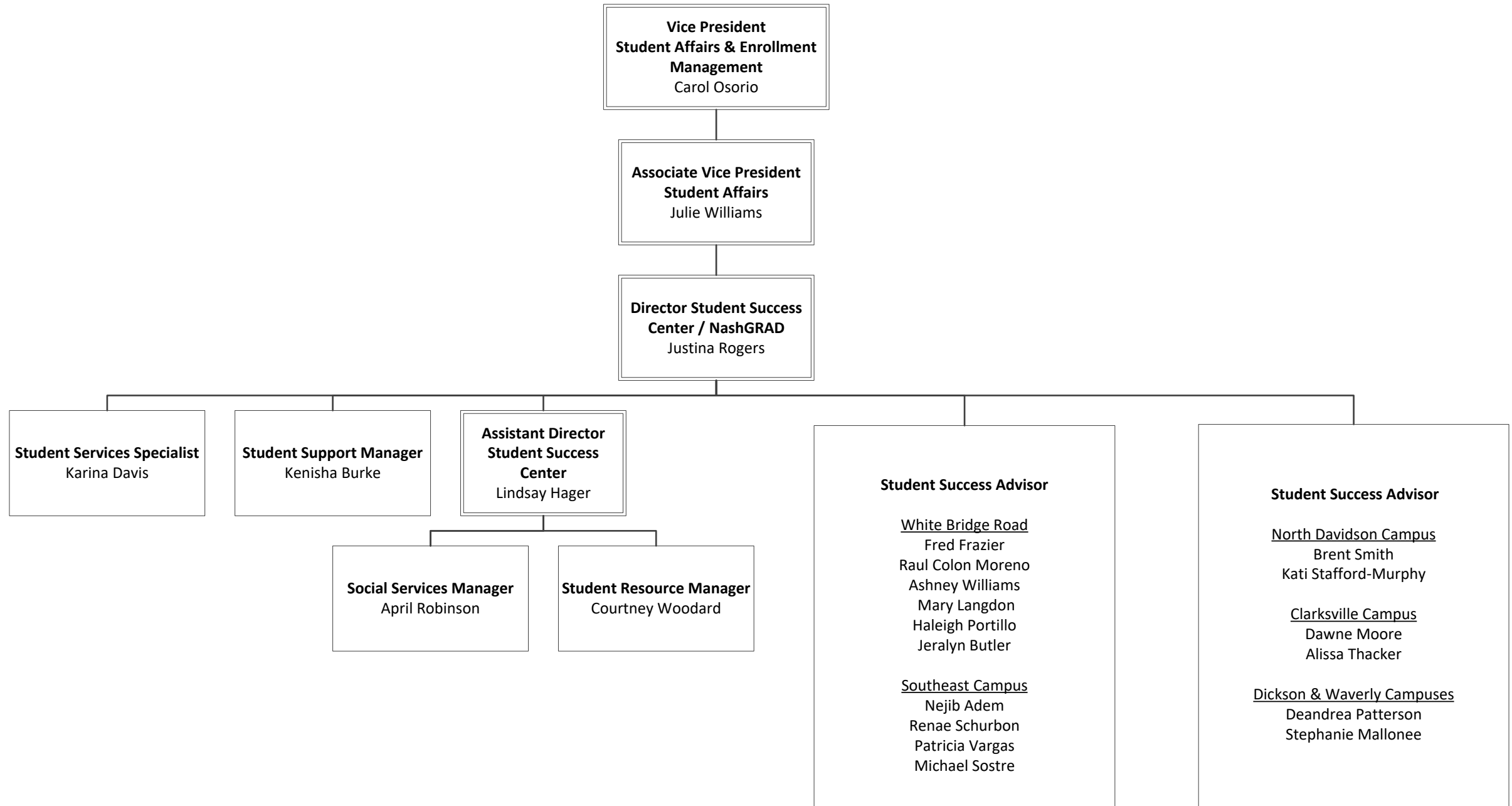
# Testing Center



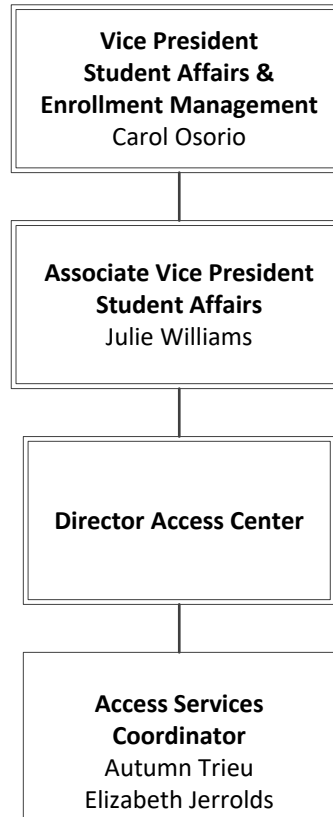
# Associate Vice President for Student Affairs



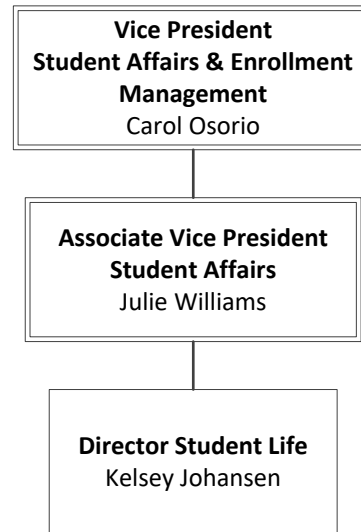
# Student Success Center



# Access Center



# Student Life



# Office of Academic Affairs

## **Vice President for Academic Affairs and Workforce Development**

Center for Workforce Development and Continuing Education  
Learning Resources

## **Associate Vice President Academic Affairs**

Online Learning

## **Associate Vice President Extended Campuses**

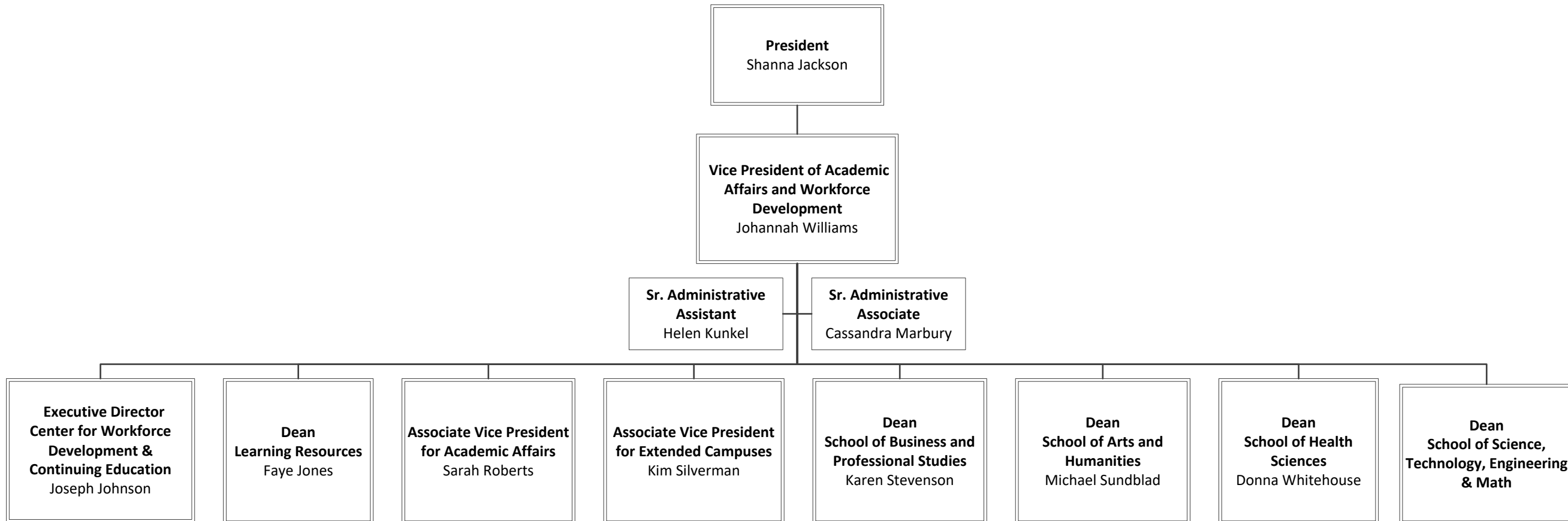
High School Initiatives & Dual Enrollment  
Clarksville Campus  
Dickson Campus  
Humphreys County Campus  
North Davidson Campus  
Southeast Campus

## **Academic Divisions**

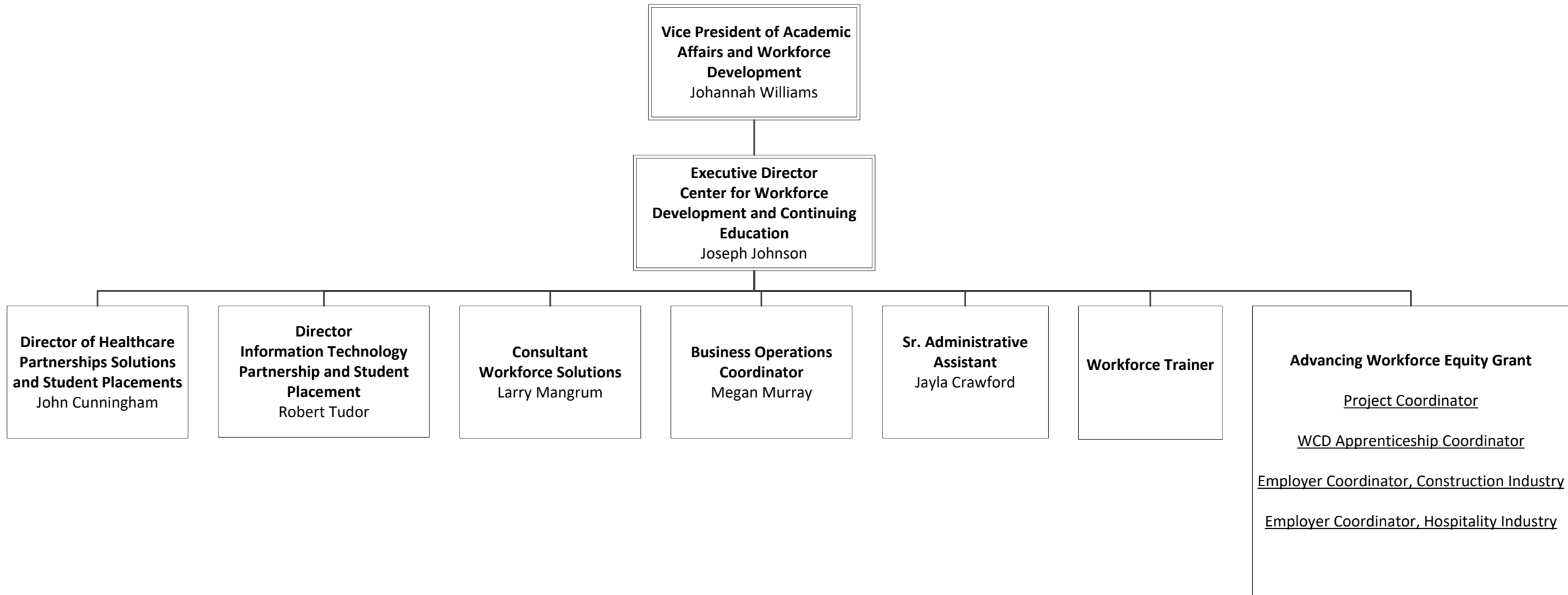
School of Business and Professional Studies  
School of Arts and Humanities  
School of Health Sciences  
School of Science, Technology, Engineering and Mathematics



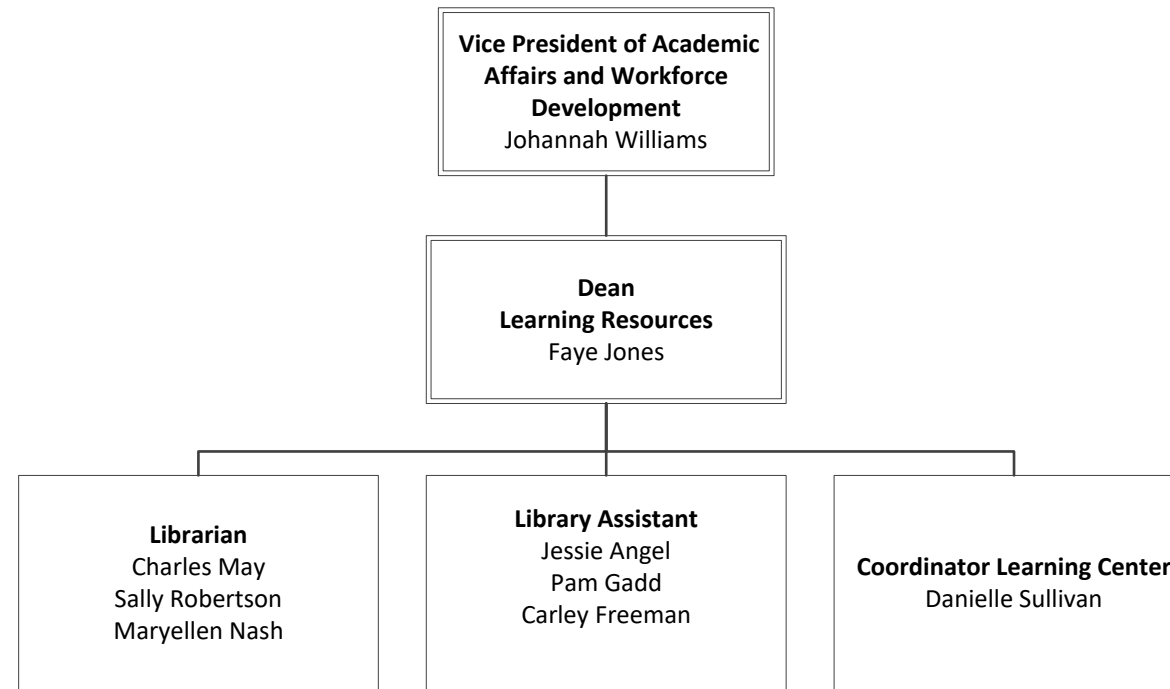
# Vice President for Academic Affairs



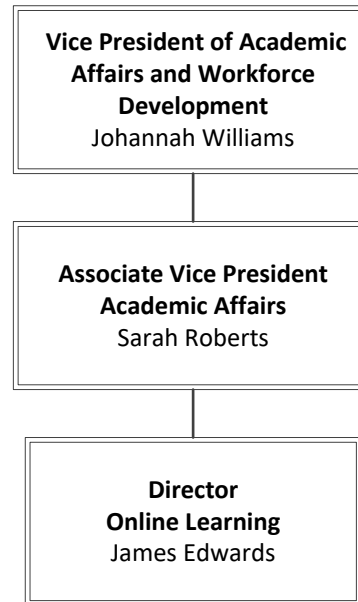
# Center for Workforce Development & Continuing Education



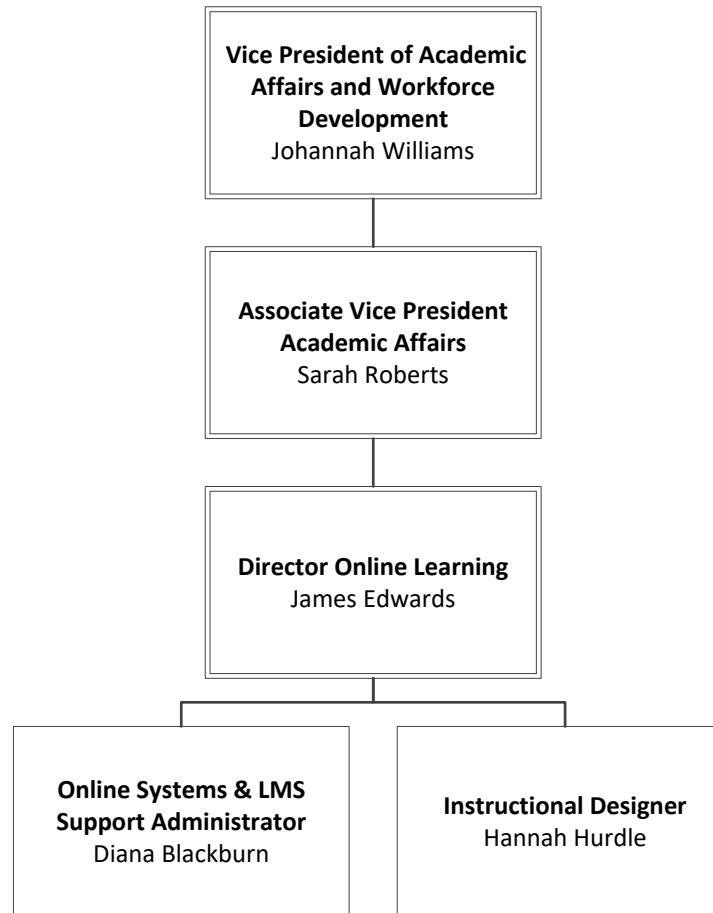
# Learning Resources



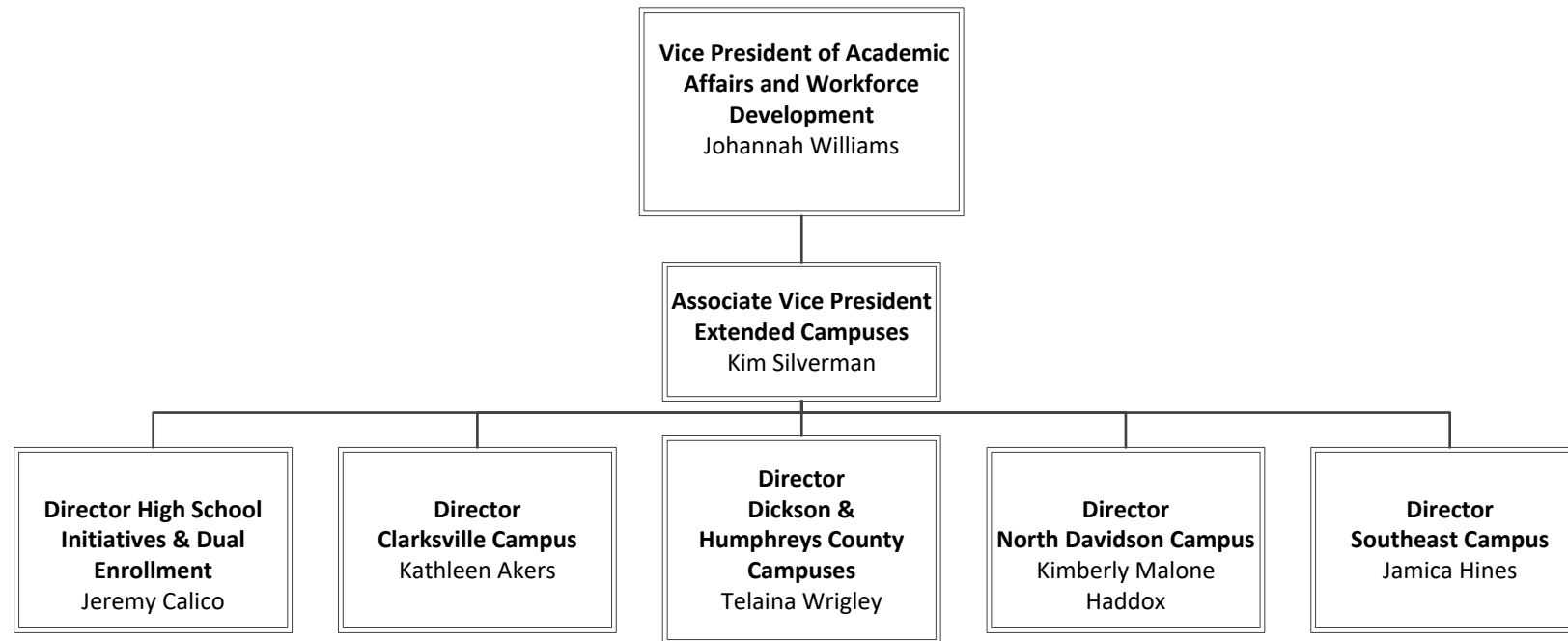
# Associate Vice President for Academic Affairs



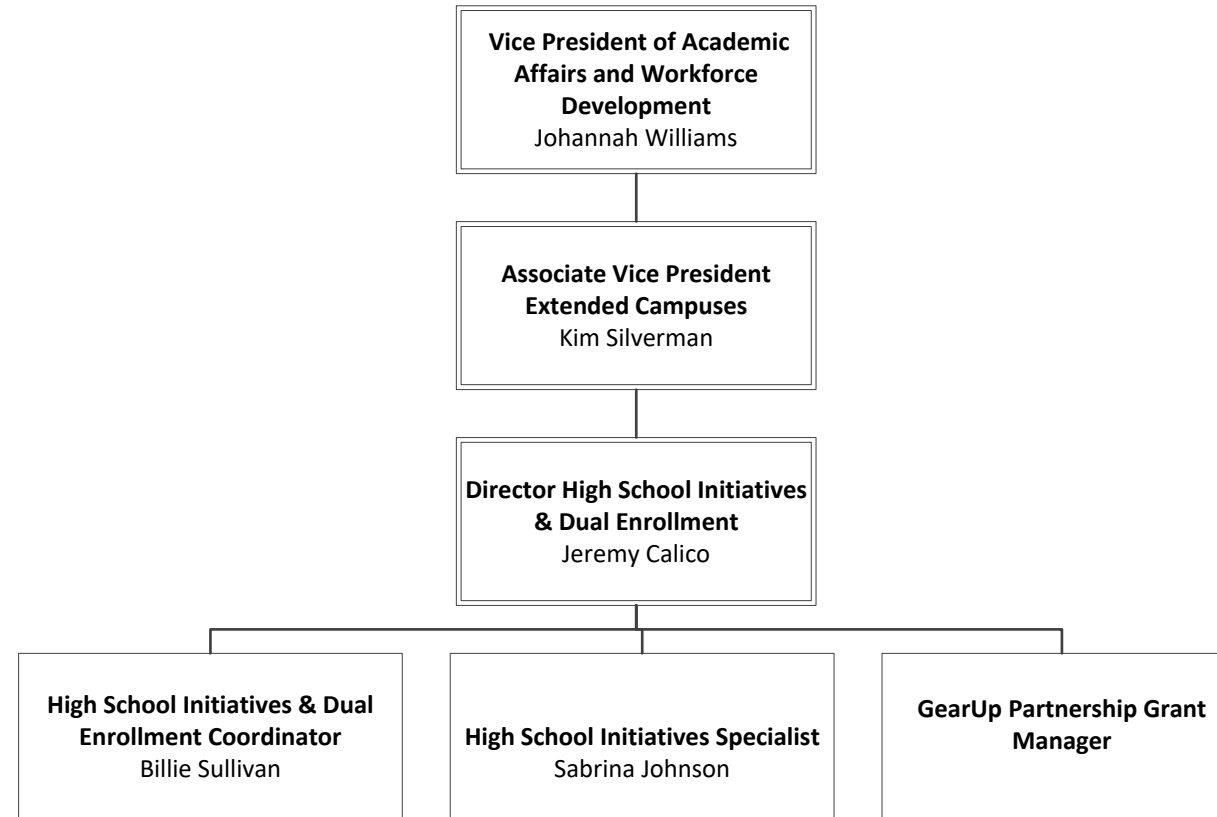
# Online Learning



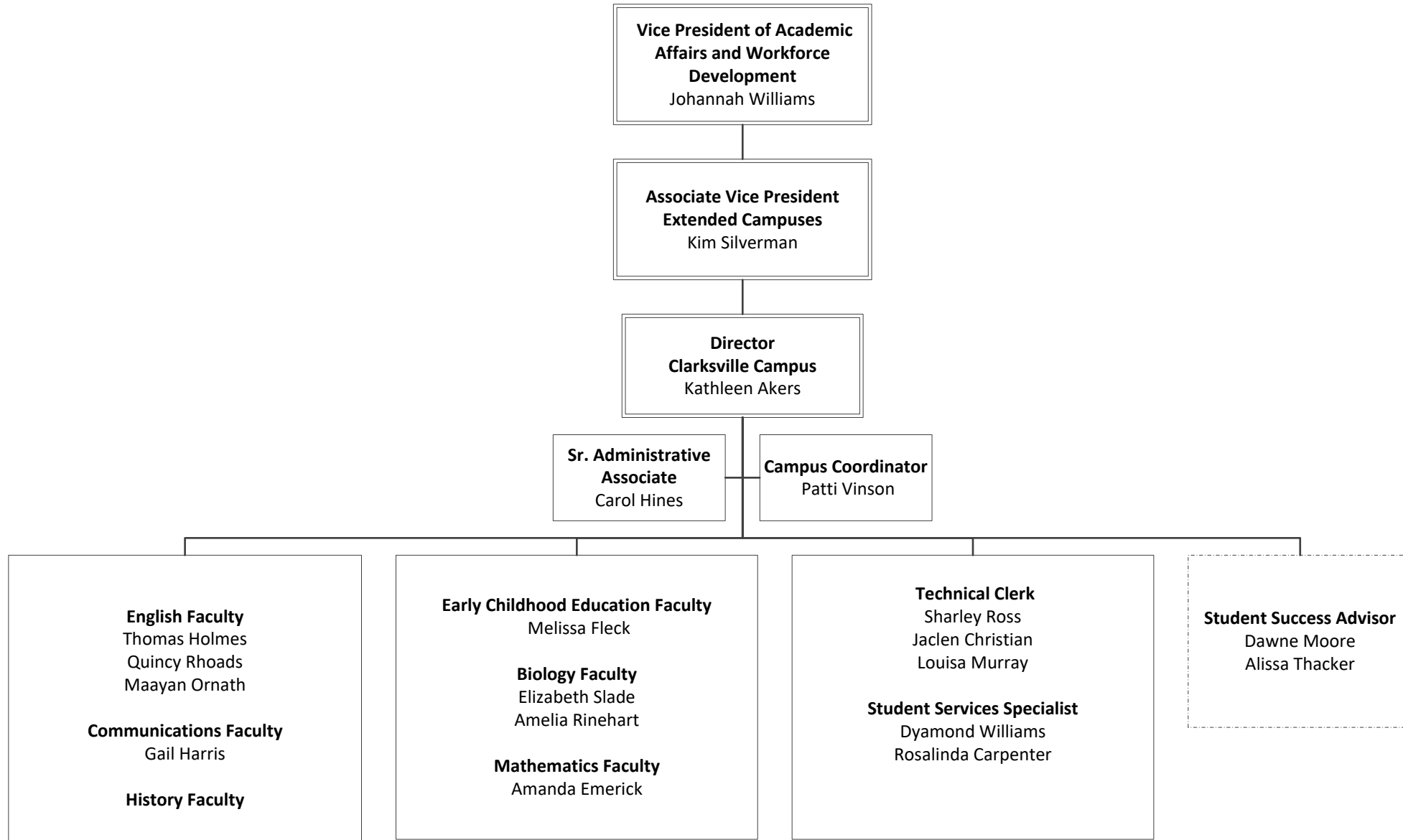
# Associate Vice President for Extended Campuses



# High School Initiatives and Dual Enrollment

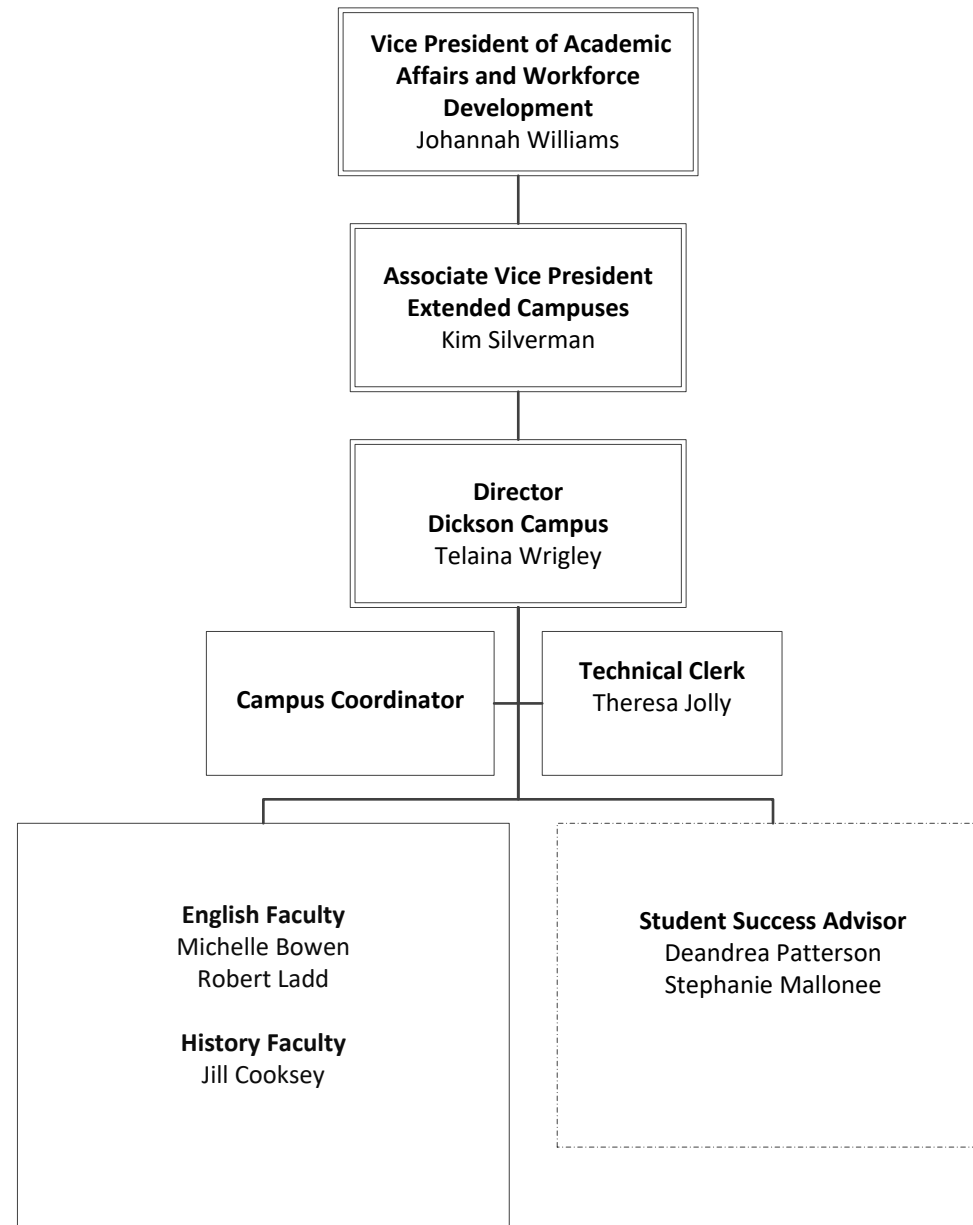


# Clarksville Campus

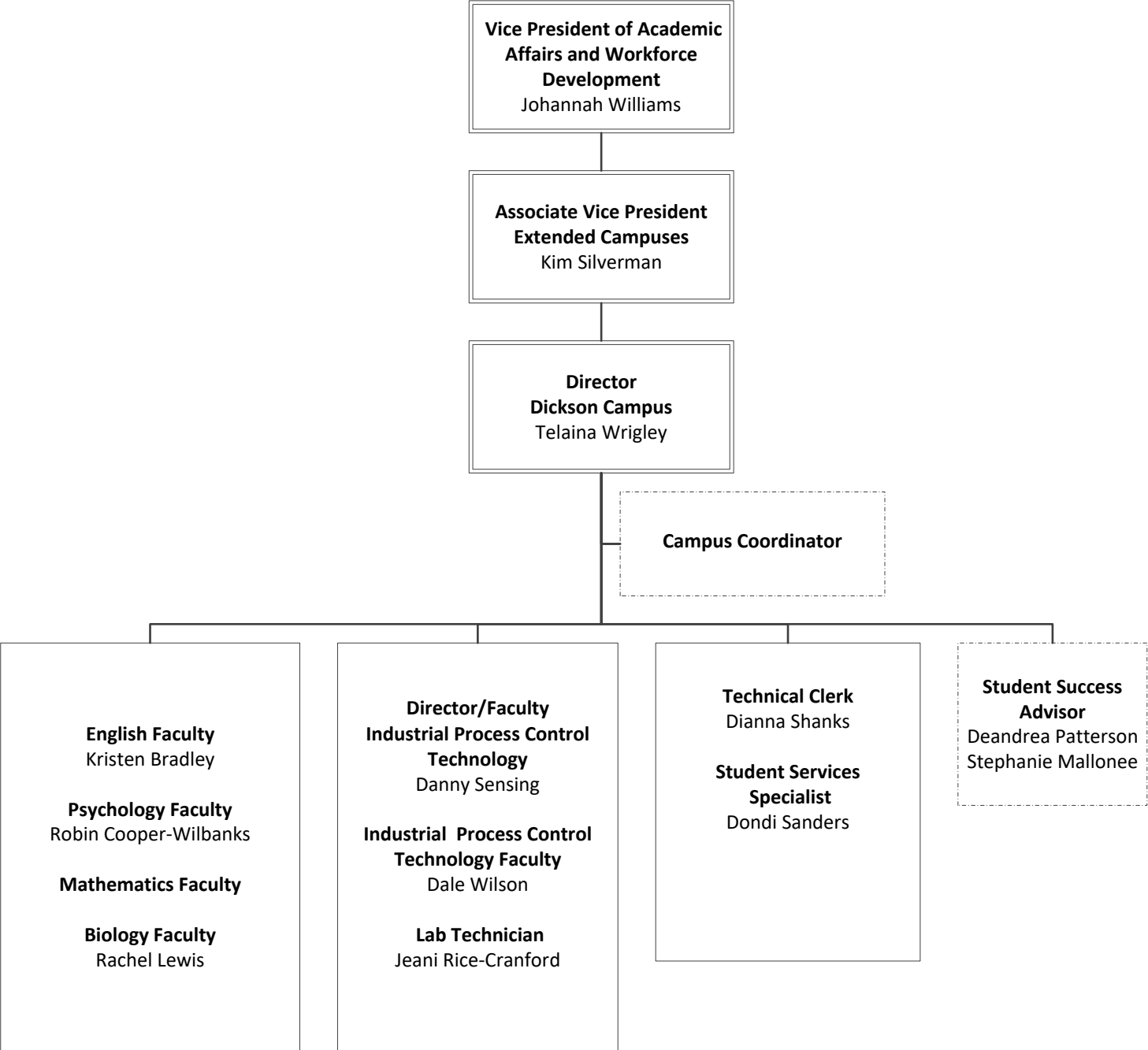




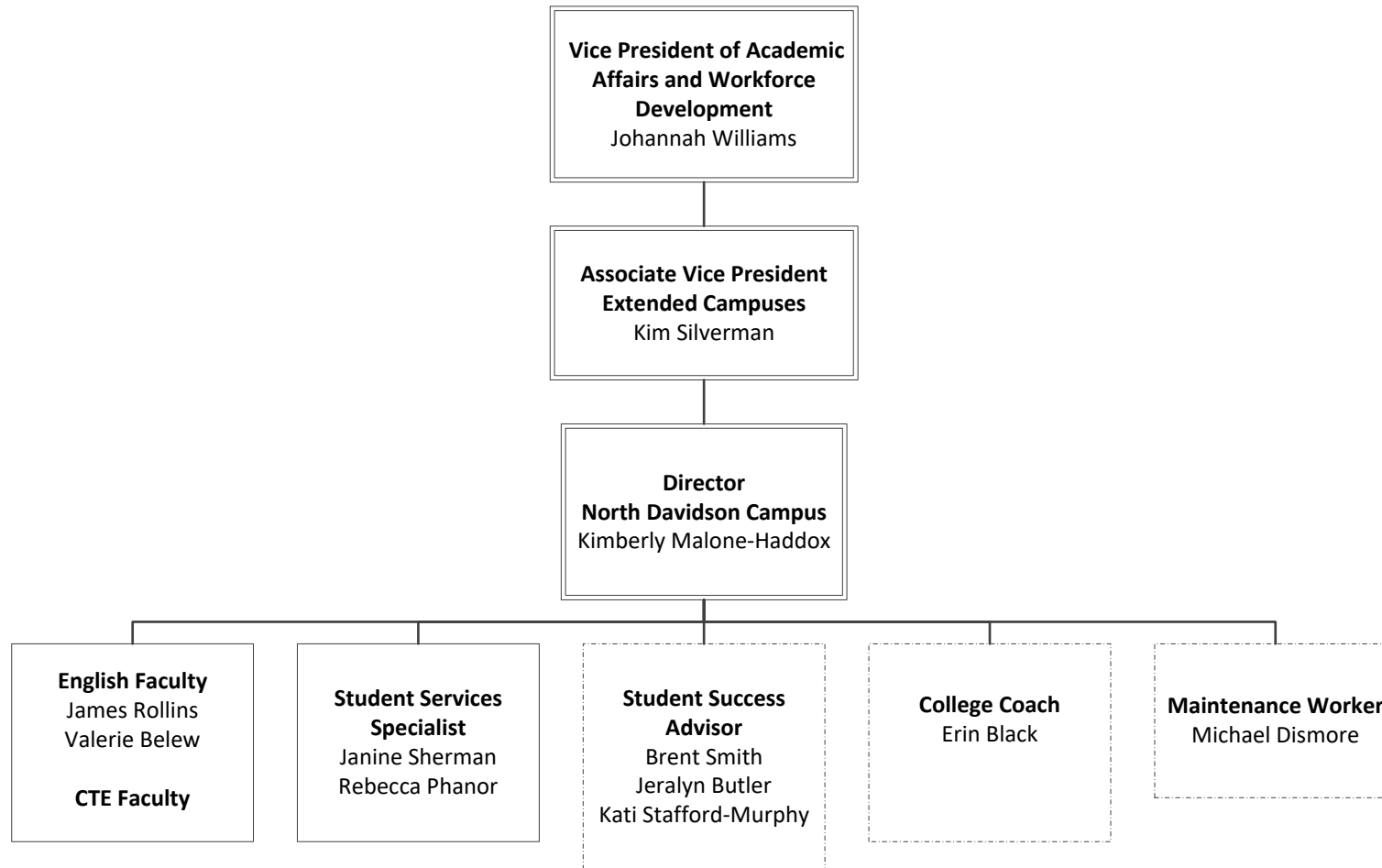
# Dickson Campus



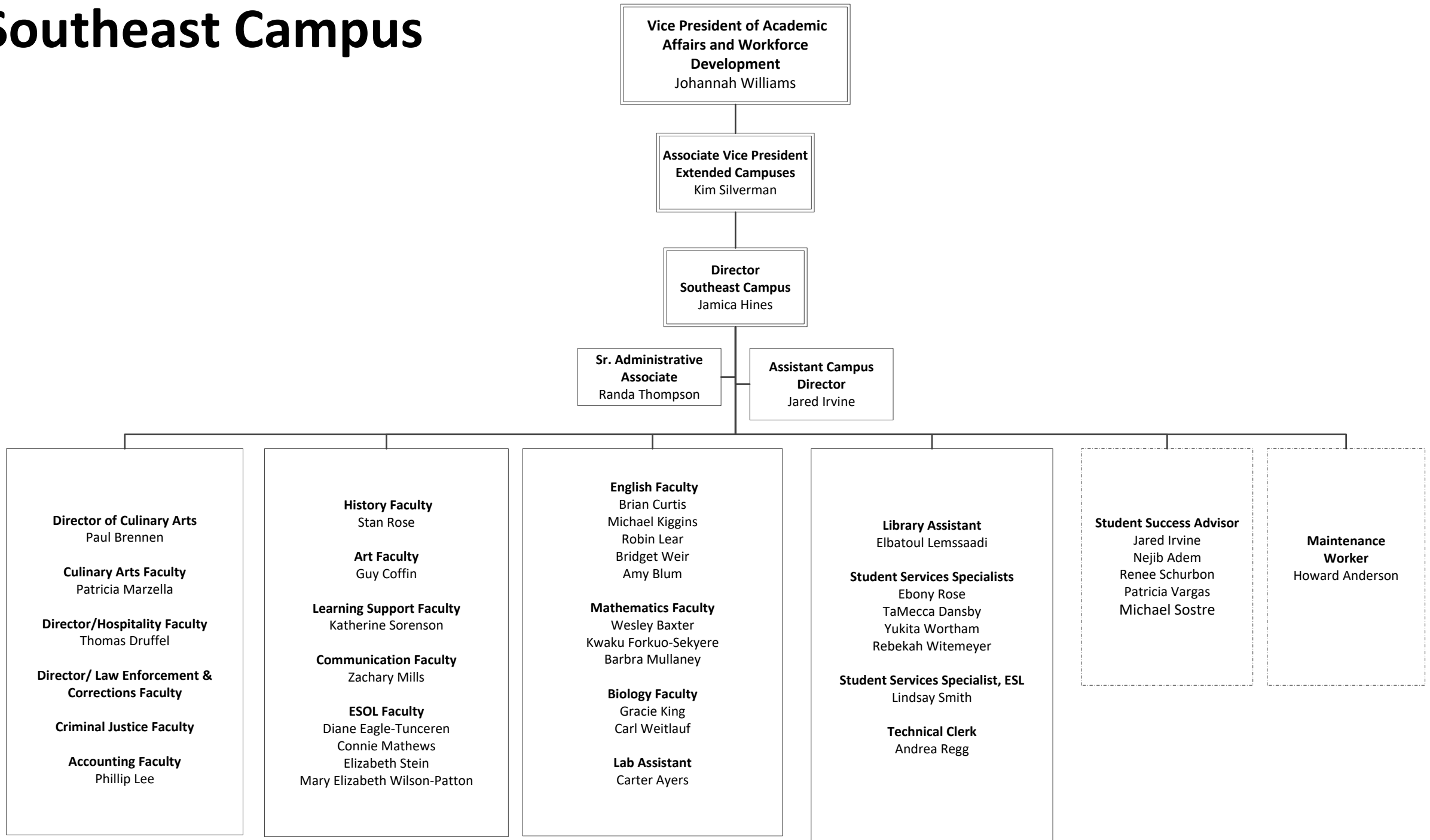
# Humphreys County Campus



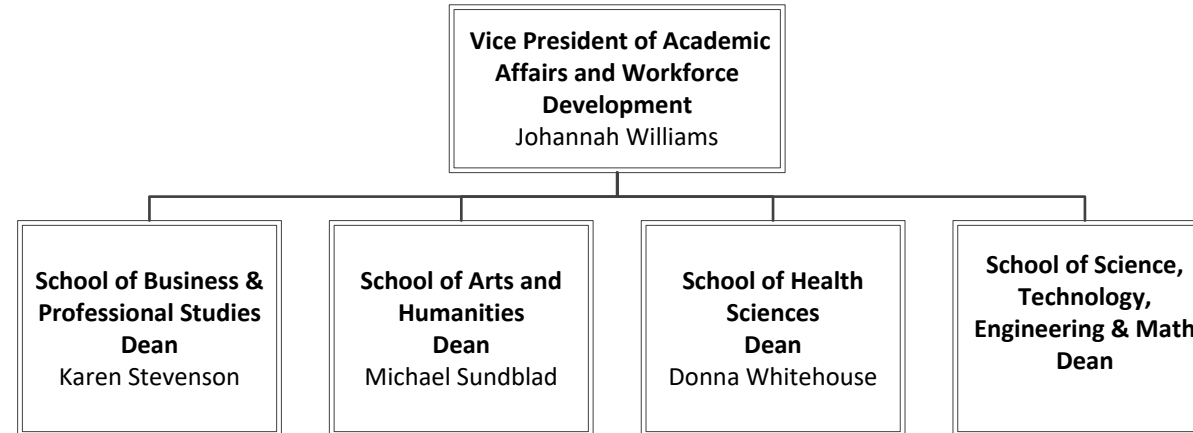
# North Davidson Campus



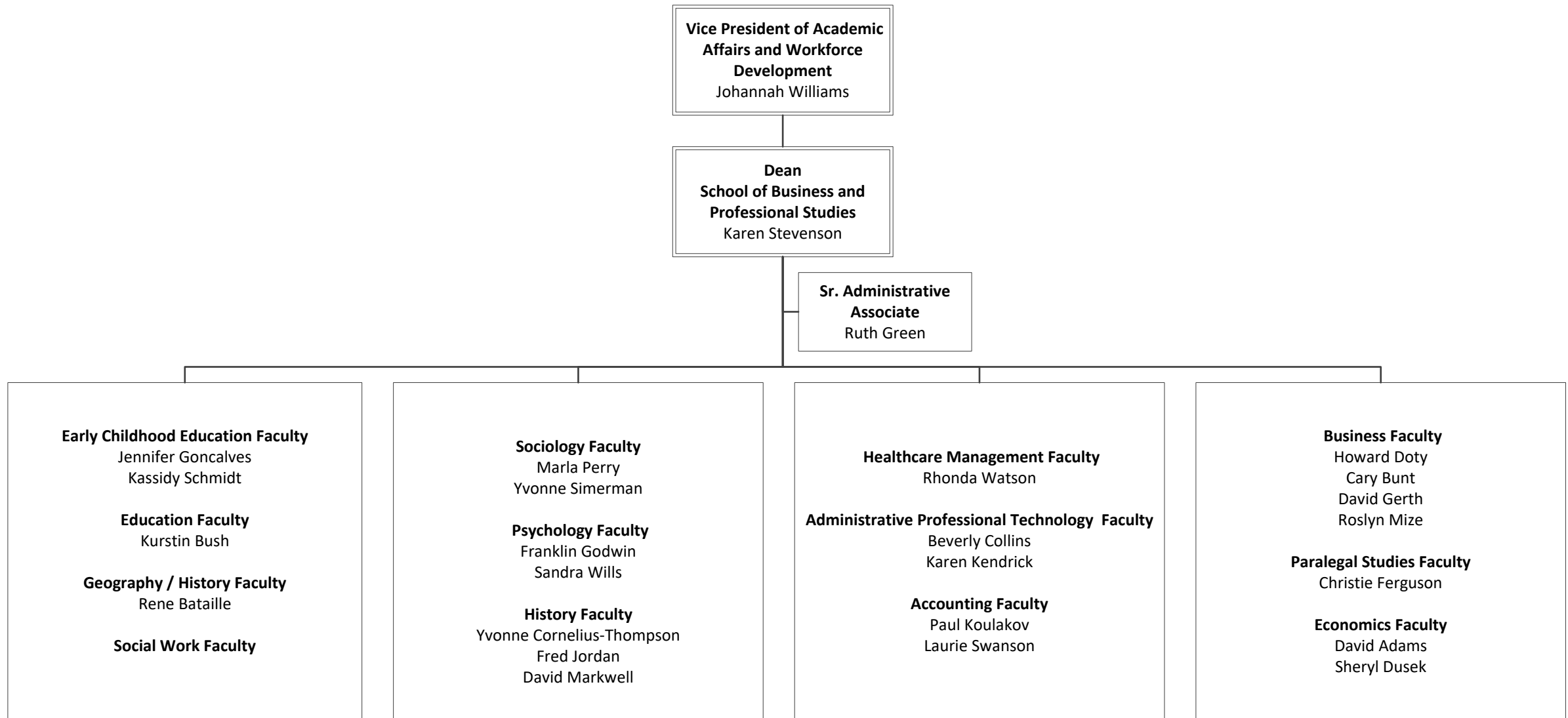
# Southeast Campus



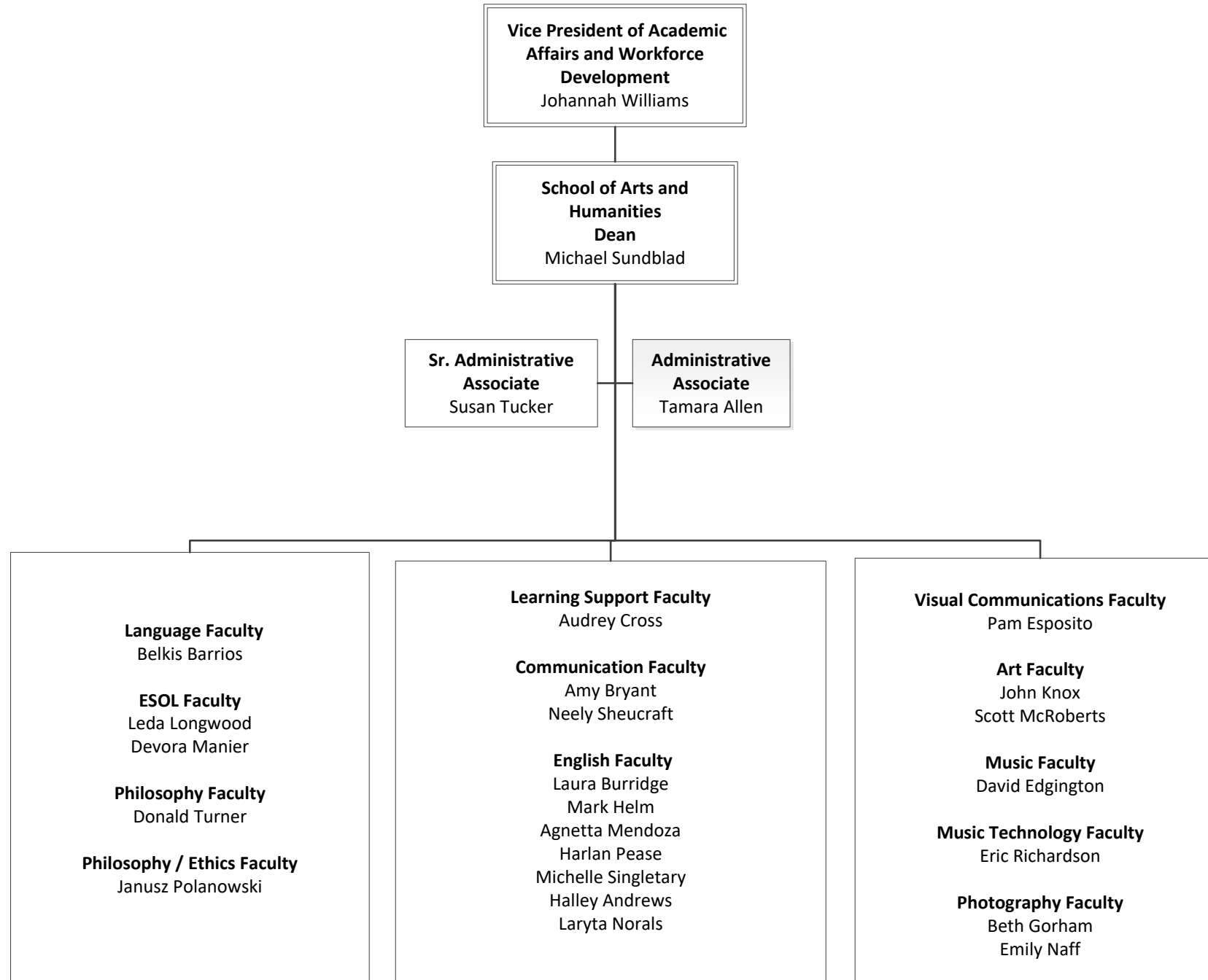
# Academic Divisions



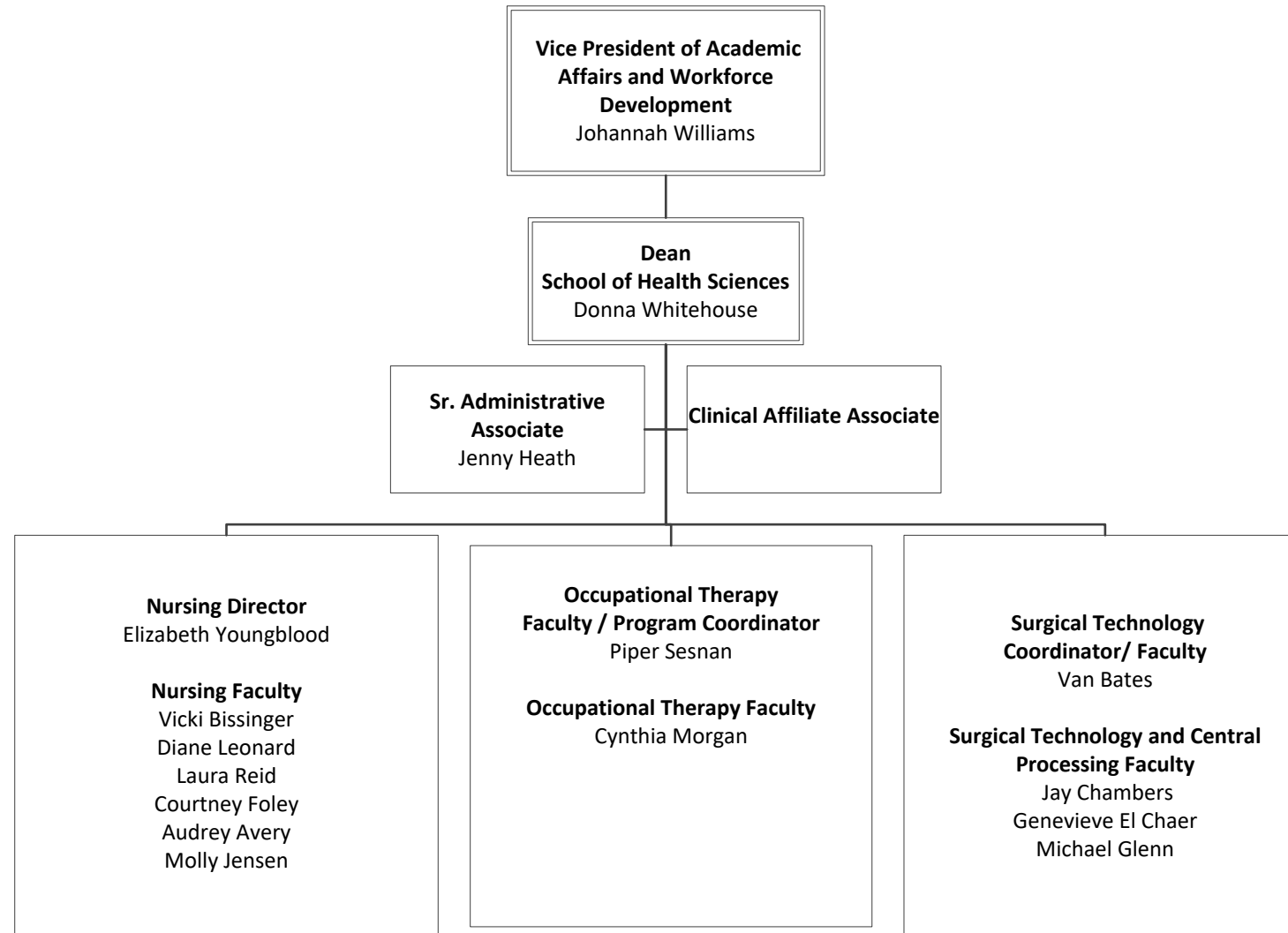
# School of Business and Professional Studies



# School of Arts and Humanities



# School of Health Sciences





# School of Science, Technology, Engineering & Math

