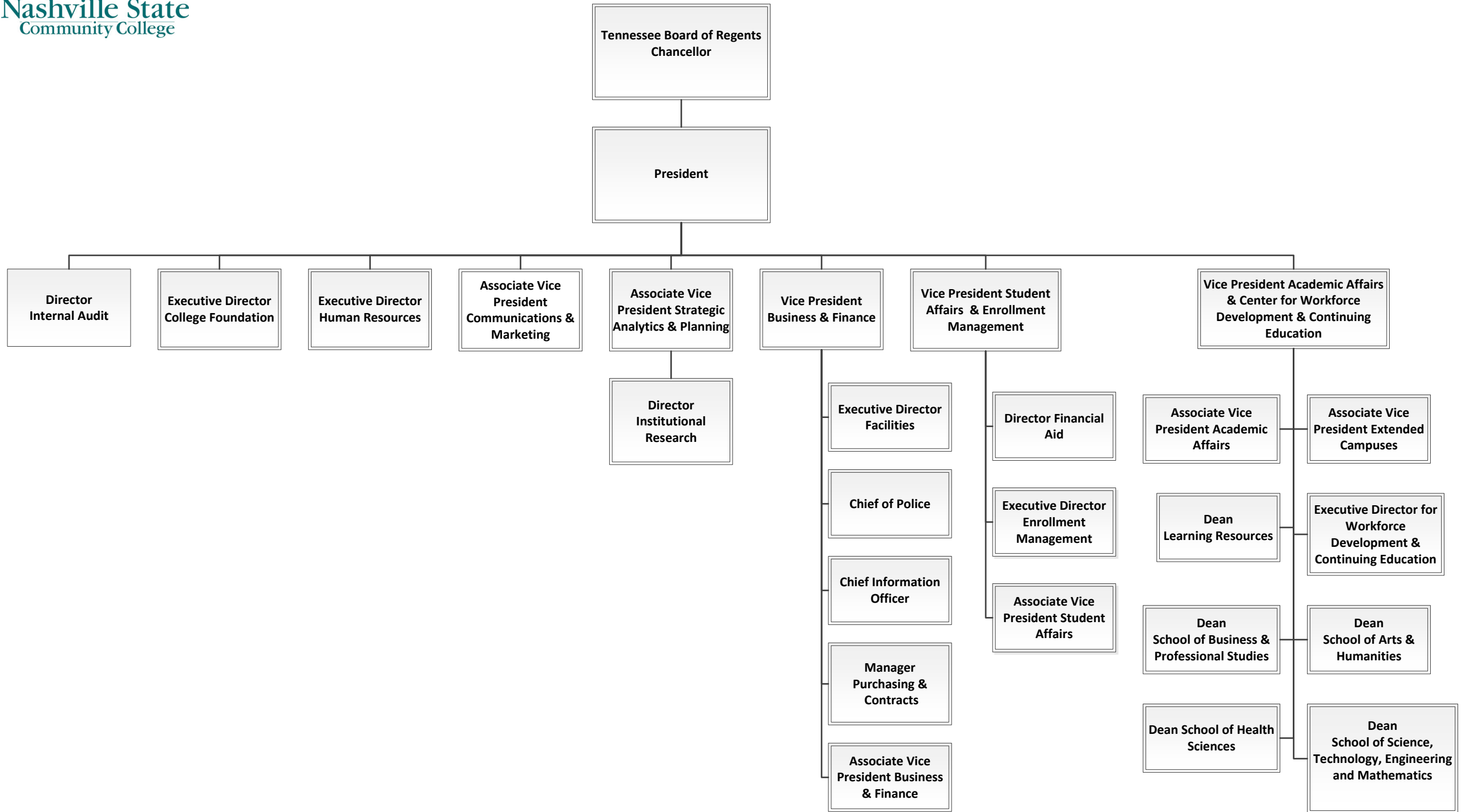


# NASHVILLE STATE COMMUNITY COLLEGE ORGANIZATIONAL CHART



# PRESIDENT

## **President's Office**

Office of the President

Office of Internal Audit

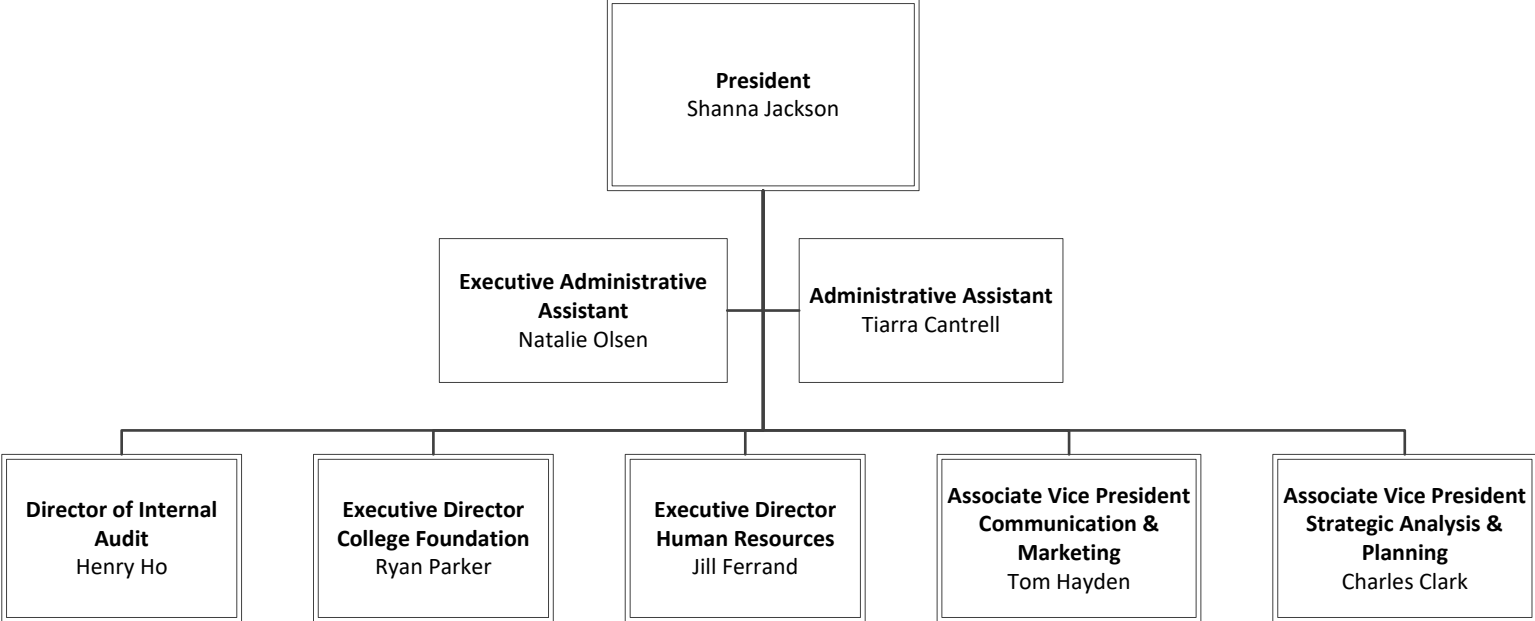
College Foundation

Office of Human Resources

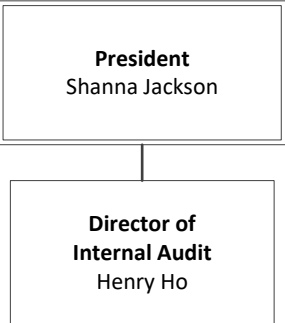
Office of Communication & Marketing

Office of Strategic Analytics & Planning

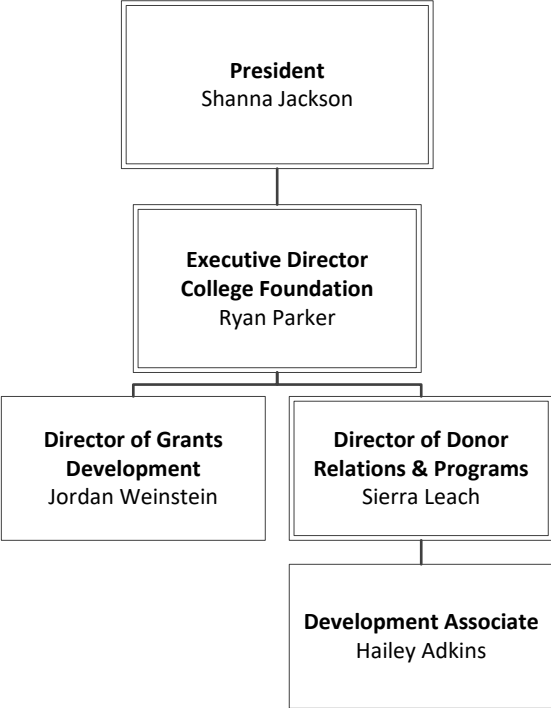
# Office of the President



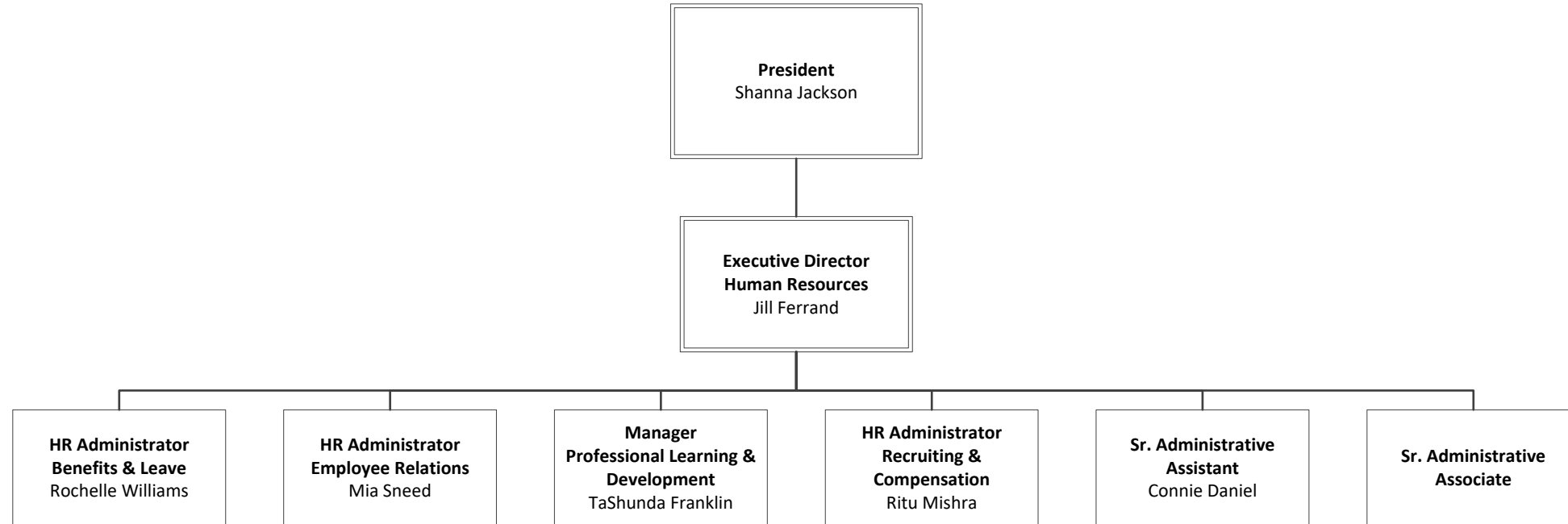
# Office of Internal Audit



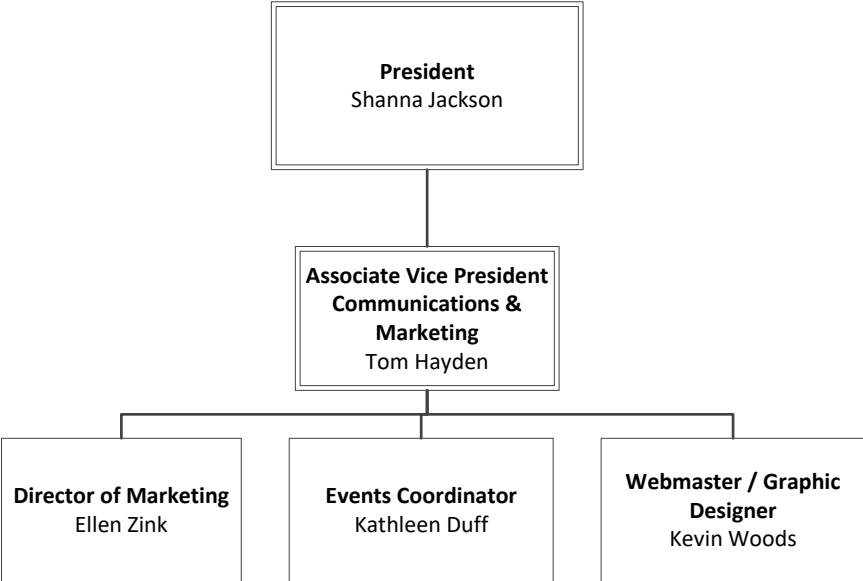
# College Foundation



# Office of Human Resources



# Office of Communications & Marketing



# Office of Strategic Analytics & Planning



# Vice President of Business and Finance

## Vice President of Business & Finance

Office of the Vice President of Business & Finance

Office of Facilities Management

Office of Police and Security

Office of Technology Services

Office of Purchasing & Contracts

Office of the Associate Vice President of Business and Finance

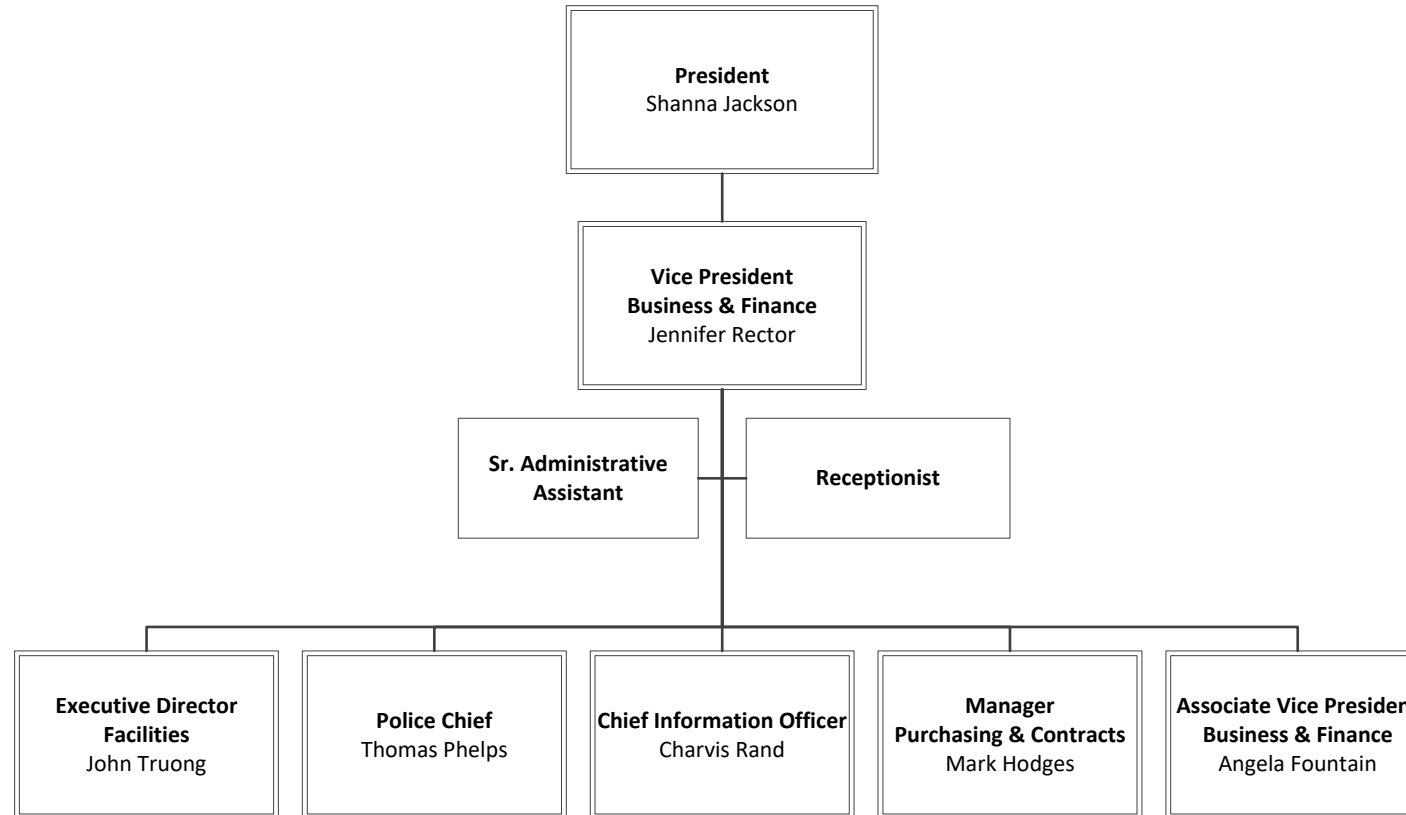
Office of Accounting & External Reporting

Office of Payroll

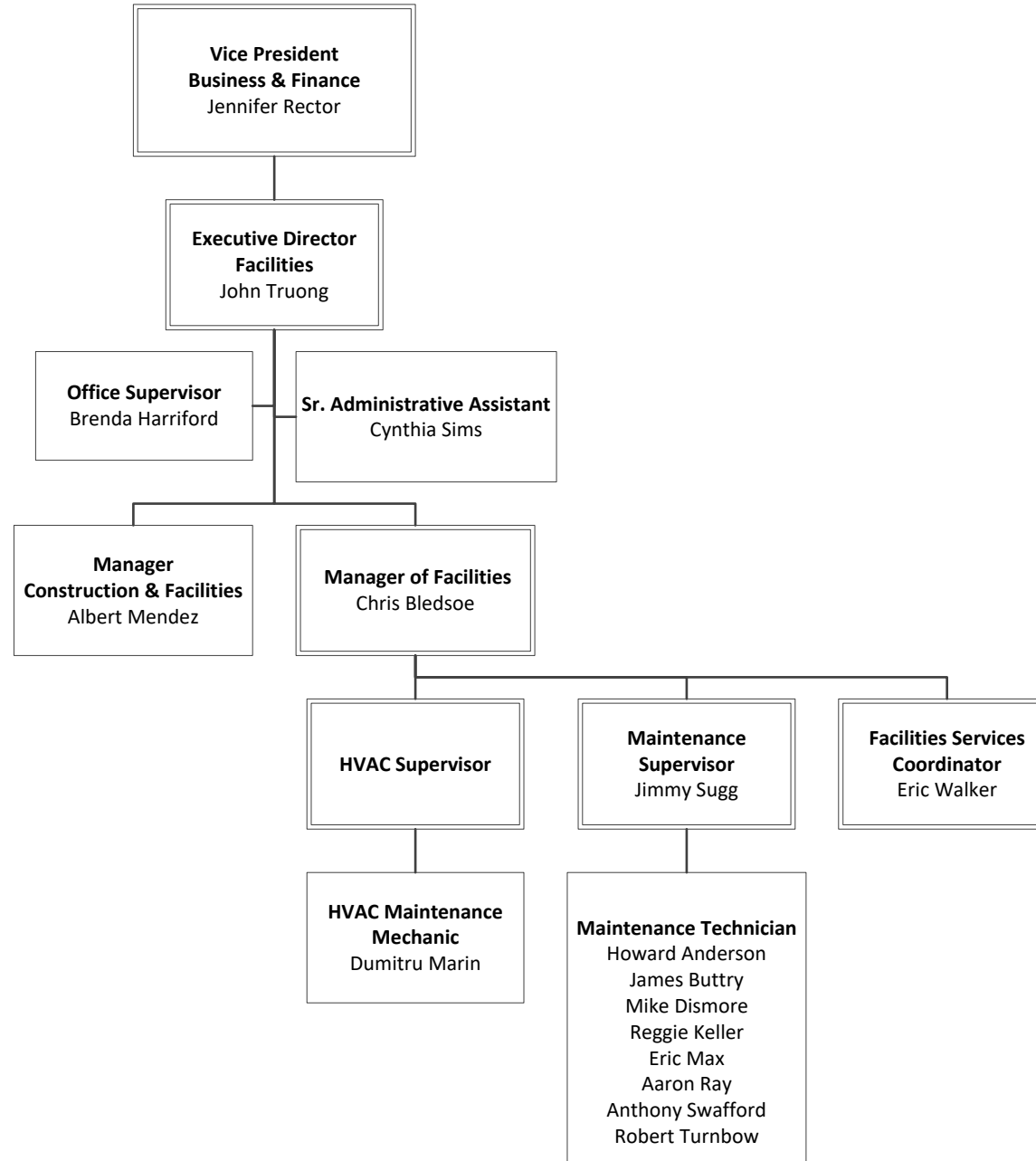
Office of Budget & Travel

Office of Student Billing & Account Services

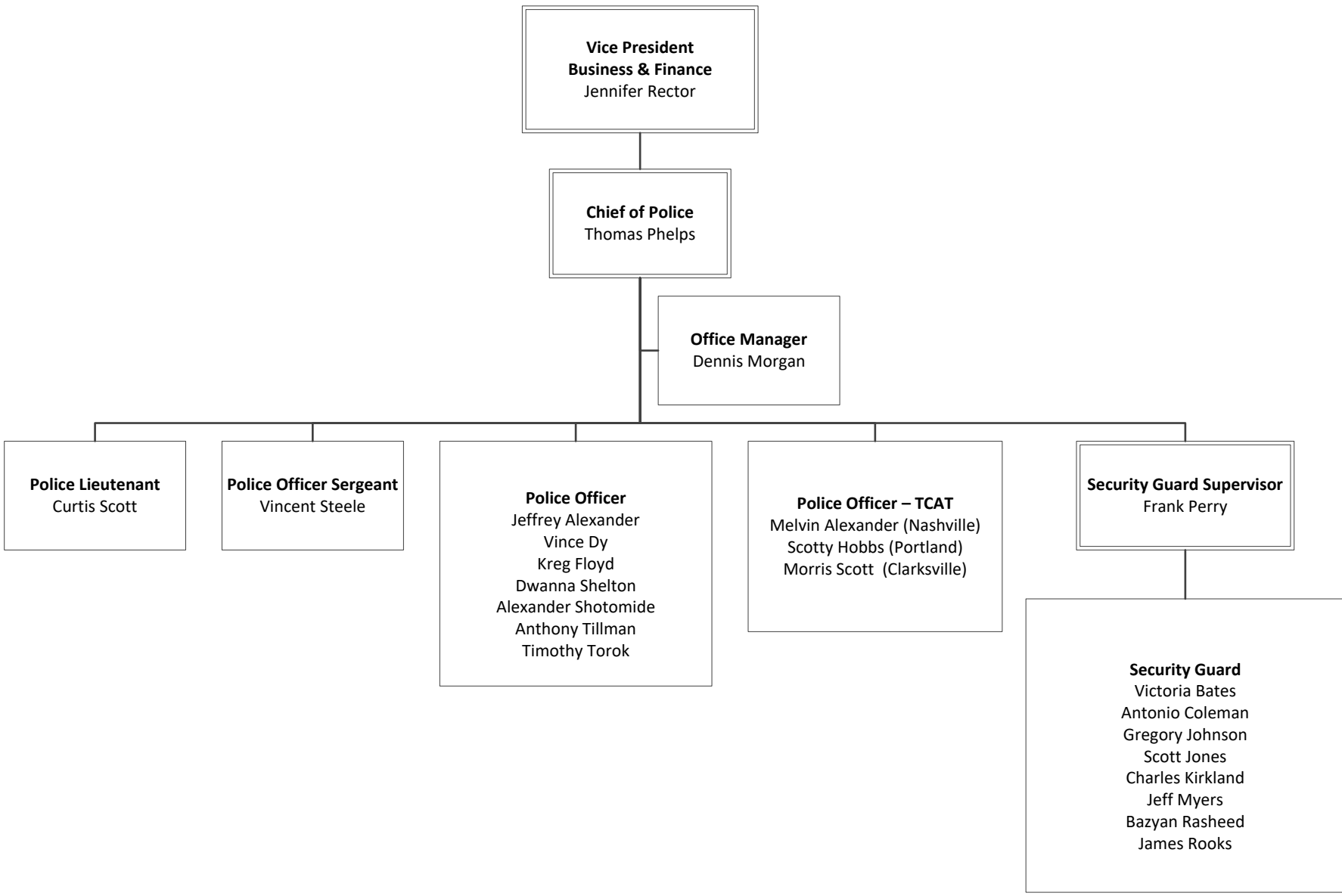
# Office of the Vice President of Business & Finance



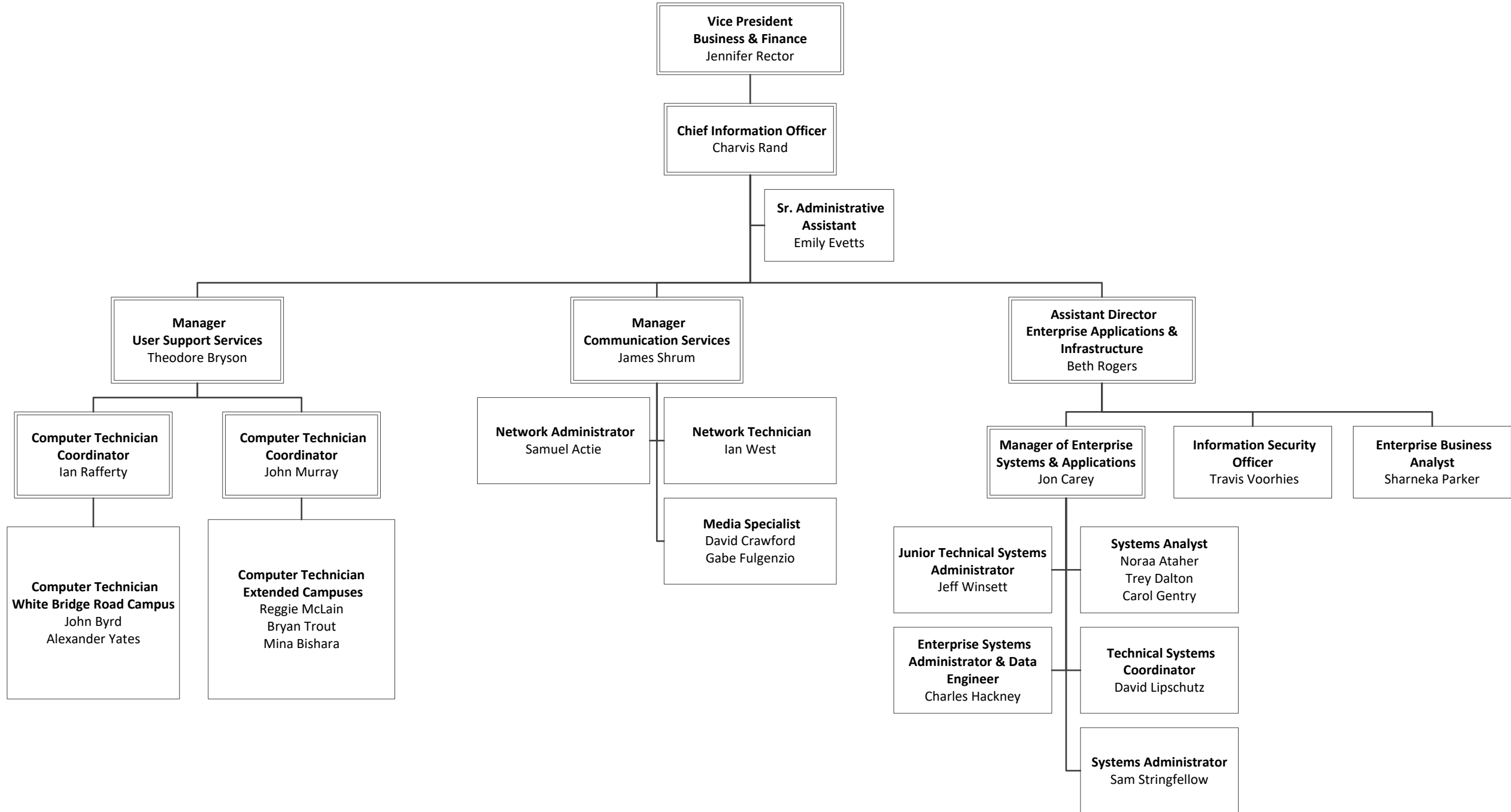
# Office of Facilities Management



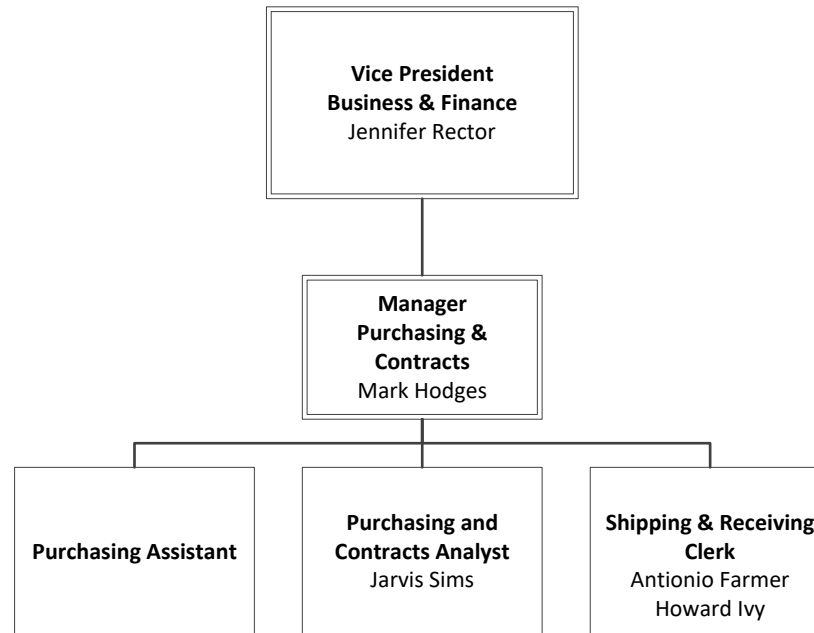
# Office of Police & Security



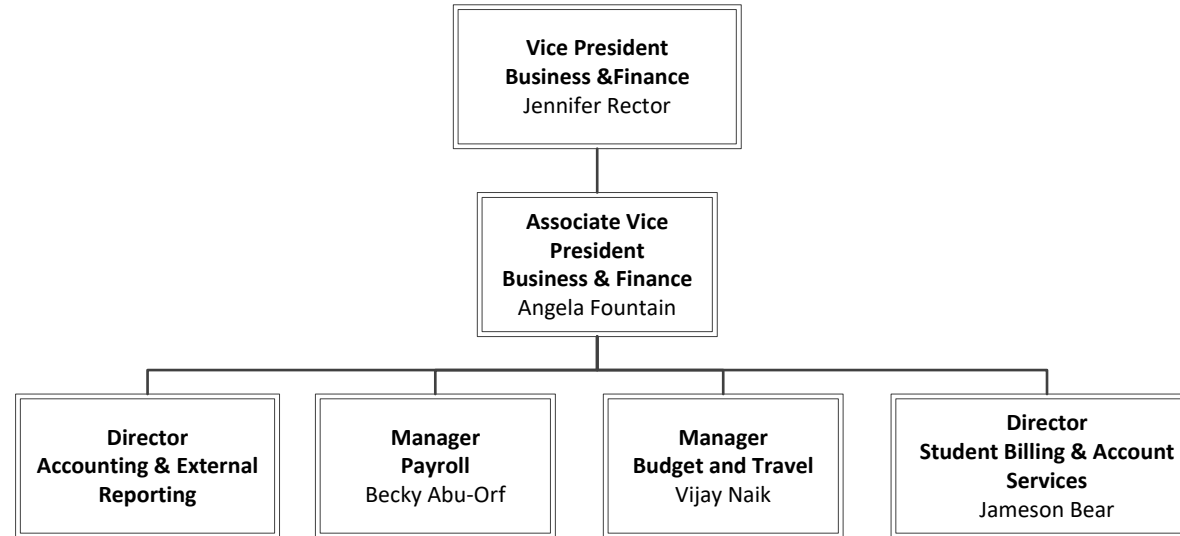
# Office of Technology Services



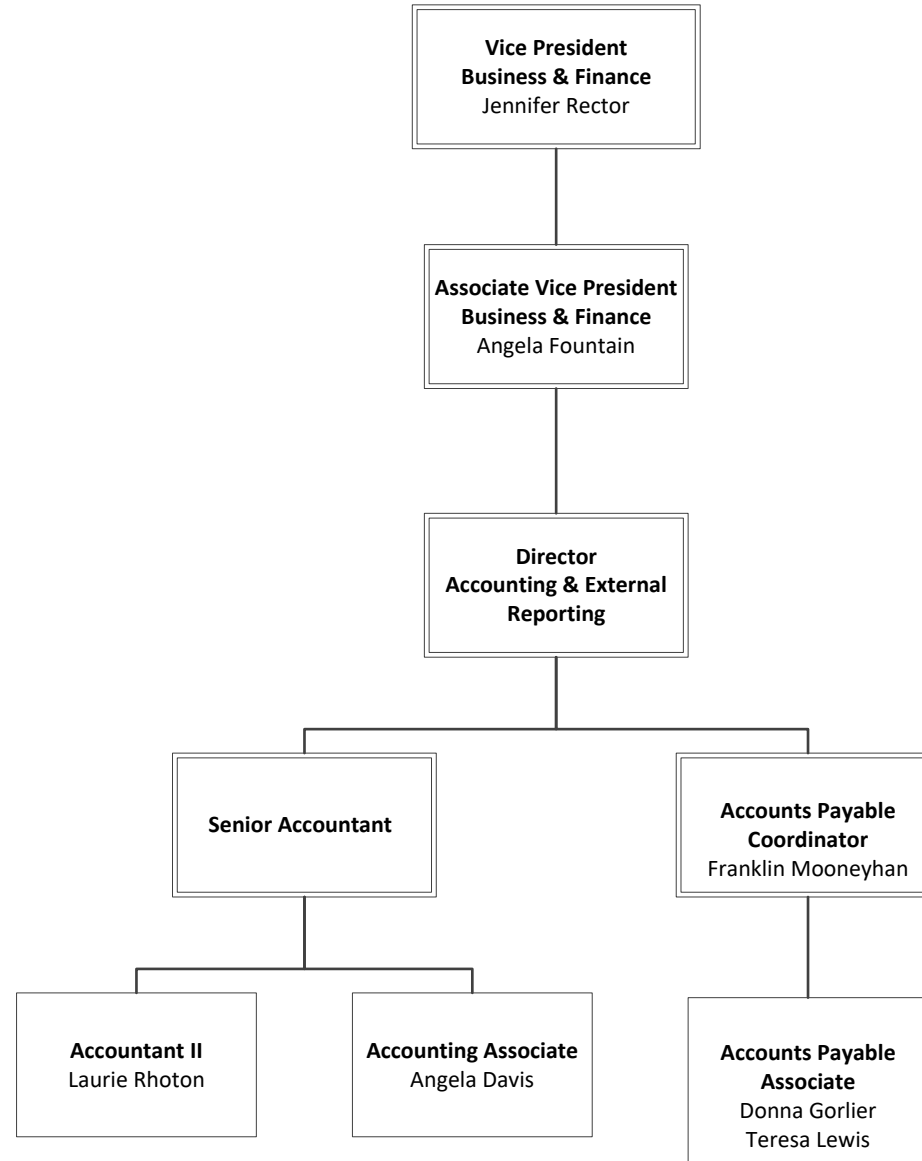
# Office of Purchasing & Contracts



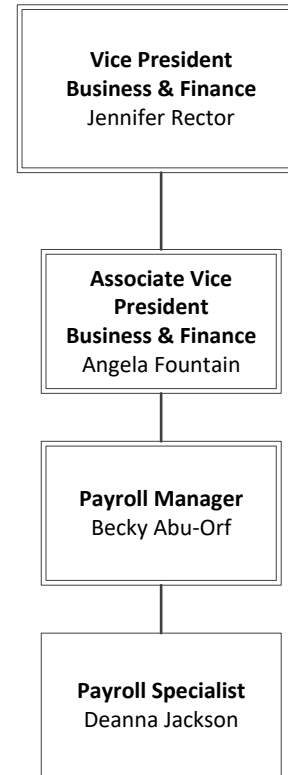
# Office of the Associate Vice President of Business & Finance



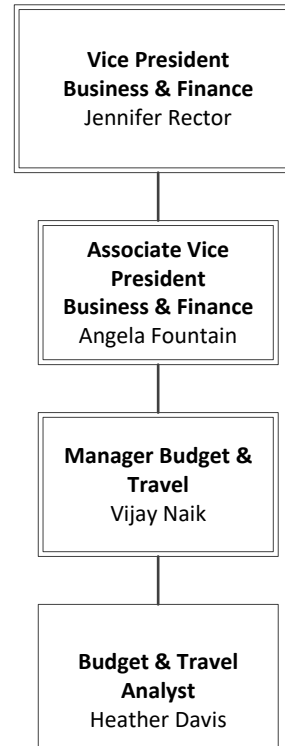
# Office of Accounting & External Reporting



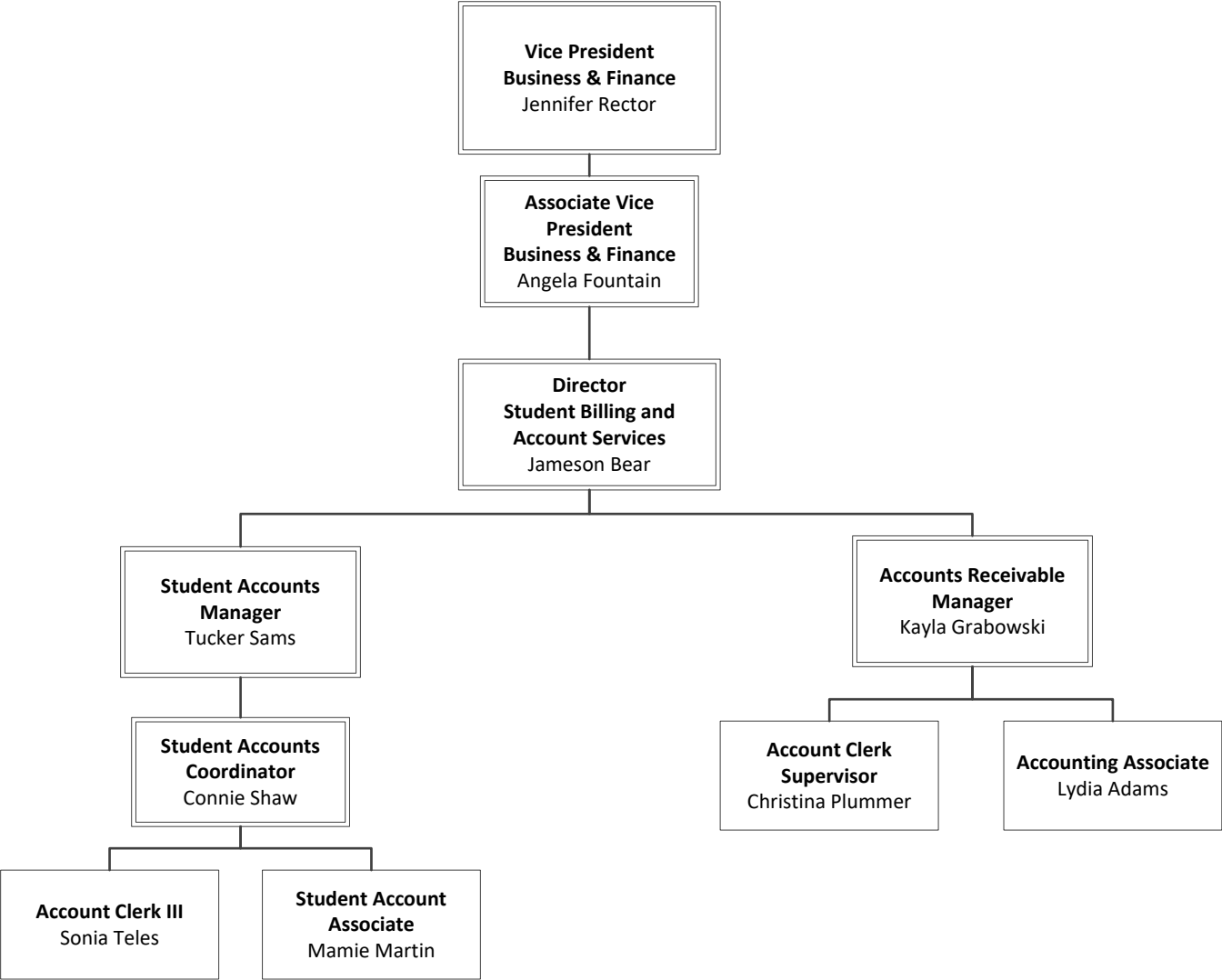
# Office of Payroll



# Office of Budget & Travel



# Office of Student Billing & Account Services



# Vice President of Student Affairs & Enrollment Management

## Vice President of Student Affairs & Enrollment Management

Office of the Vice President of Student Affairs and Enrollment Management

Office of Financial Aid

Office of Enrollment Services

- Office of Admissions & Records
- Office of the Welcome Center
- Office of the Testing Center

Office of the Associate Vice President of Student Affairs

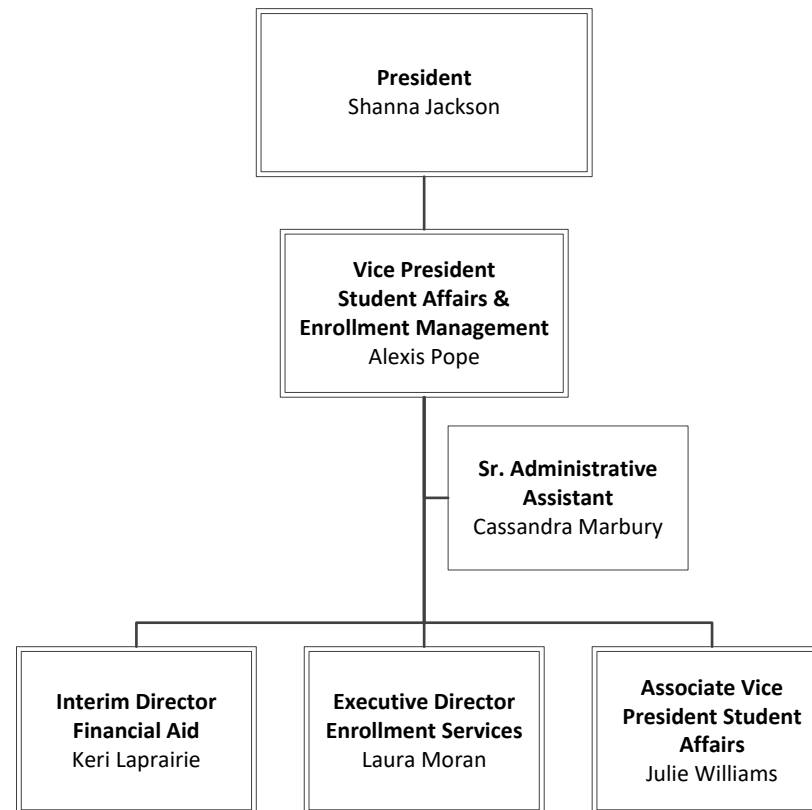
Office of the Student Success Center

Office of Career and Transfer Center

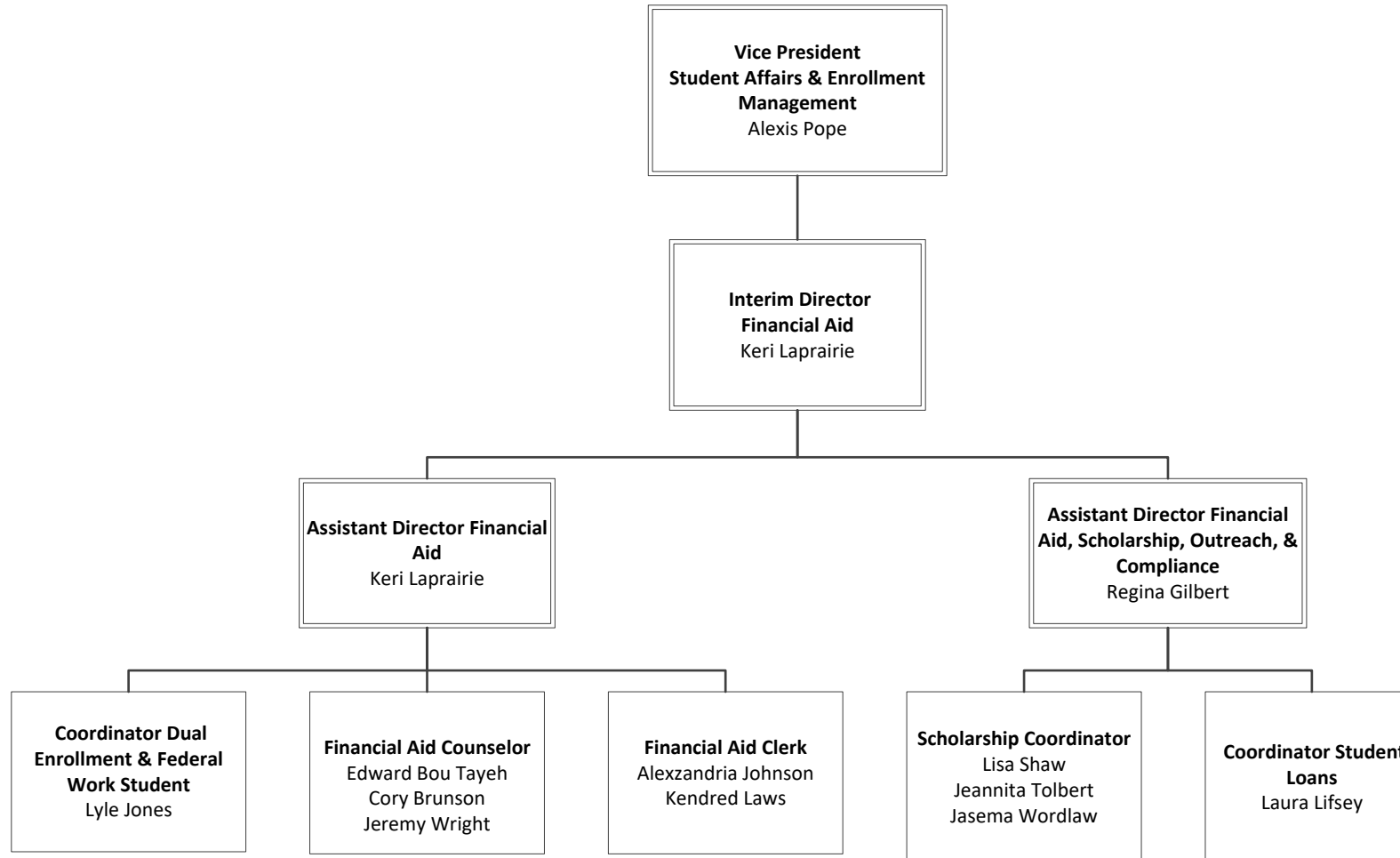
Office of the Access Center

Office of Student Life

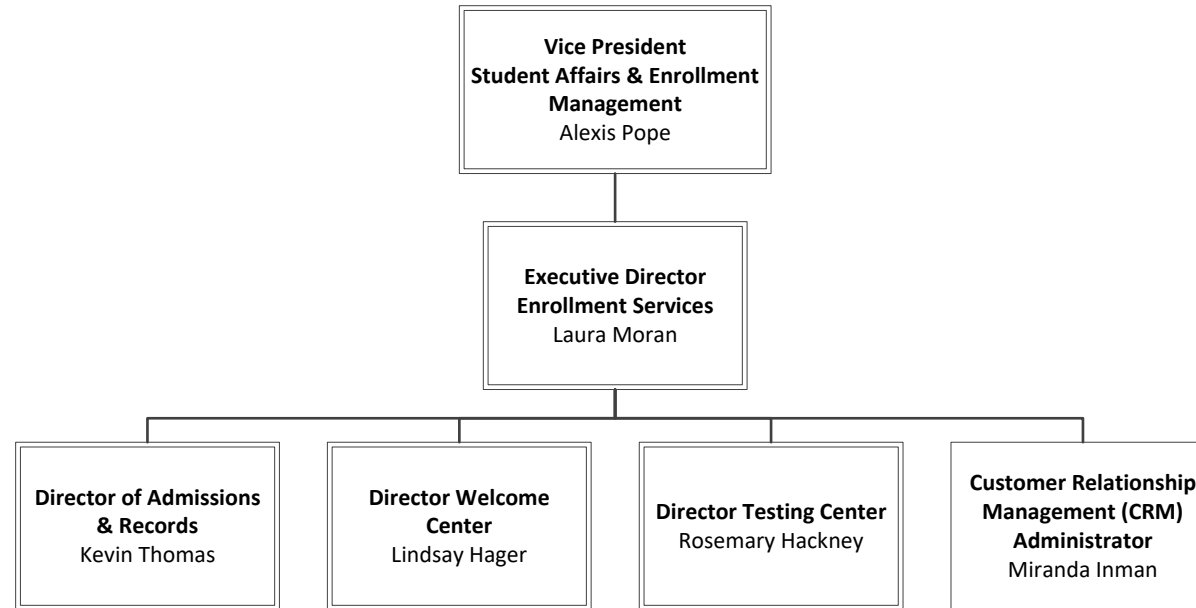
# Office of the Vice President of Student Affairs & Enrollment Management



# Office of Financial Aid



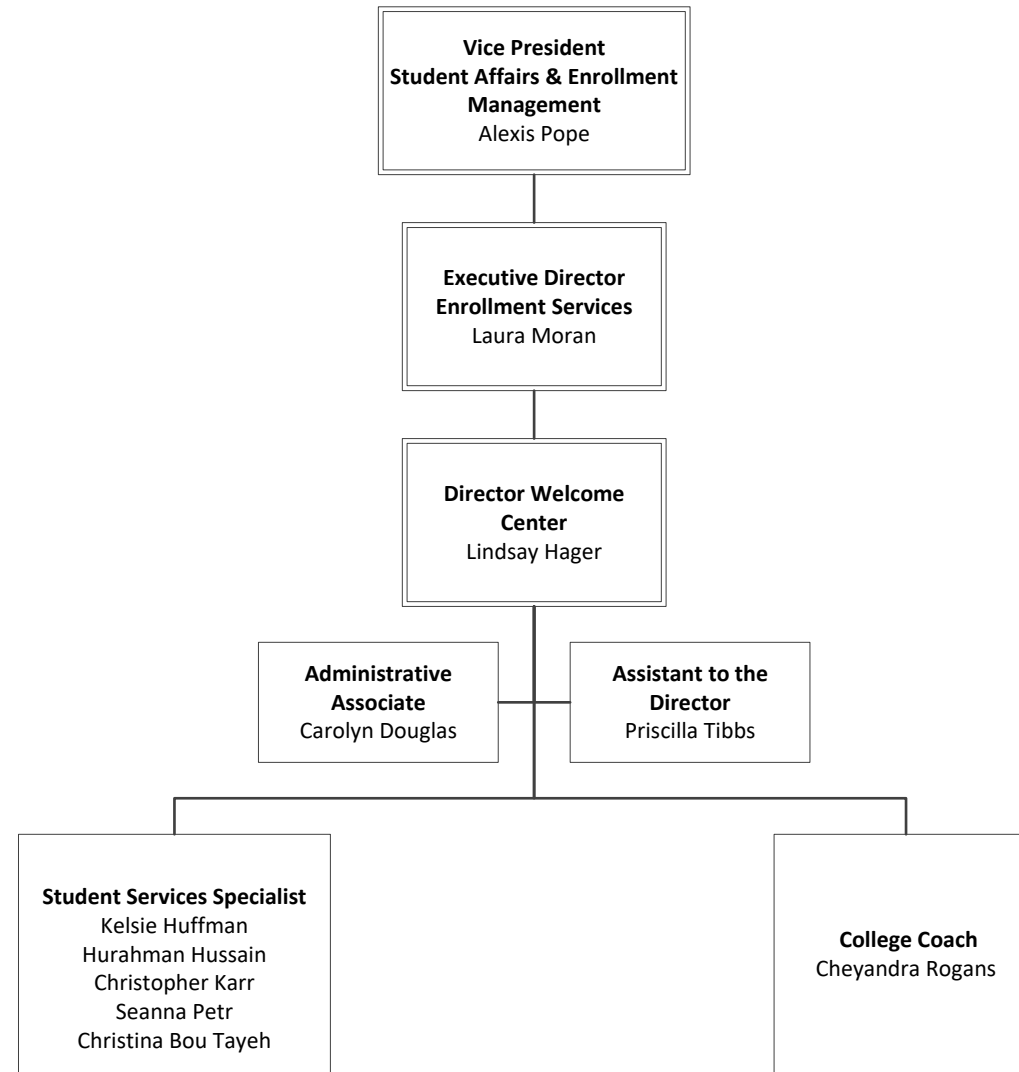
# Office of Enrollment Services



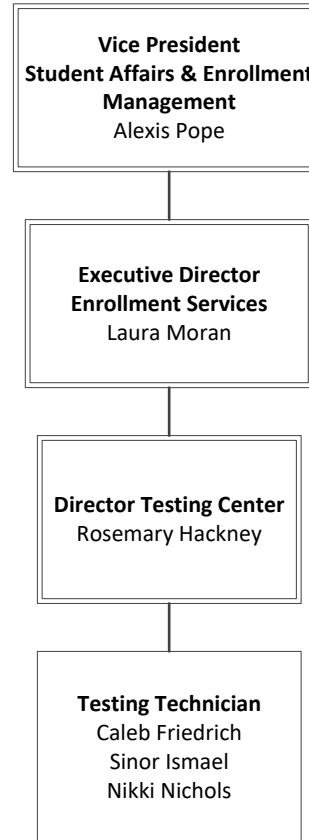
# Office of Admissions & Records



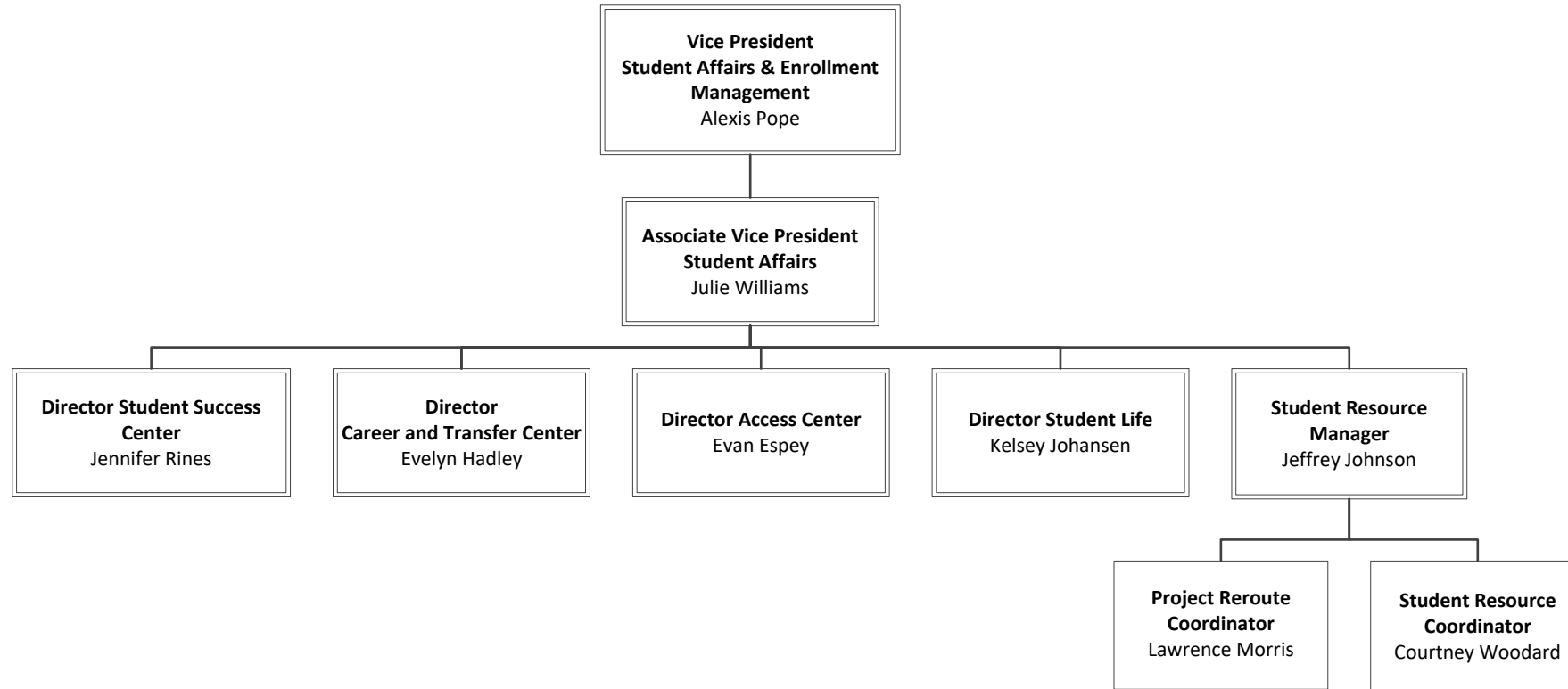
# Office of the Welcome Center



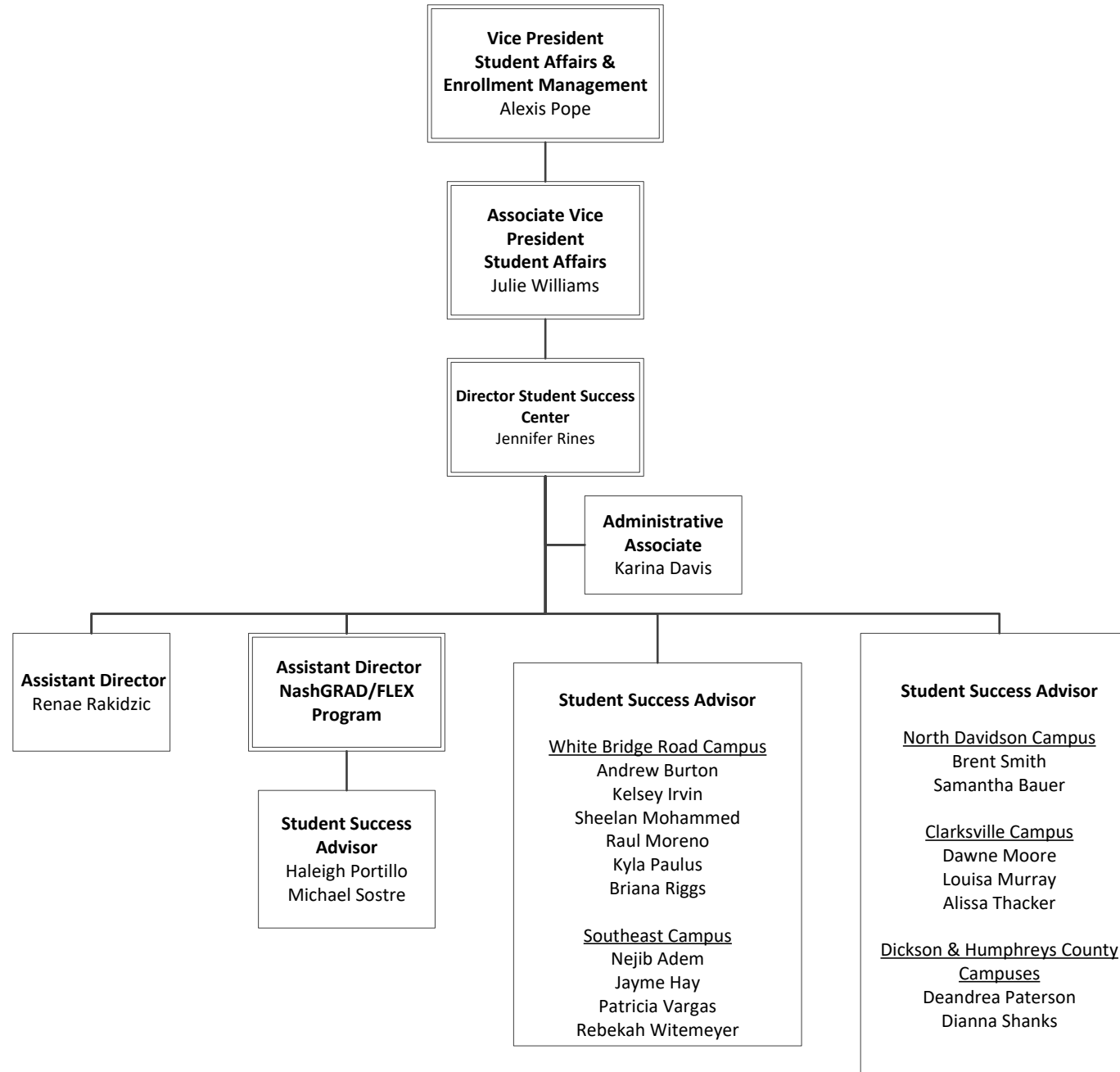
# Office of the Testing Center



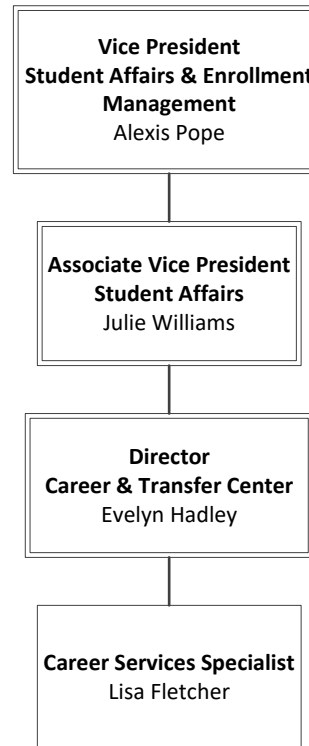
# Office of the Associate Vice President of Student Affairs



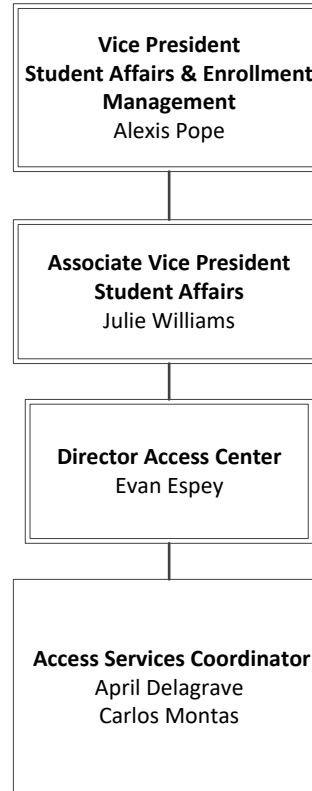
# Office of the Student Success Center



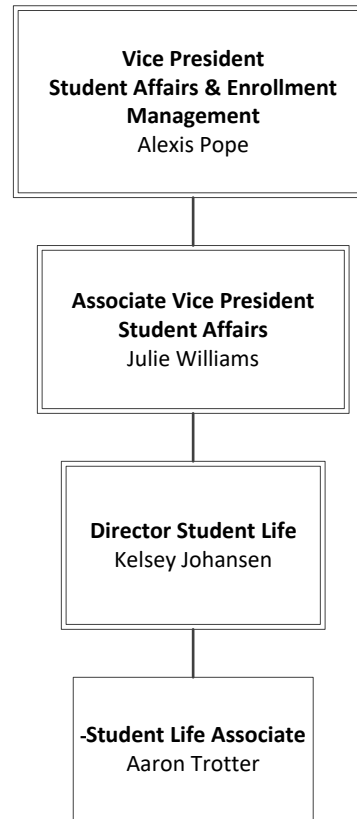
# Office of the Career and Transfer Center



# Office of the Access Center



# Office of Student Life



# Vice President of Academic Affairs

## Vice President for Academic Affairs & Workforce Development/Continuing Education

Office of the Vice President of Academic Affairs

Office of the Associate Vice President Academic Affairs

- Office of Online Learning and Teaching Innovation

Office of the Center for Workforce Development and Continuing Education

Office of Learning Resources

School of Arts and Humanities

School of Business and Professional Studies

School of Health Sciences

School of Science, Technology, Engineering and Mathematics

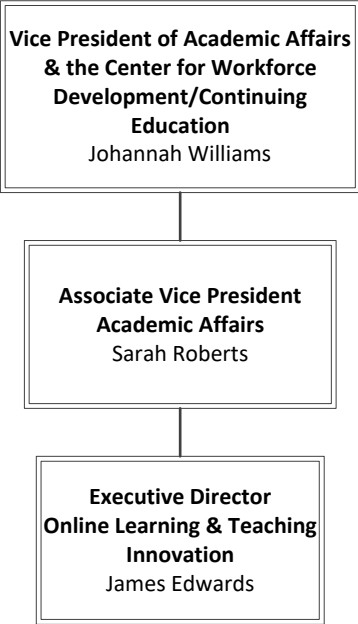
Office of the Associate Vice President Extended Campuses

- Office of High School Initiatives & Dual Enrollment
- Clarksville Campus
- Dickson Campus
- Humphreys County Campus
- North Davidson Campus
- Southeast Campus

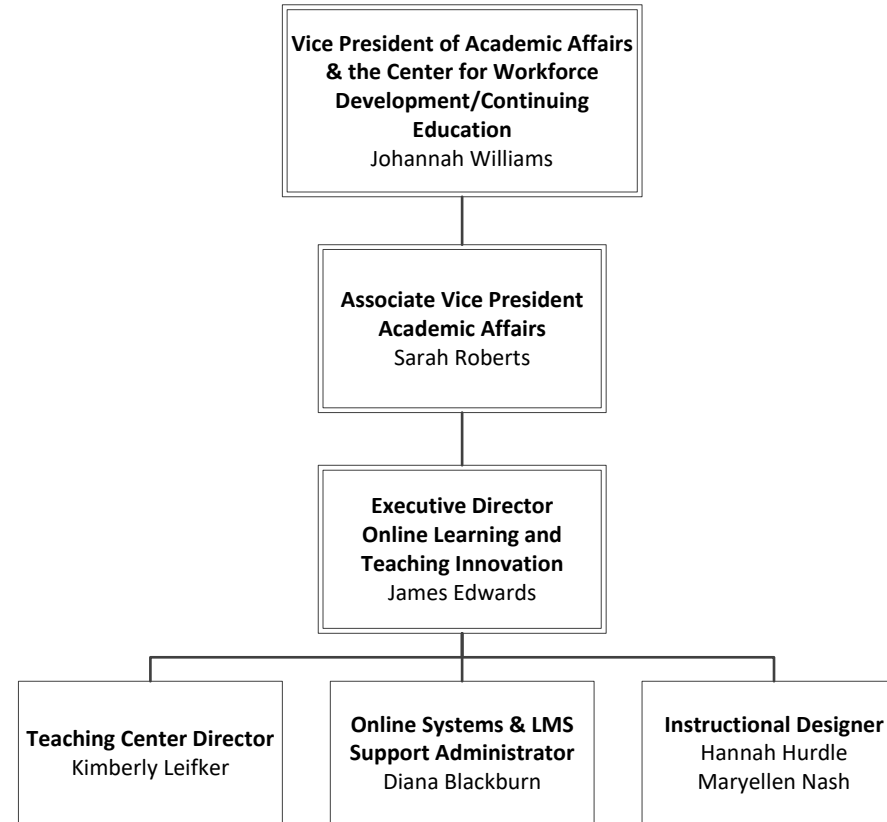
# Office of the Vice President of Academic Affairs



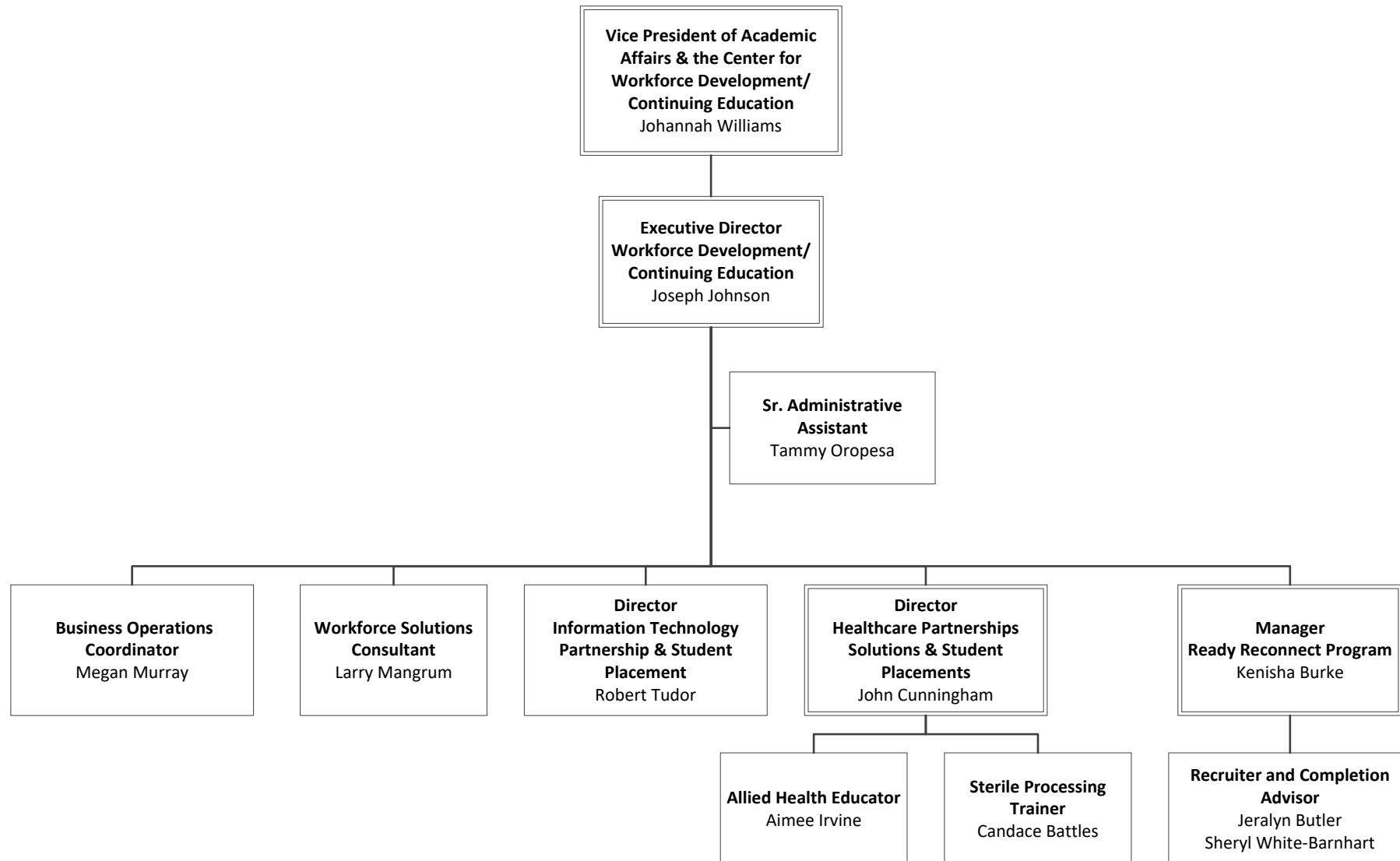
# Office of the Associate Vice President of Academic Affairs



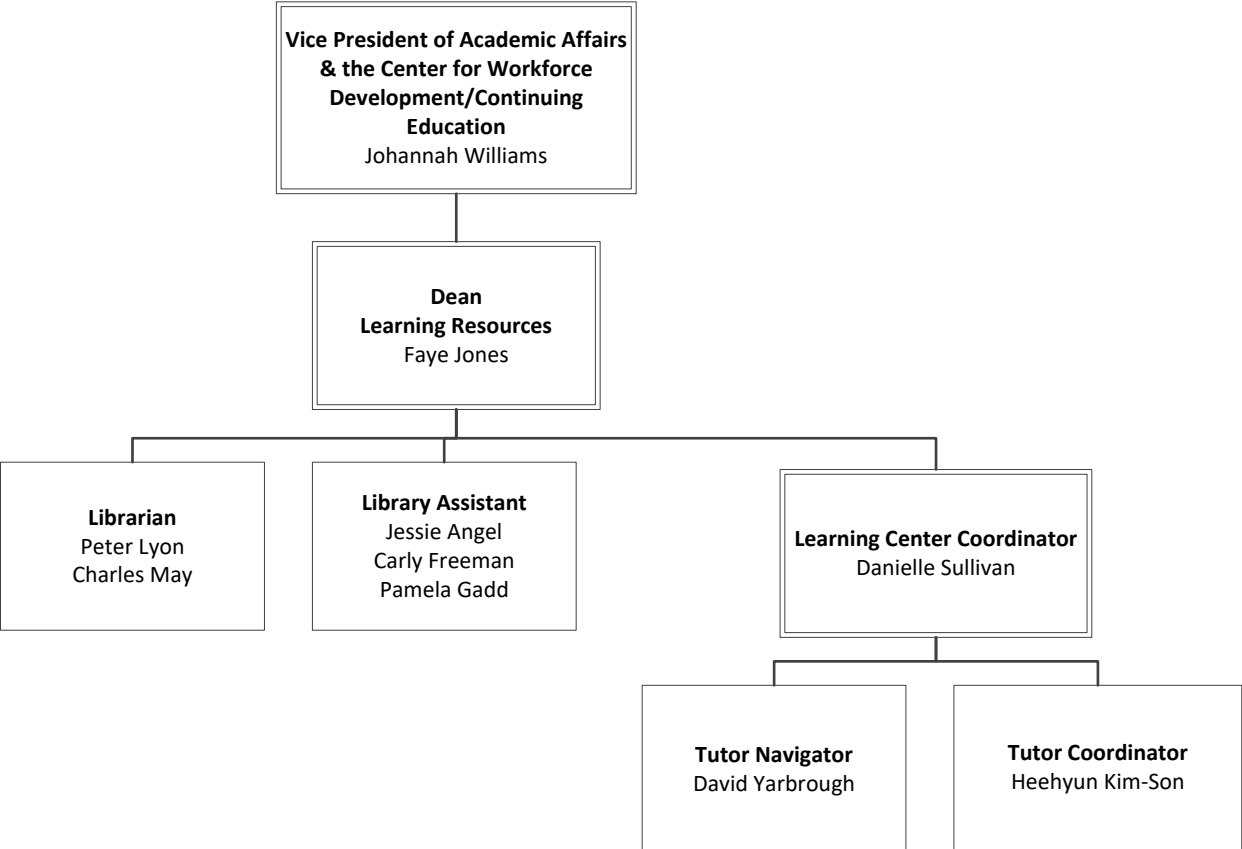
# Office of Online Learning and Teaching Innovation



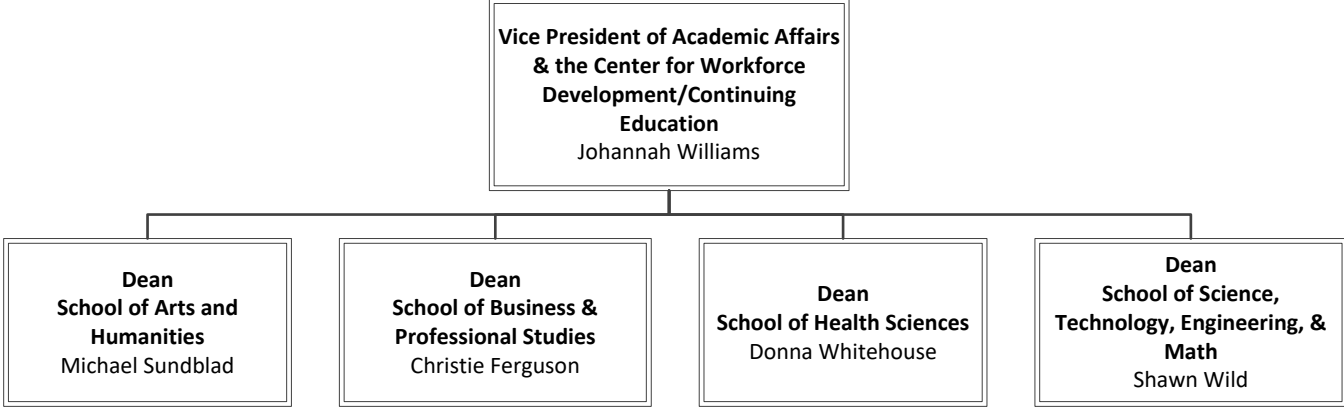
# Office of the Center for Workforce Development & Continuing Education



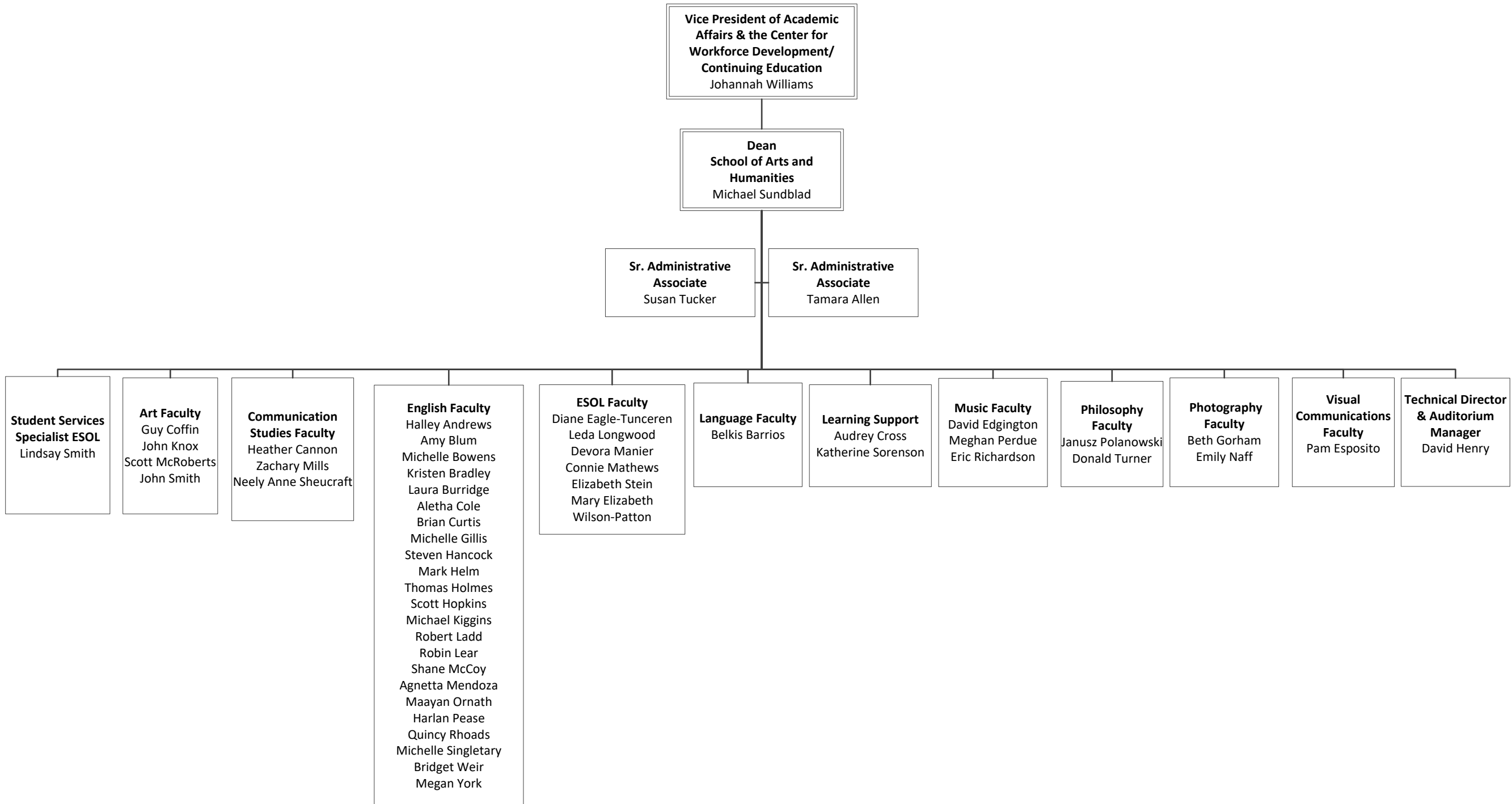
# Office of Learning Resources



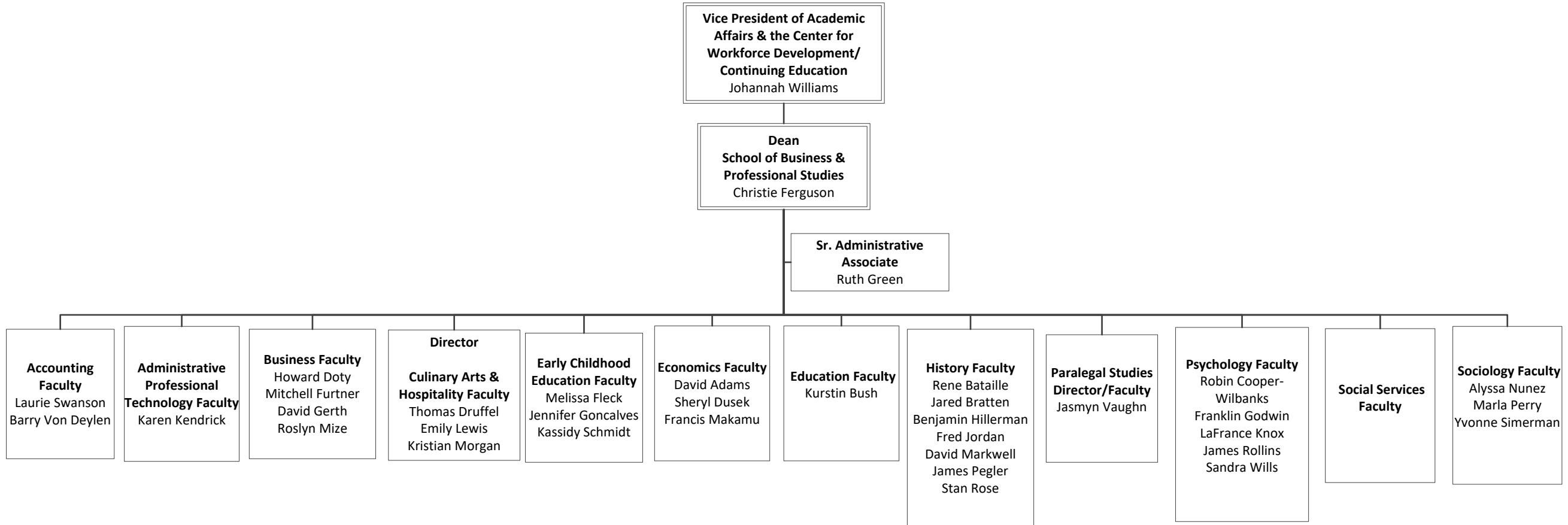
# Academic Divisions



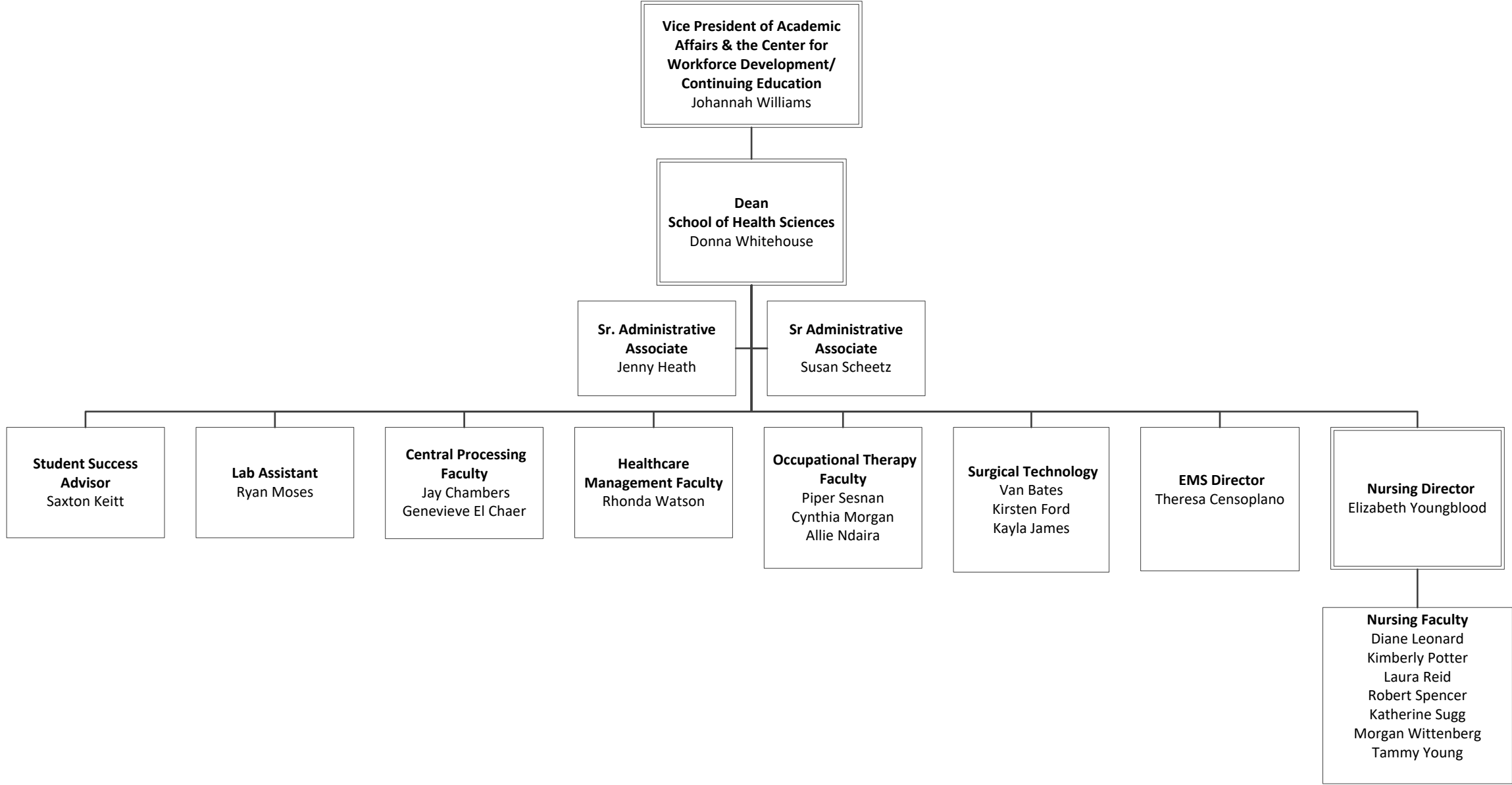
# School of Arts & Humanities



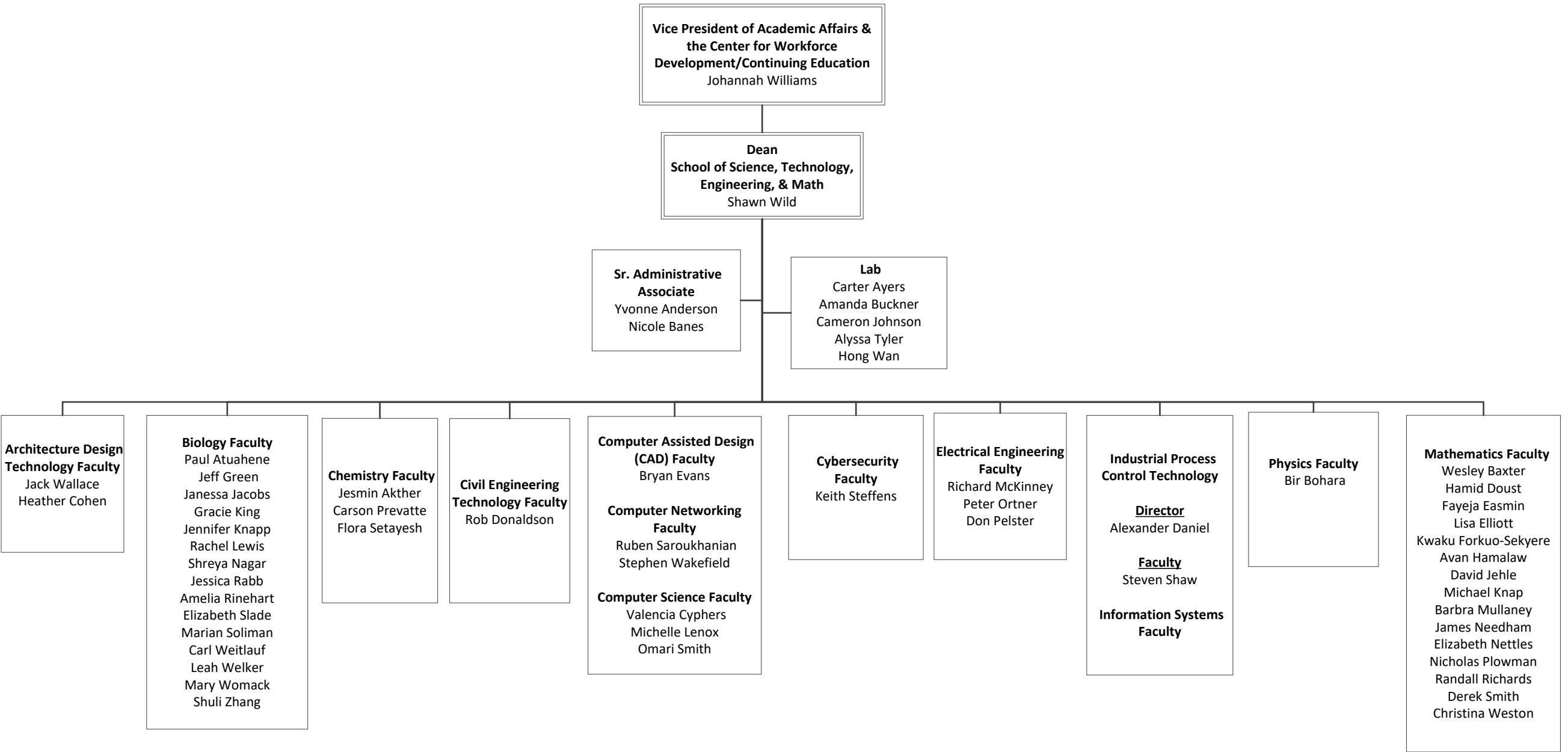
# School of Business and Professional Studies



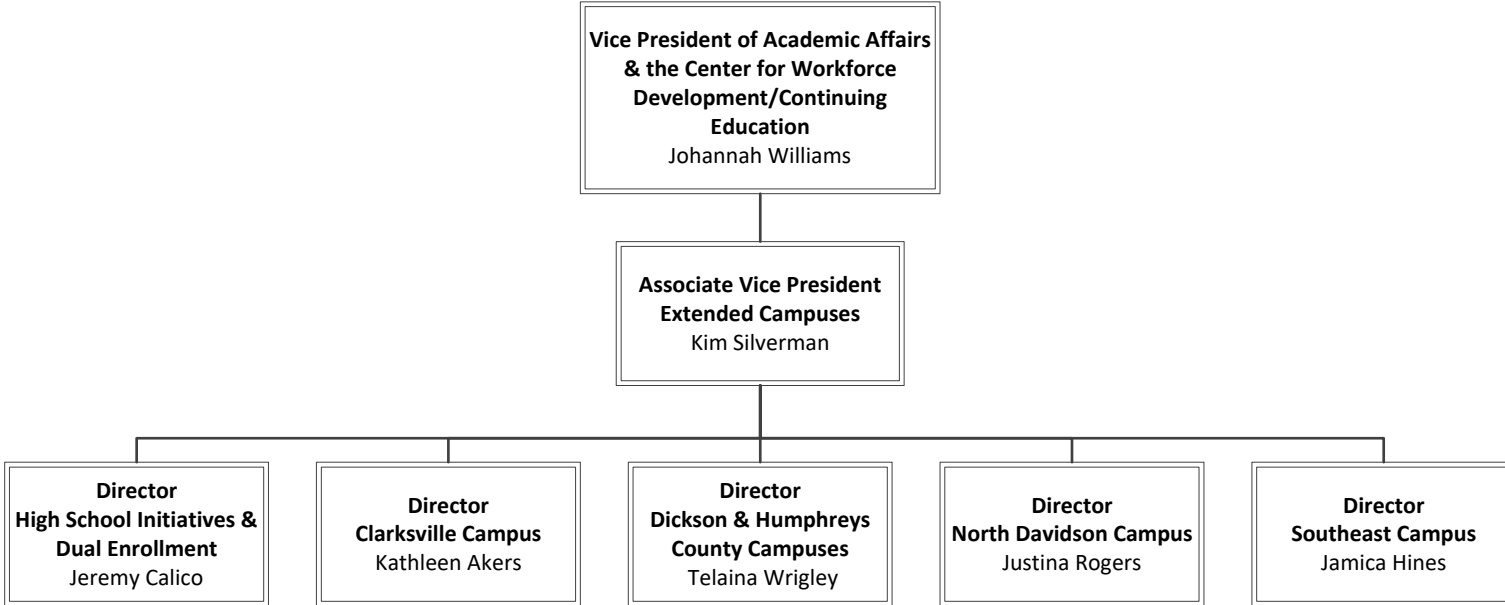
# School of Health Sciences



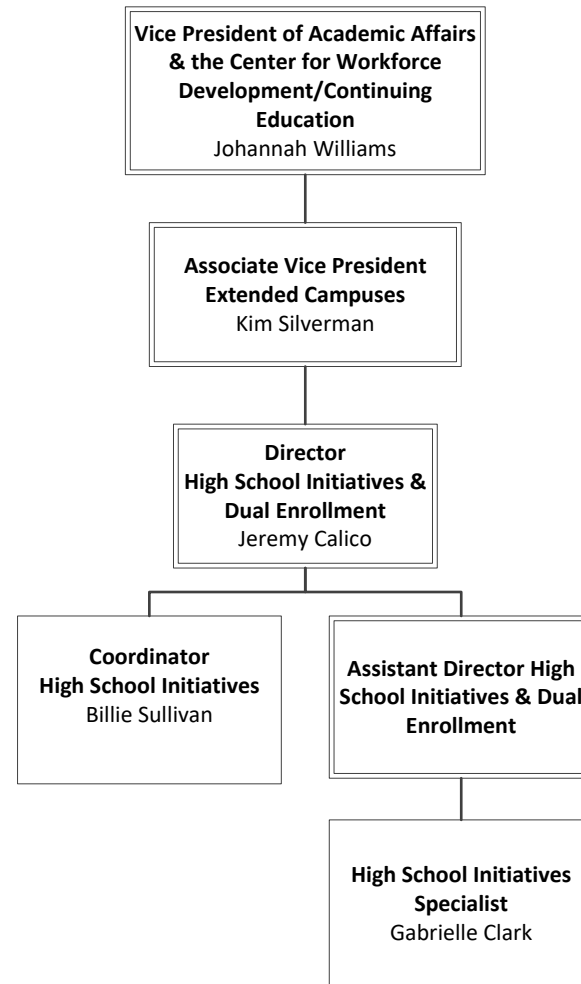
# School of Science, Technology, Engineering, & Mathematics



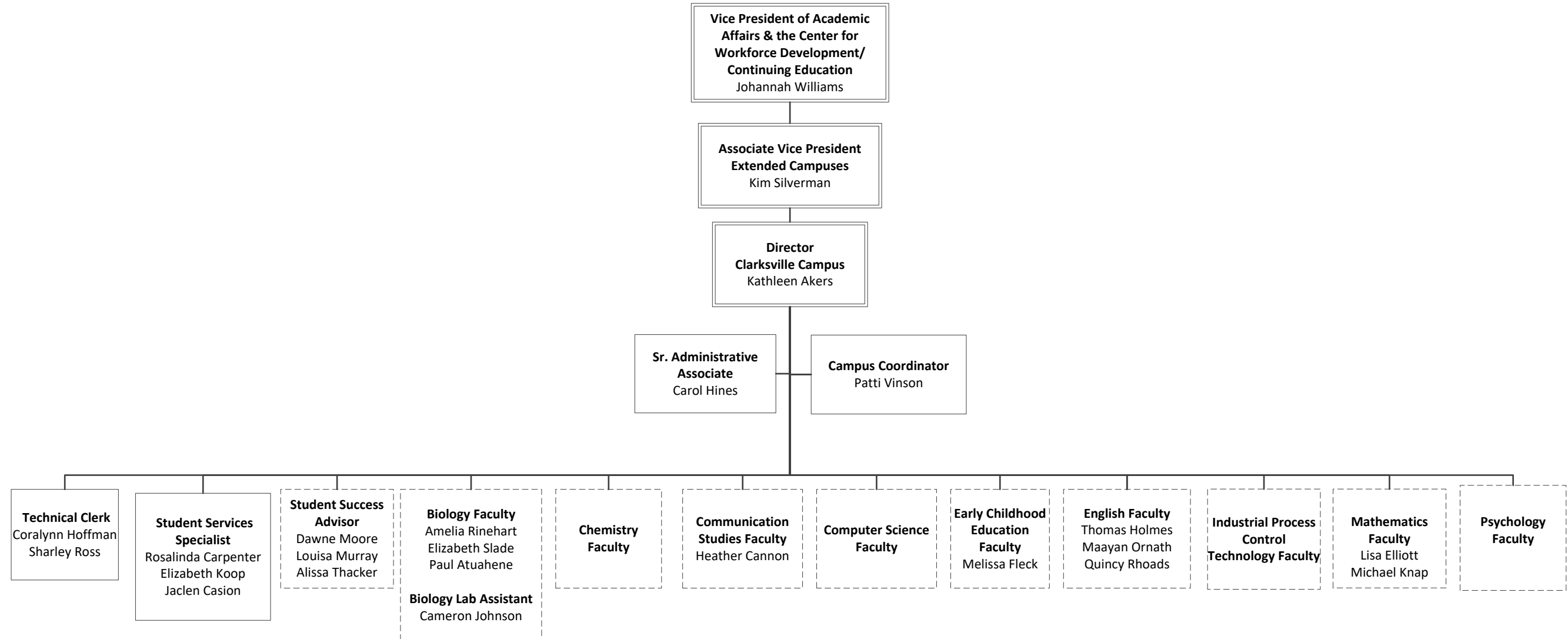
# Office of the Associate Vice President of Extended Campuses



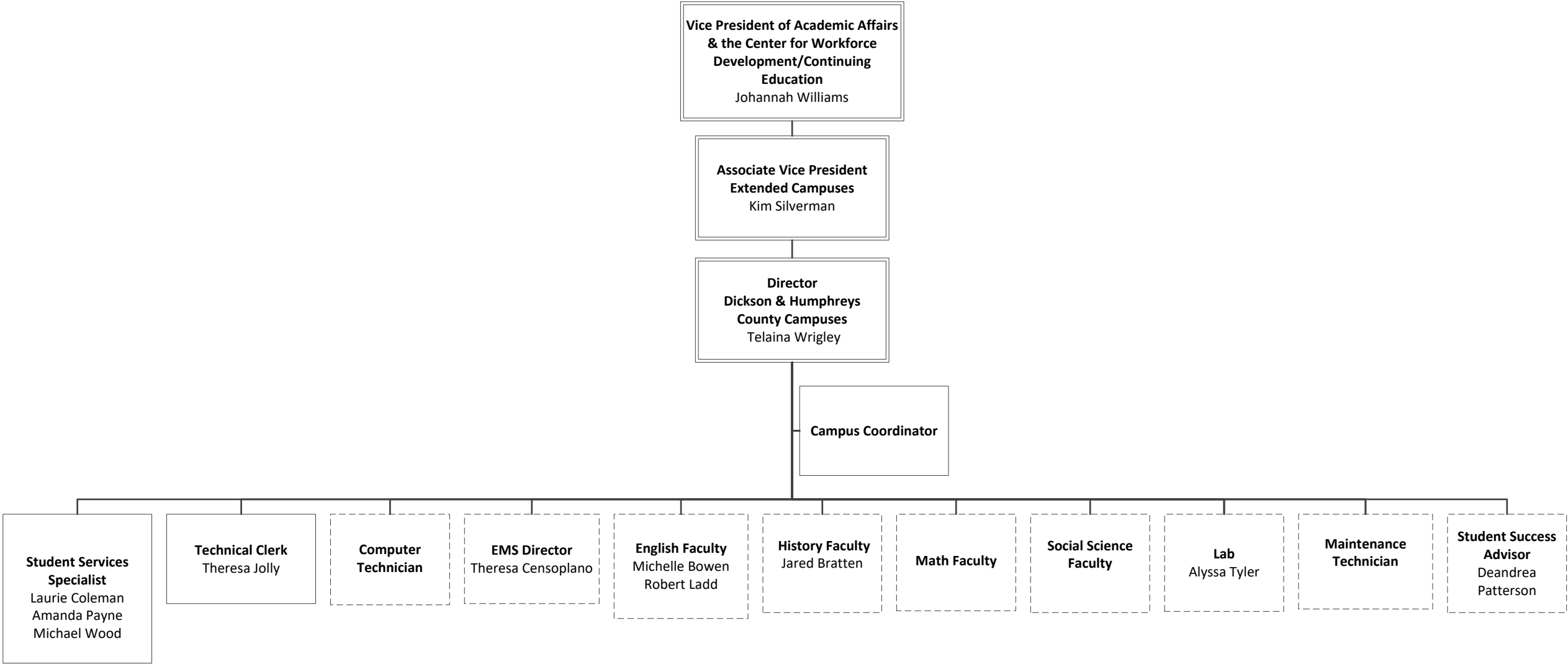
# Office of High School Initiatives & Dual Enrollment



# Clarksville Campus



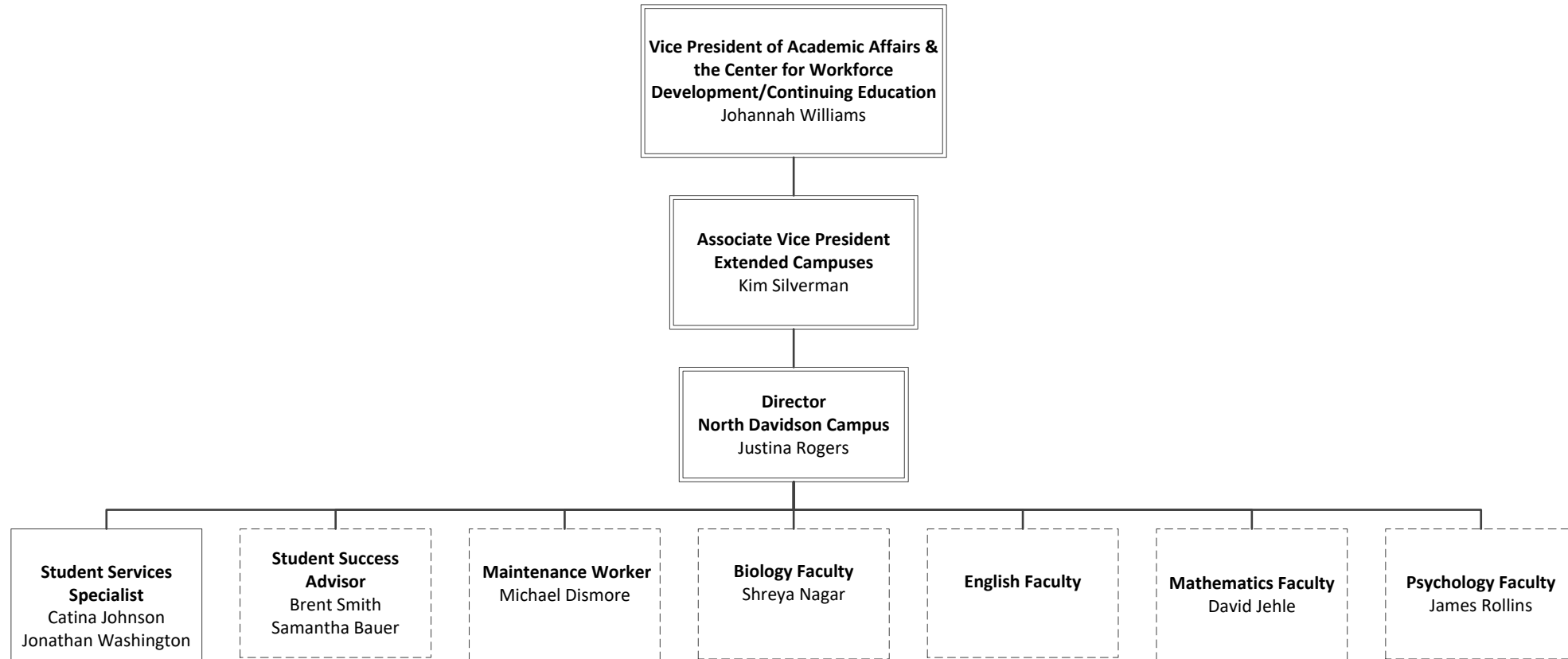
# Dickson Campus



# Humphreys County Campus



# North Davidson Campus



# Southeast Campus

